

STEPHENS BROS 47 FT TWIN SCREW MOTOR YACHT 1929



Specification

ATHENA

STEPHENS BROS 47 FT TWIN SCREW MOTOR YACHT 1929

Designer	Stephens Bros	Length waterline	46 ft 7 in / 14.2 m	Engine	2 x 6 cyl Chrysler Majestic
Builder	Stephens Bros Stockton, CA	Beam	11 ft 6 in / 3.5 m	Location	USA
Date	1929	Draft	3 ft 3 in / 1 m		
Length overall	46 ft 11 in / 14.3 m	Displacement	7.5 Tonnes		
Length deck	46 ft 11 in / 14.3 m	Construction	Cedar planking on oak frames		

These details are provisional and may be amended

Specification

BROKER'S COMMENTS

ATHENA absolutely represents what Stephens Bros did so well – an elegant cruiser; handsome and beautiful at one and the same time evoking 1920s swagger; reefer jackets, starched white shorts, and extravagant yacht club parties. She presents in impressive condition, currently owned by the builder who has restored her and she seems hard to fault.



• SANDEMAN YACHT COMPANY •  
• Brokerage Of Classic & Vintage  
Yachts •

[www.sandemanyachtcompany.co.uk](http://www.sandemanyachtcompany.co.uk)

## STEPHENS BROS 47 FT TWIN SCREW MOTOR YACHT 1929

---

### Specification

#### HISTORY

Stephens Bros hull no. 566

ATHENA was built in 1929 by Stephens Bros of Stockton California - one of the premier yacht builders in the US at that time. She was built for Frank A Cressey Jr, President of the Modesto Gas Company and a member of the St. Francis Yacht Club. Originally named TAPAWINGA, she is a 47 ft Stock Cruiser. Most of her life was spent in Northern California in fresh water and a covered slip. In between her first and present names, she's been DONELLEN, LOST HORIZON, ALOYD, TOI and PENQUIN. ATHENA moved to Southern California in 1994 where she underwent a complete restoration.

The Stephens Brothers boatbuilding firm in Stockton operated from 1902 right up to 1987. Over the years the company became famous for its elegantly designed pleasure craft, including sailboats, speedboats, cruisers

and private yachts, and the company was economically successful even during the Great Depression. Prior to that, East Coast buyers were taking an interest in their new gasoline powered semi-stock cruisers that were smaller and more affordable than the previously built steam yachts. Today, Stephens Bros boats are highly prized as collectors' items and their owners meet every year at the Stephens Rendezvous, organized by the Northern California Fleet of the Classic Yacht Association, to show off these beautiful vessels. A collection of Stephens Bros documents, photographs and original drawings is available to the public in the archives of the Haggin Museum in the brothers' home town of Stockton - and the museum displays a fully restored 1927 26 foot runabout to commemorate the company and its legacy.

### Specification

#### CONSTRUCTION

- Port Orford cedar planking over oak frames; all bronze fastened
- Side and aft decks solid teak planked
- Fore deck, cabin tops; vertical grain Douglas fir, plywood overlay, fibreglass and Urethane paint
- All raised panel teak cabin houses and deck superstructure

### Specification

#### ACCOMMODATION AND DOMESTIC EQUIPMENT

- Pilot house saloon over the main engines
- Upholstered seat
- Doorway and companionway steps down
- Fore cabin
  - 1 x Double berth with drawers under
  - 1 x Single berth with drawers under
  - Dresser and hanging locker
  - En suite head compartment
- Back up and aft through deck house saloon to galley amidships
- Electric hob cooker
- Microwave oven
- Teak worktops & draining board
- Stainless steel sink to port
- Fridge freezer to stbd by steps
- Doorway to aft cabin
- 2 x Double settee berths
- Drawers under berths
- Hanging locker and table
- Head with electric WC

### Specification

#### DECK EQUIPMENT AND GROUND TACKLE

- 110 AC electric anchor windlass
- Danforth anchors and chain
- Anchor davit
- Mast and yard
- Teak accommodation ladder
- Dinghy davits
- Searchlight
- Horn

### Specification

#### MECHANICAL ELECTRICAL AND TANKAGE

- 2 x 6 cylinder Chrysler Majestic petrol / gasoline engines, 160 HP each
- 7 KW Koehler petrol / gasoline generator
- New stainless steel holding tank
- New Hart 110 inverter and all new wiring

- New stainless steel 175 gallon / c 660 litre fuel tank
  - New stainless steel 80 gallon / c 303 litre fresh water tank

- New hot water heater, electric and heat exchange
  - Fresh water pressure pump
  - Water heater
  - Stainless steel holding tank
- 

Specification

NAVIGATION

- Log and depth
- sounder

Specification

SAFETY

- Life jackets and throw ring
  - 2 x Fire extinguishers
- Vapour sensors and smoke alarms

Specification

ACKNOWLEDGMENTS

shipbuildinghistory.com

Disclaimer

These particulars have been prepared from information provided by the vendors and are intended as a general guide. The purchaser should confirm details of concern to them by survey or engineers inspection. The purchaser should also ensure that the purchase contract properly reflects their concerns and specifies details on which they wish to rely.

STEPHENS BROS 47 FT TWIN SCREW MOTOR YACHT 1929

---

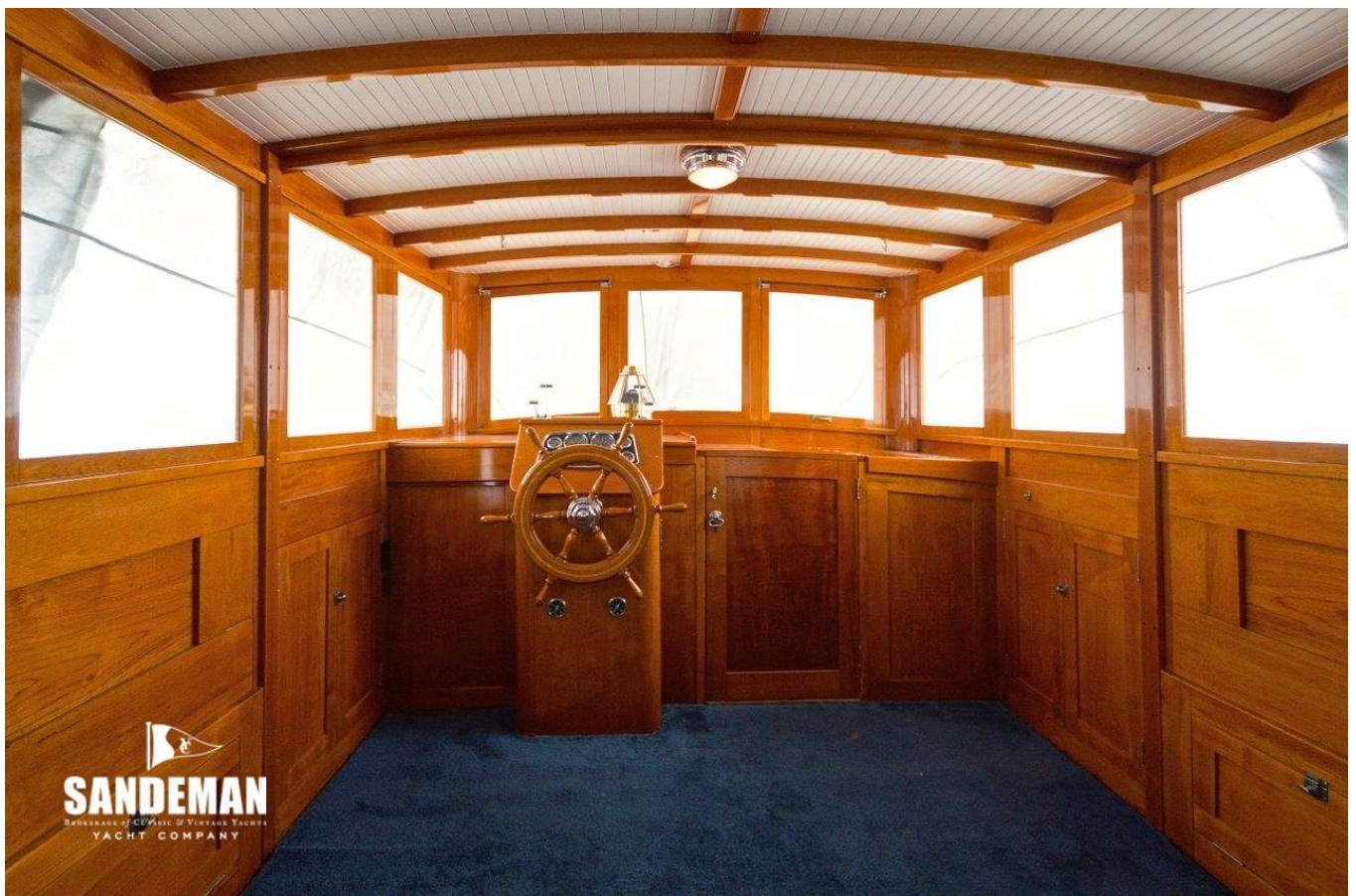
Specification  
GALLERY



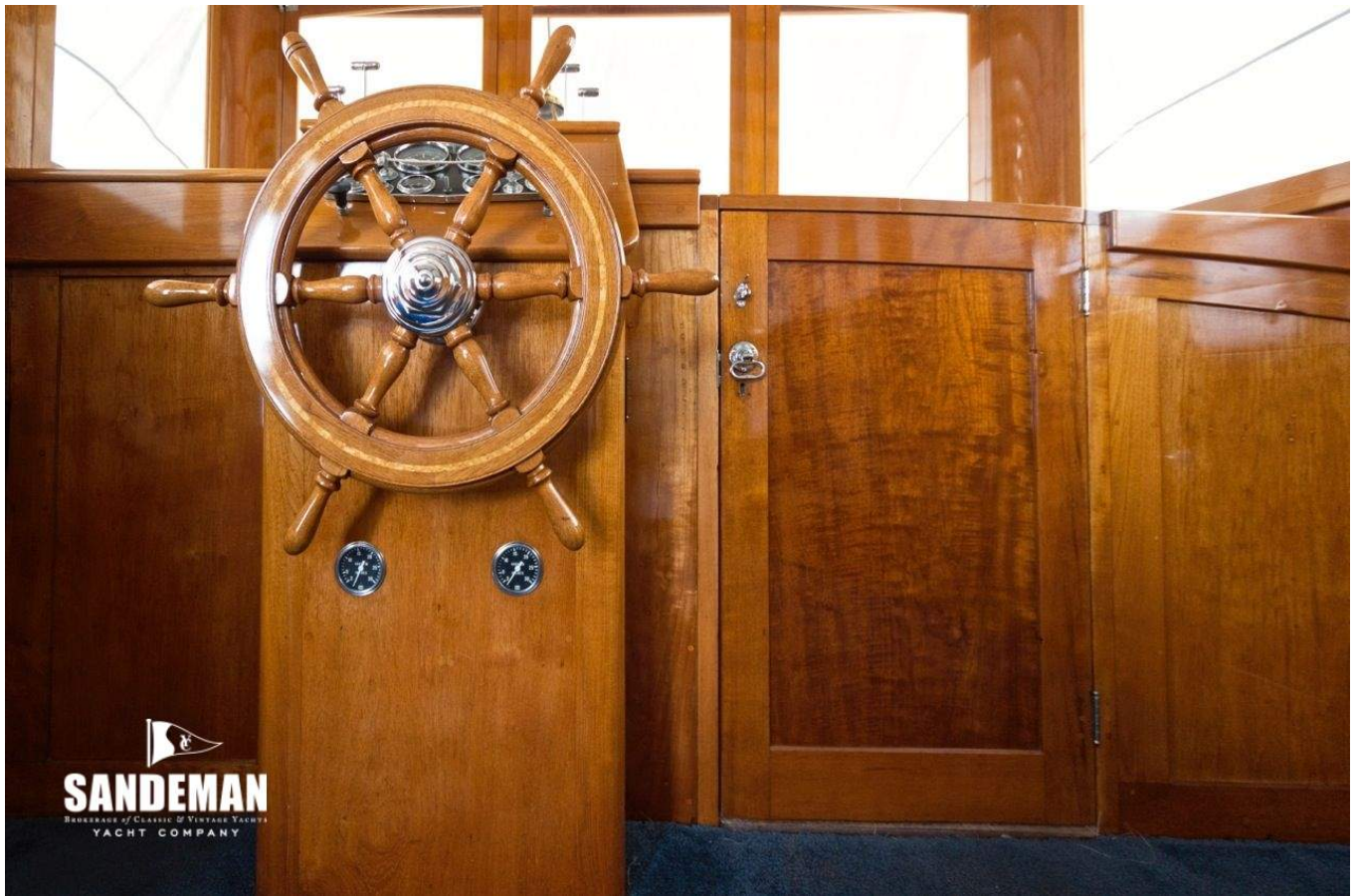




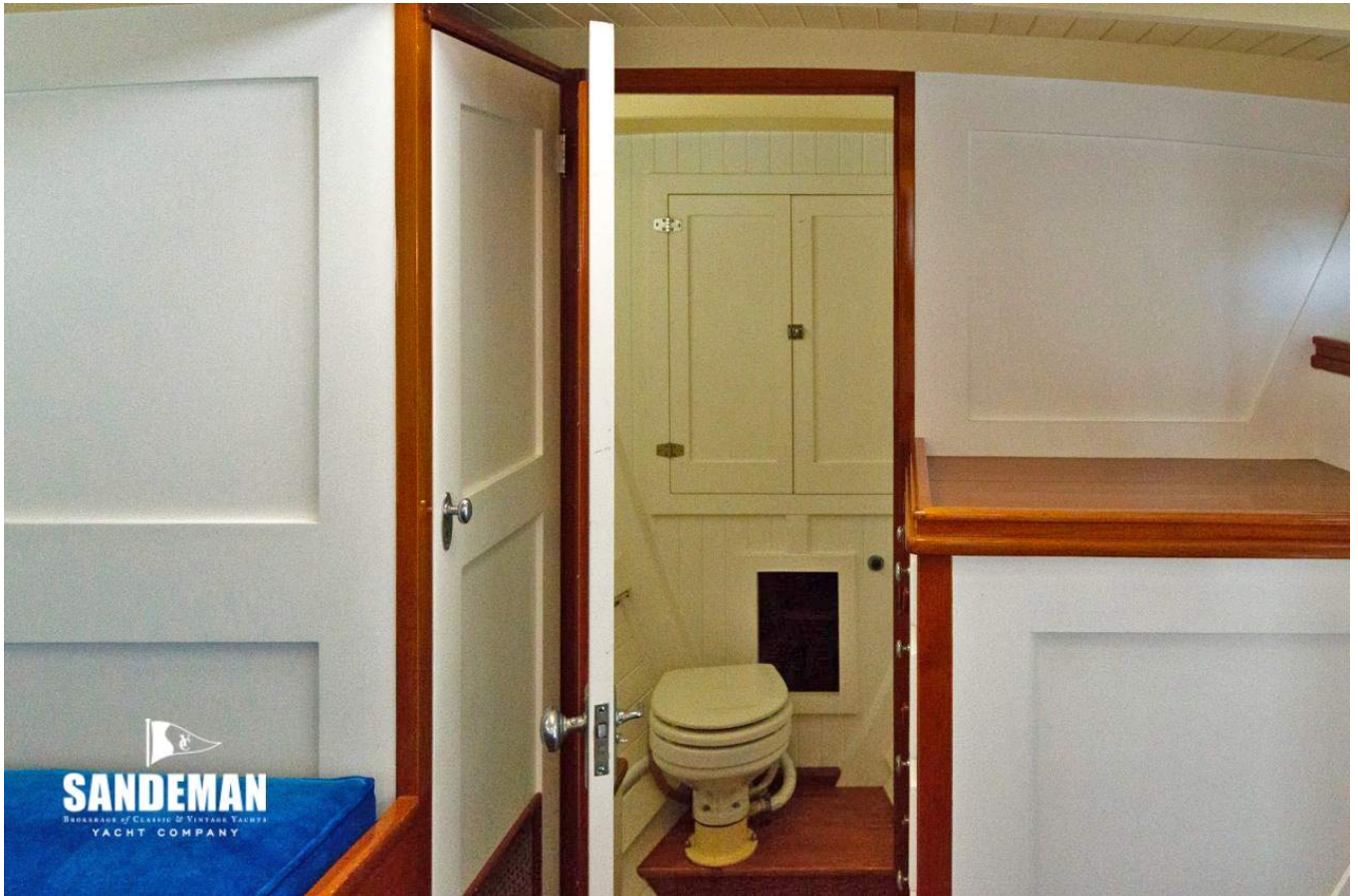








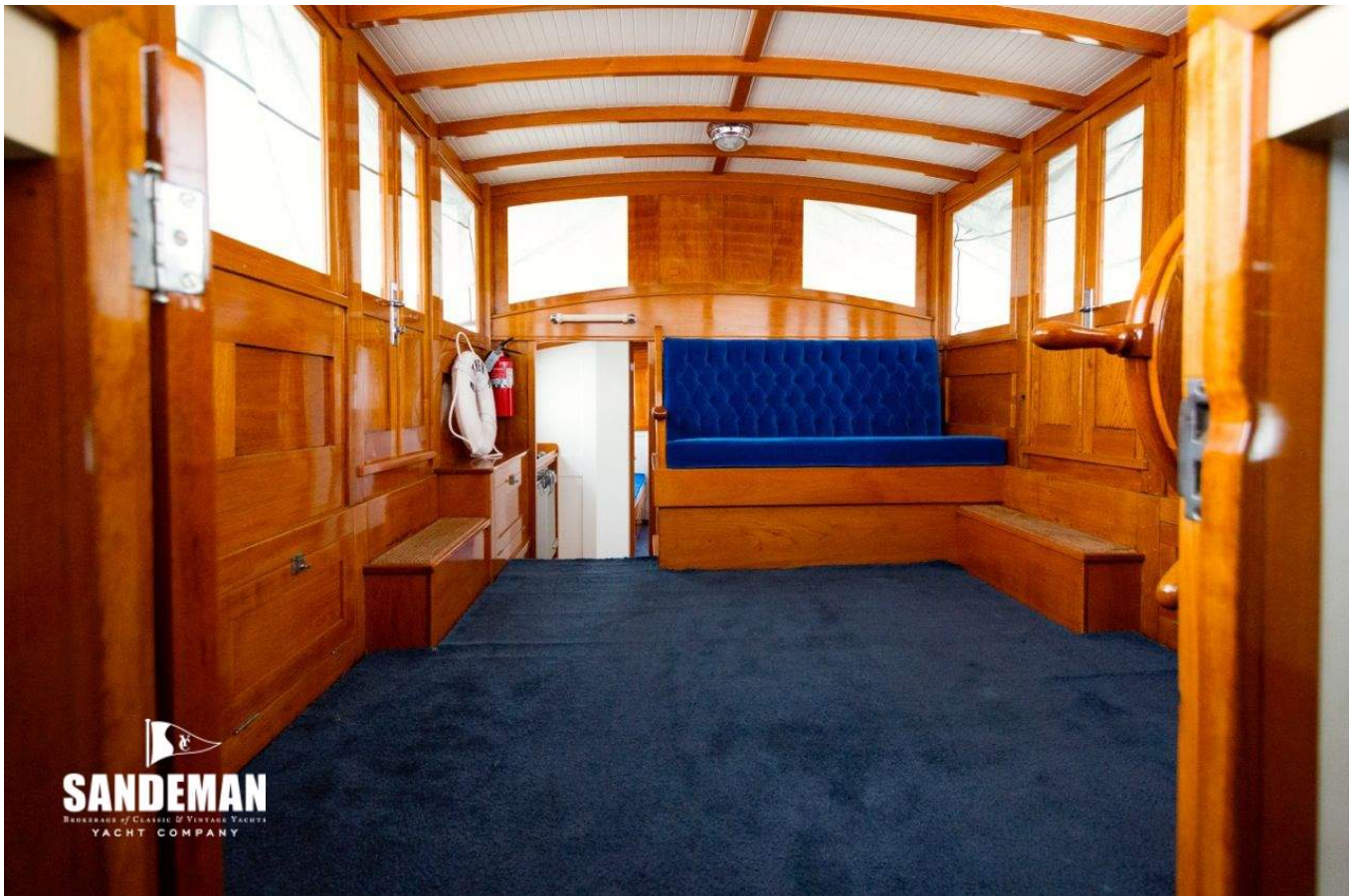












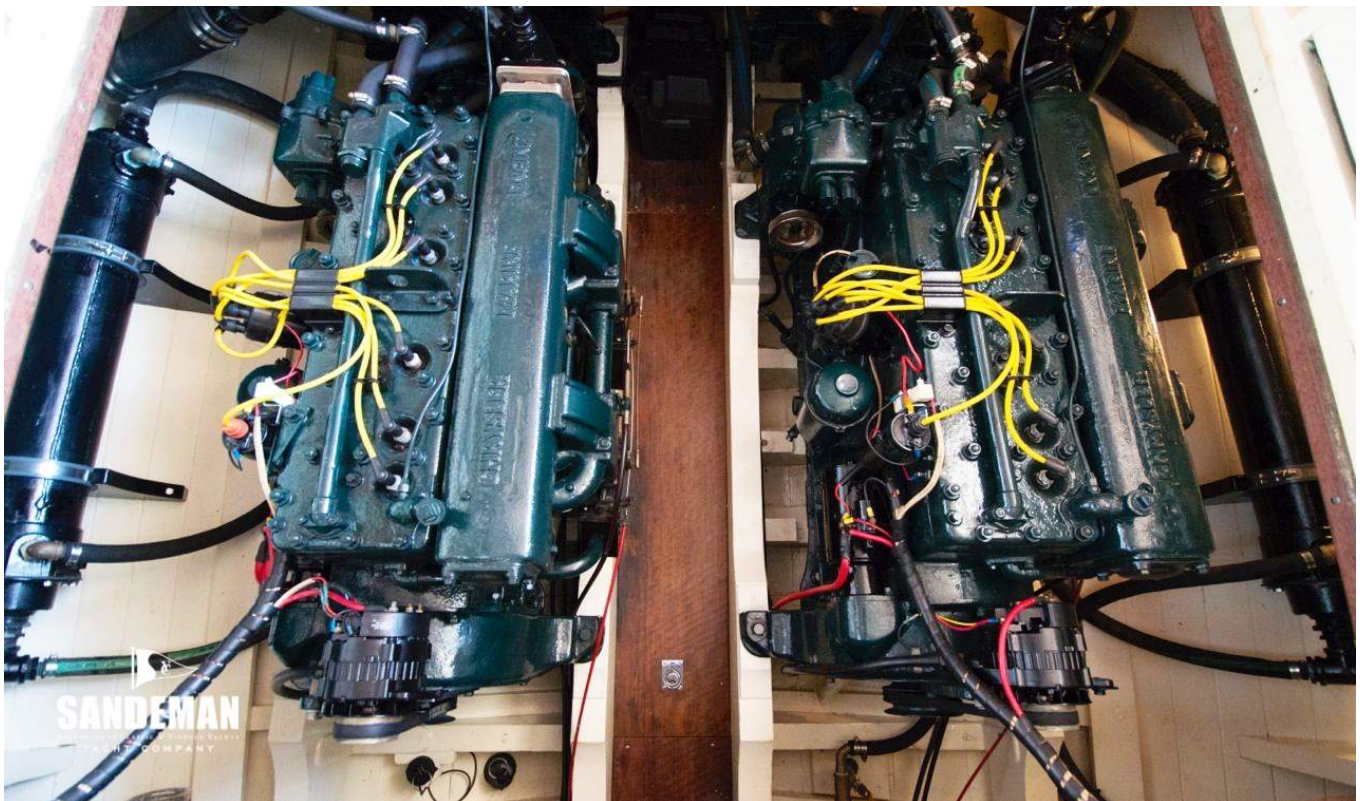




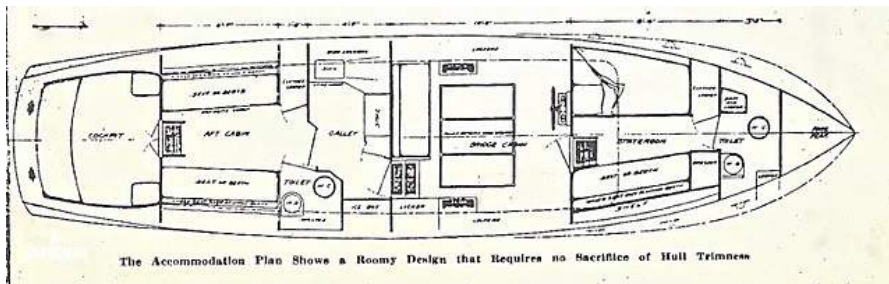
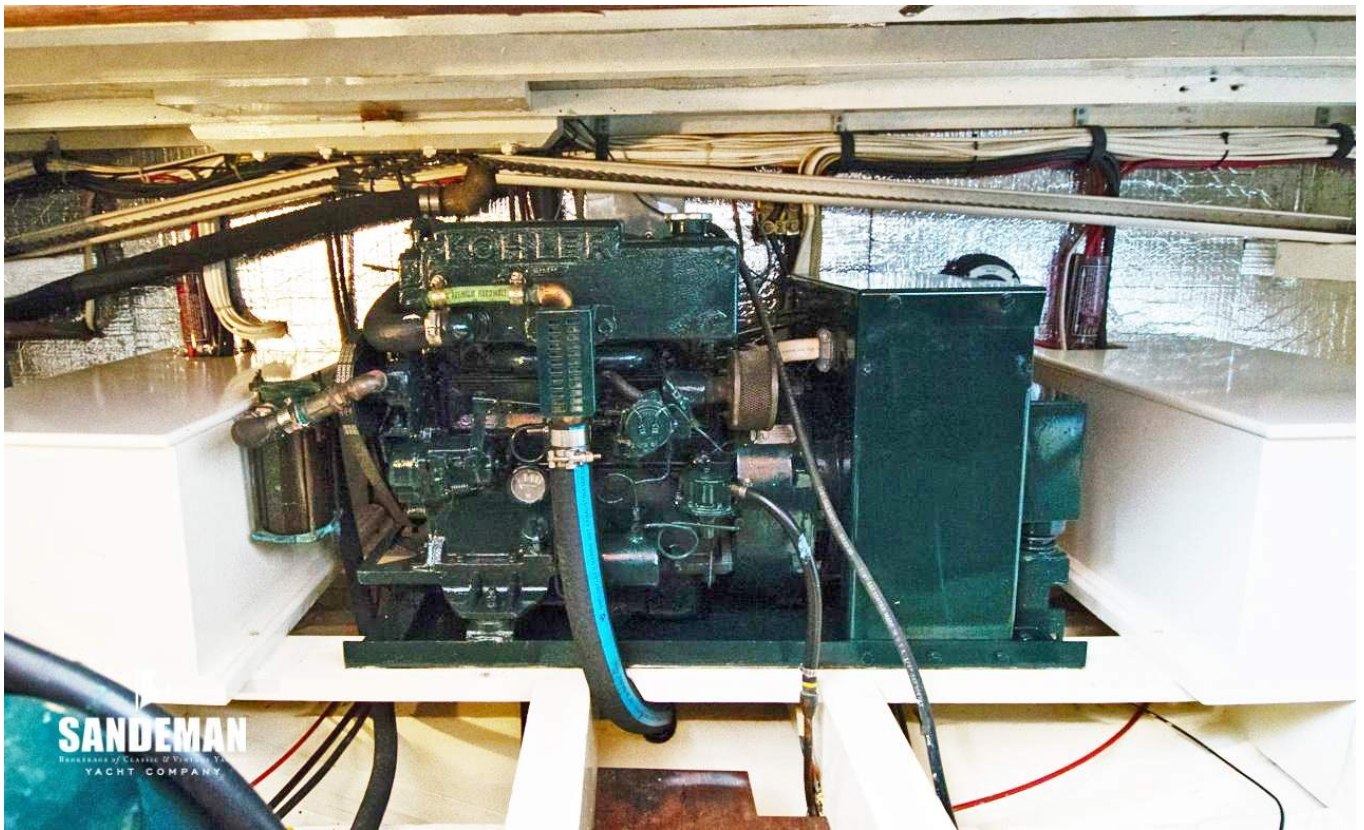












The Accommodation Plan Shows a Roomy Design that Requires no Sacrifice of Hull Trimness

