

ALFRED MYLNE/ WILLIAM FIFE & SON 54 FT CUTTER 1935



Specification

IRINA VII

ALFRED MYLNE/ WILLIAM FIFE & SON 54 FT CUTTER 1935

Designer	Alfred Mylne	Length waterline	37 ft 5 in / 11.4 m	Engine	Lombardini 2204 M 59 HP / 44 kW new 2014
Builder	William Fife & Son, Fairlie	Beam	11 ft 10 in / 3.6 m	Location	France
Date	1935	Draft	6 ft 11 in / 2.1 m	Price	EUR 625,000
Length overall	54 ft 2 in / 16.5 m	Displacement	20 Tonnes		
Length deck	54 ft 2 in / 16.5 m	Construction	Composite		

These details are provisional and may be amended

Specification

BROKER'S COMMENTS

This beautiful Alfred Mylne designed Fife yard built cutter is pedigree indeed. At 54 ft with a Marconi rig to the original plans, she also has enough accommodation to cruise in comfort. IRINA VII seems to hit a sweet spot among vintage yachts; striking - indeed memorable whether seen under sail or alongside showing her characteristic Mylne forward sloping doghouse set in wide uncluttered decks. Both cruising and racing she is a yacht for the connoisseur most certainly.



• SANDEMAN YACHT COMPANY •
• Brokerage Of Classic & Vintage
Yachts •

www.sandemanyachtcompany.co.uk

ALFRED MYLNE/ WILLIAM FIFE & SON 54 FT CUTTER 1935

Specification

RESTORATION 2002-2003

A major refit supervised by renowned, Eugène Cornu-trained naval architect Georges Auzépy-Brenneux took place during the years 2002 - 2003

in which the IRINA VII was virtually completely rebuilt. She was also reconverted from ketch rig back to her original cutter rig.

Specification

HISTORY

IRINA VII was launched in 1935 under the name SONAS - meaning happiness in Gaelic - for her first owner Major J.G. Allan DSO of Helensburgh to Alfred Mylne's design No 366 and was build number 811 at the Fairlie yard of William Fife & Son. By 1947, SONAS was in the ownership of James C. Guthrie and then sold five years later to Norwegian George Von Erpecom of the Bergen Yacht Club, who changed her name to IRINA VII. He by the way had previously owned six other yachts he'd named IRINA. In the 1960s, IRINA VII was entrusted to new owner Finn Engelsen.

From 1965 to 1985 IRINA VII was based in Devon and became effectively a founder member yacht of Island Cruising Club Salcombe. In 1985, she was bought by Mr and Mrs Potts who undertook major maintenance work and changed the rig and some fittings.

In 2002, IRINA VII was bought by her current French owner to be renovated at the Amebois shipyard in Toulouse. The restoration was substantial and took more than 16,000 hours. She is now restored also to her original Marconi cutter rig and the interior according pretty well to the original 1934 arrangement, but with more modern comforts.

Since 2003, IRINA VII has been a regular participant on the Mediterranean regatta circuit. Among other events, in 2005 she won her class in the Trophée Bailli de Suffren (Saint-Tropez to Malta). She also won the CIM Cup for her sporting spirit and grace in the Vele d'Epoca Imperia 2008.

Specification

CONSTRUCTION

- Carvel pitch pine planking on composite iron and oak frames
- 14 mm teak deck planking over double 9 mm layer cross-planked sub deck

- Teak deck beams
 - Teak superstructure and deck furniture
 - Varnished mahogany interior joinery
-

Specification

DECK LAYOUT EQUIPMENT AND GROUND TACKLE

- From aft
- Varnished queen plank, coverboard and toe rail
 - Chromed fairleads on taffrail
 - Raw teak and chromed mooring / main sheet cleats each side
 - 2 x Chromed sheaves inside toerail each side for running backstay
 - Tiller with chromed boss
 - Cockpit coaming tapers up from tiller
 - 2 x Chromed mushroom vents
 - 2 x Varnished teak lazarette hatches
 - Seating both sides of cockpit at deck level
 - 2 x Anderson 52 ST primary winches on stainless steel pedestals outboard
 - 2 x Anderson 46 ST secondary winches on stainless steel pedestals outboard
 - 2 x Chromed opening ports in each cockpit side to aft cabin and quarter berth
 - Engine control
 - Steering compass in brass binnacle on high teak mount

- Classic Mylne forward sloping doghouse with glazed windows aft, to sides and fwd
 - Door opening offset to stbd and sliding hatch in coach roof fwd
 - Raw teak and chromed cleats each side inboard fwd on deck
 - Lemon squeezer deck lights each side
 - Raw teak and chromed cleats each side outboard fwd mid deck
 - Raised hatch with sliding roof fwd
 - Butterfly skylight fwd
 - Mast with twin spreaders
 - 2 x Lewmar 43 halyard winches at base
 - Anderson 46 halyard winch at base
 - Butterfly hatch fwd of mast
 - Raised hatch with sliding roof over fore cabin
 - Inner forestay
 - Muir windlass
 - 60 lb CQR anchor
 - Raw teak and chromed mooring cleats each side
 - Stainless steel Sampson post
-

Specification

ACCOMMODATION AND DOMESTIC EQUIPMENT

IRINA VII can accommodate 6 people; 2 singles and 1 double in 3 cabins with 2 shower / head compartments. The interior broadly conforms with the 1934 layout and in varnished mahogany with oak cabin sole and white painted deck head maintaining the period character of the yacht.

The main access is via doorway and sliding hatch in the doghouse and companionway steps down

- Chart table and navigation instruments to port, clock and barometer forward
- Ships isolator panel
- 4 x Steps down to cabin sole

Guest cabin to port

- Large single berth
- Stowage lockers under
- Shelving
- Port light and reading light

Single quarter berth to stbd

- Shelf
- Port light
- Reading light

Galley forward to stbd

- Taylor 2 burner hob and oven
- Stainless steel sink, draining board and surround
- Hot and cold mixer tap
- Plate racks and lockers
- Fridge in bulkhead

Head / shower compartment opposite to port

- Manual WC
- Vintage fold down hand wash basin
- Lemon squeezer light in deckhead

Saloon forward

- Settee berths each side in deep red upholstery
- Shelving and lockers above and outboard, to sides fore and aft
- Drop leaf dining table on centreline
- 2 x Portlights
- 4 x Deck head lights
- 2 x Reading lights
- 2 x Period paraffin lamps

Double cabin to port

- Desk and lockers
- Stowage under berth
- Small butterfly hatch over
- Bulkhead and reading light

- 2nd Head / shower compartment

- Wash basin Lockers

Forecabin

- 2 x Single Vee berths with stowage under
- Dropdown vintage hand wsh basin forward
- Steps up to raised hatch in deckhead
- Deckhead and reading lights

Coming aft through saloon

- Companionway steps to raised mid deck hatch
- Doorway to day head/ shower
- Manual WC
- Wash basin

Specification

RIG, SPARS AND SAILS

Marconi cutter rig

- Oregon pine mast and boom and spinnaker pole (2003)
- Stainless steel standing rigging

Sails by Vega Voiles new in 2014

- Main sail 947 sq ft / 88 m²

- Genaker 1,400 sq ft / 130m²

- Spinnaker 2,368 sq ft / 220m²

- Genoa 398 sq ft / 37m²

- Jib 280 sq ft / 26m²

- Staysail 226 sq ft / 21m²

Specification

MECHANICAL ELECTRICAL AND TANKAGE

- Lombardini 2204 M 59 HP / 45 kW Diesel engine new 2014

- Maxprop 4 bladed propeller

- DC and AC electrical system renewed 2014

- Victron batteries new 2015

- Electric immersion water heater

- Vetus 44 gallon / 200 Litre fuel tank

- Stainless steel fresh water tanks total 88 gallons / 400 litres

- Camping Gaz bottles

Specification

NAVIGATION, COMMUNICATIONS AND ELECTRONICS

- Sestrel steering compass

- Garmin 152 H GPS

- Icom VHF

- B&G Hydra 2

Specification

SAFETY

- Life raft
- Fire extinguishers

- 4 x Bilge pumps

Disclaimer

These particulars have been prepared from information provided by the vendors and are intended as a general guide. The purchaser should confirm details of concern to them by survey or engineers inspection. The purchaser should also ensure that the purchase contract properly reflects their concerns and specifies details on which they wish to rely.

ALFRED MYLNE/ WILLIAM FIFE & SON 54 FT CUTTER 1935

[Specification](#)
GALLERY























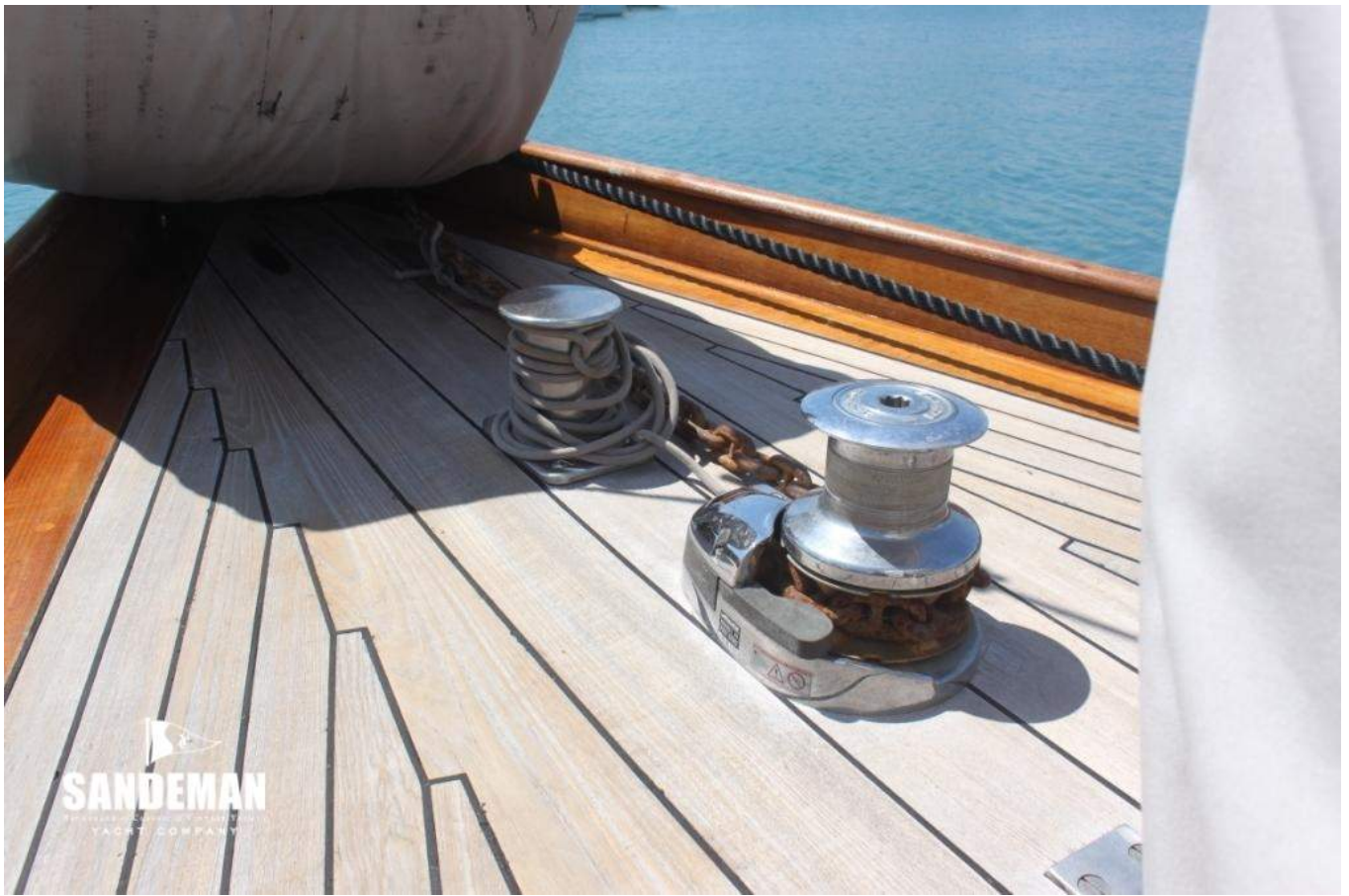


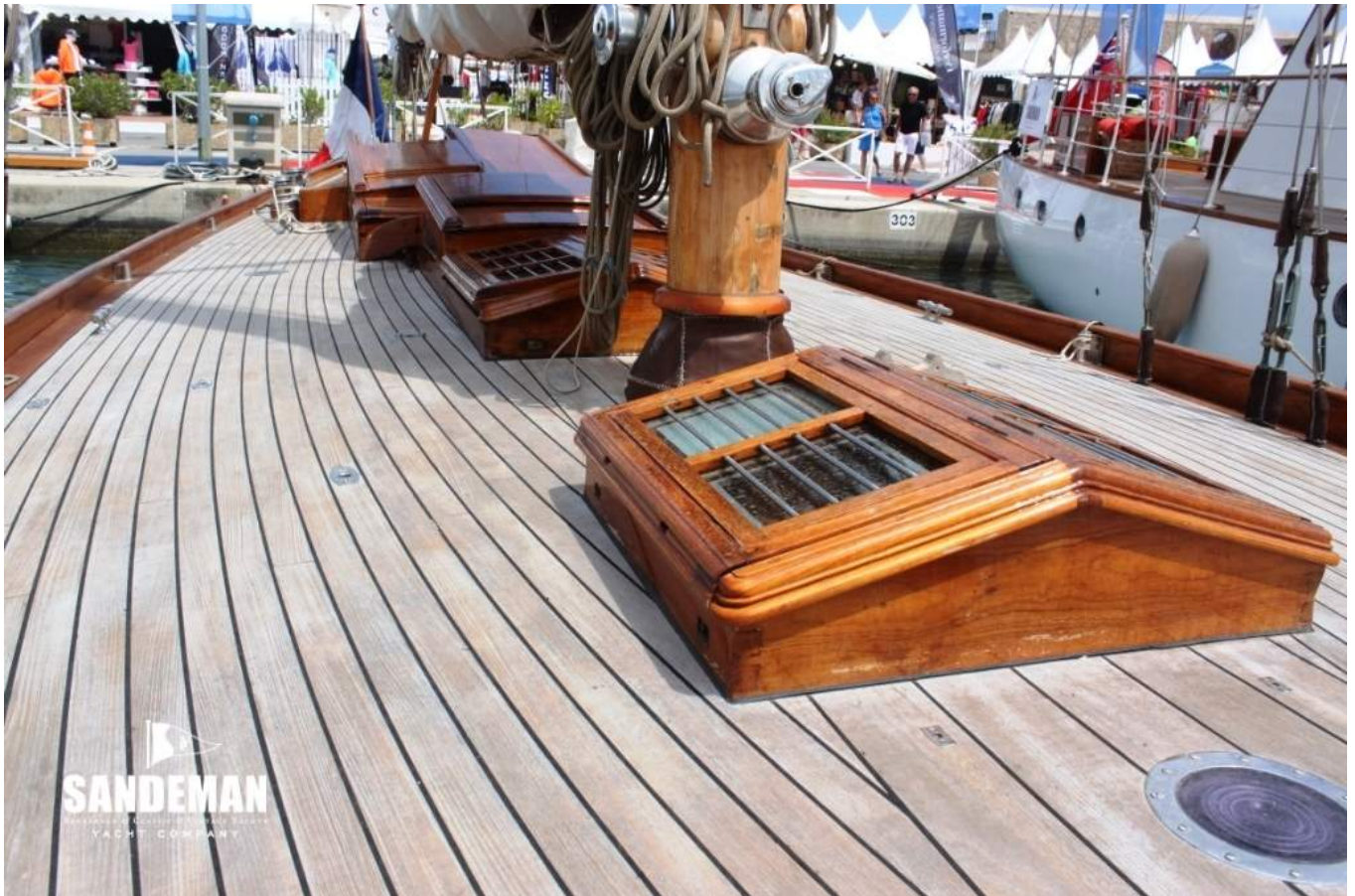


























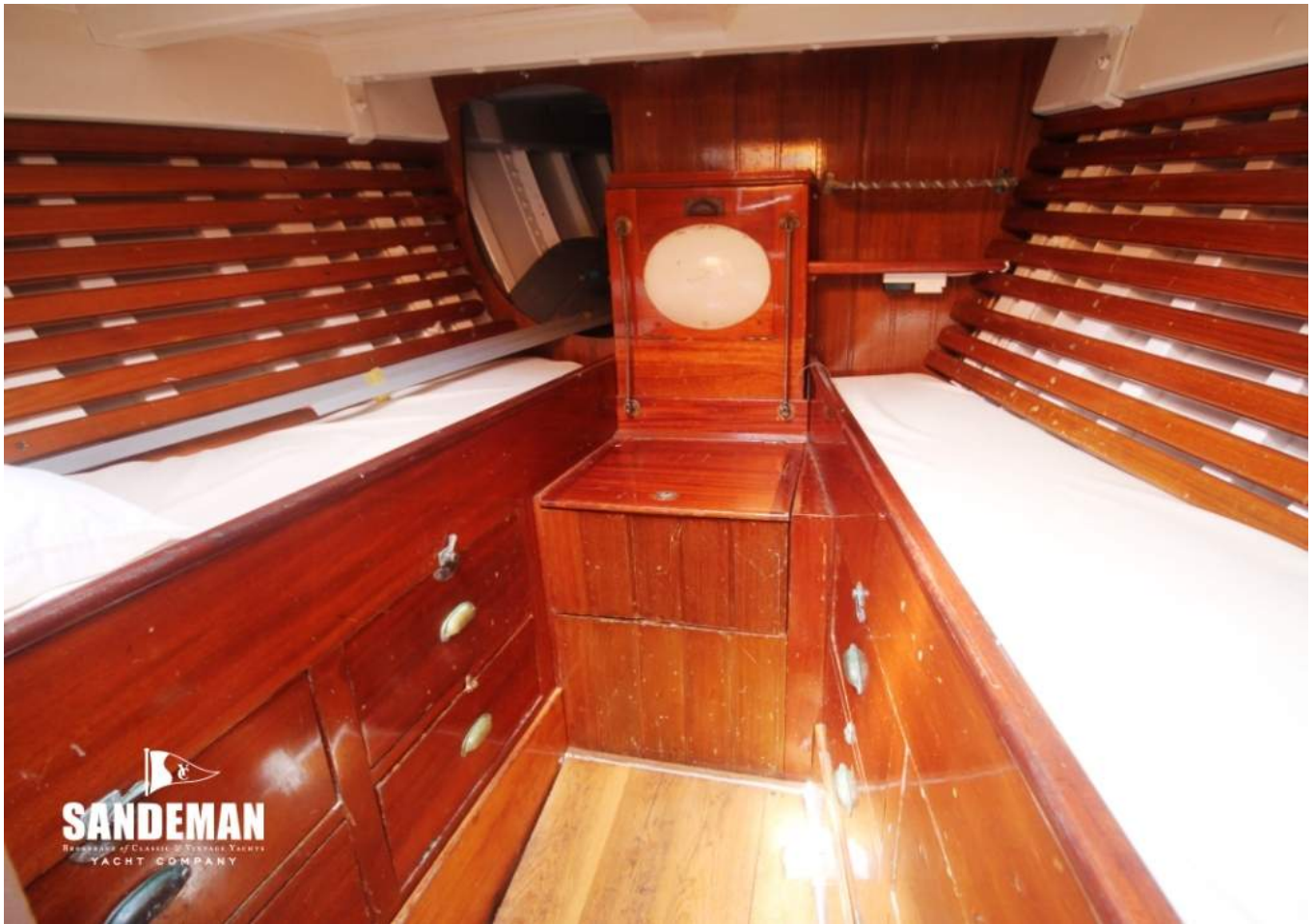












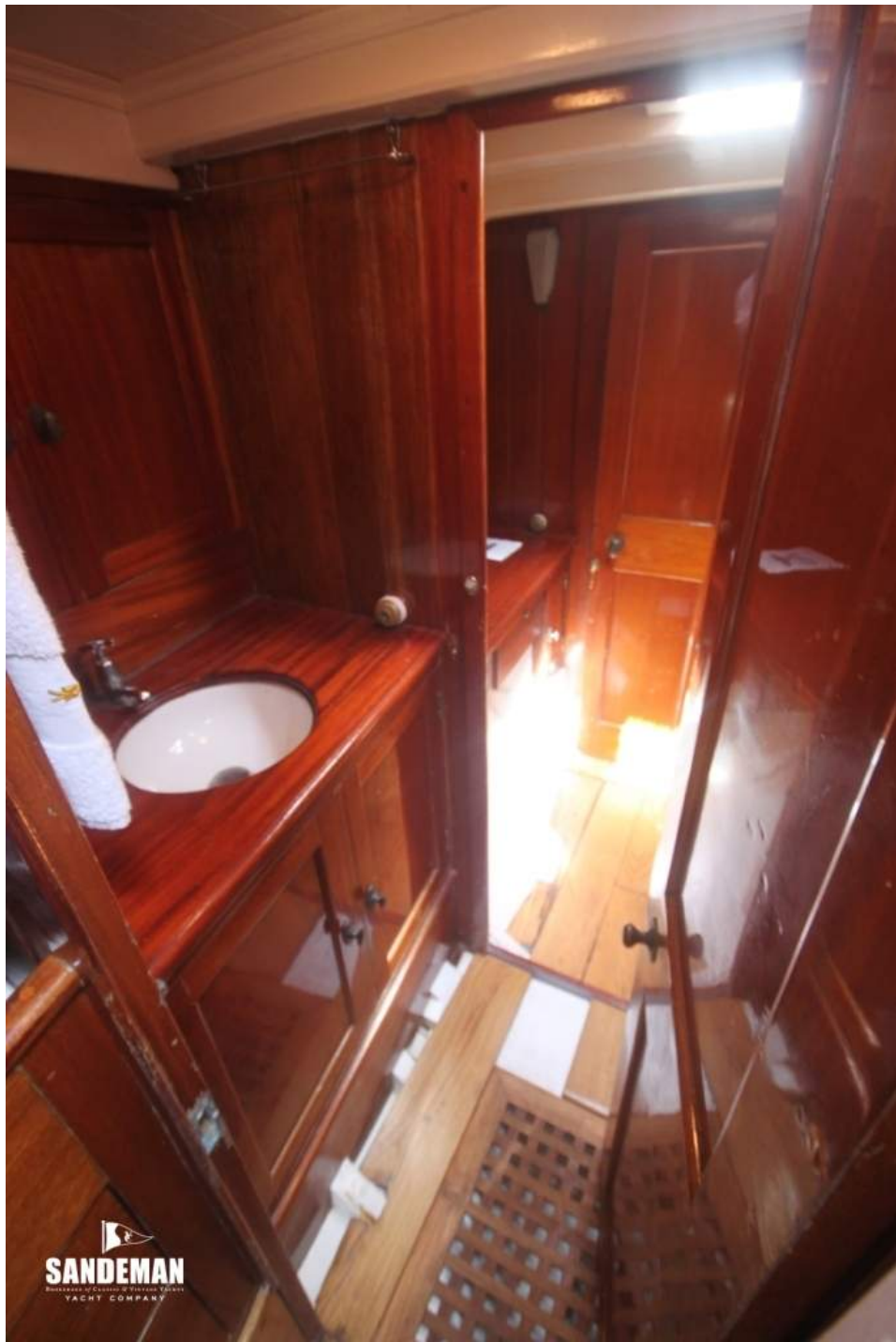





SANDEMAN
BROKERAGE OF CLASSIC & VINTAGE YACHTS
YACHT COMPANY




SANDEMAN
BROKERAGE OF CLASSIC & VINTAGE YACHTS
YACHT COMPANY






SANDEMAN
HANDMADE BY CLASSIC & VINTAGE YACHTS
YACHT COMPANY

