

SPARKMAN & STEPHENS 12 METRE SLOOP 1938 - SOLD



Specification

NORTHERN LIGHT

SPARKMAN & STEPHENS 12 METRE SLOOP 1938

Designer	Sparkman & Stephens	Length waterline	44 ft 11 in / 13.7 m	Engine	Westerbeke 55D-four 2003
Builder	Henry B Nevins Inc City Is NY	Beam	11 ft 10 in / 3.6 m	Location	USA
Date	1938	Draft	8 ft 10 in / 2.7 m	Price	Sold
Length overall	70 ft 3 in / 21.4 m	Displacement	27.6 Tonnes		
Length deck	70 ft 3 in / 21.4 m	Construction	Mahogany over cedar planking		

These details are provisional and may be amended

Specification

BROKER'S COMMENTS

NORTHERN LIGHT's pedigree is hard to question – a pre war 12 Metre from the board of Sparkman & Stephens and built by Nevins; her beauty is effortless and so is her charm. She has all the power of a 12 but is somehow less brutal than the later boats yet arguably just as potent. She has been a survivor throughout her 77 years but most dramatically when she was rescued from the bottom of a lake in Michigan in 1984. She spent 2 winters there being put back together before being sailed to Newport in 1986. She is USCG certified for 13 passengers and 3 crew. Realistic offers will be properly considered. Meanwhile lying at Newport Rhode Island, she is well placed for the 2019 12 m World Championship.



• SANDEMAN YACHT COMPANY •
• Brokerage Of Classic & Vintage
Yachts •

www.sandemanyachtcompany.co.uk

SPARKMAN & STEPHENS 12 METRE SLOOP 1938

Specification

HISTORY

NORTHERN LIGHT was built in 1938 as a 24th birthday present to Alfred Lee Loomis Jr. from his father as enticement to keep his young son from going on his grand tour to Europe. Later under the ownership of the Greek shipping tycoon, Stavros Niarchos, as NEREUS she was involved in the America's Cup in 1958 for the defender COLUMBIA and then again in 1962 and 1964. After her cup service, she ended up in Pentwater, Michigan and participated in local racing including the famous Chicago - Mackinac Race. In 1984, her owner fell into arrears with his boatyard payments; the boatyard taking ownership, then for a lake surge to occur impaling NORTHERN LIGHT on a piling and sinking her.

The late Bob Tiedemann purchased her in a blind bidding offer to the boatyard. After spending 2 winters in Michigan replacing the steel floors with bronze, rebuilding the rudder, scarfing 16 ft of Sitka spruce on her original mast and replacing some bottom planking and painting topsides and bottom, she was re launched. In 1986 Bob and crew brought her back to the east coast to Newport, RI, where she has been offering private charters since.

NORTHERN LIGHT's original interior had been removed during the late 1970s. Her current configuration is open with a navigation area, galley, cushioned settees and a private head; ideal for chartering and racing. She is very competitive and has won several regattas including the Classic Yacht regatta held annually in Newport, RI and her class in the Edgartown Yacht Club 12-metre regatta. NORTHERN LIGHT was placed tenth in the Classic Division in 2001 in Cowes during the World Championships and second in the Vintage division in 2009 in Newport RI.

The bow of NORTHERN LIGHT is clearly visible while chasing GLEAM in the famous black and white Rosenfeld image "Flying Spinnakers" taken in the late 1930's in Long Island Sound, New York.

The owner has two volumes of scrapbooks and the original set of blue prints.

Specification

CONSTRUCTION

- Carvel double planked mahogany and cedar on white

oak frame with silicon bronze fastenings

Specification

ACCOMMODATION AND DOMESTIC EQUIPMENT

- Open layout with double berth port side in aft section

- 2 x settee berths on port and starboard

- Navigation seating/desk area starboard side

- Head to starboard with Skipper WC

- Galley on port side with sink, stove, reach in ice box and cabinetry

- Forward open for storage

Specification

RIG, SPARS AND SAILS

- Spruce mast and boom

- 4 x Jibs with covers; #1, #2, #3 and #4 all off white with smaller cut panels

- Wooden spinnaker pole

- 6 x Spinnakers of various configurations

- Stainless flat rod and stainless standing rigging

- Navy chute; fairly new

- Hood main sail with cover in off white with smaller cut panels

Specification

DECK LAYOUT EQUIPMENT AND GROUND TACKLE

- Anchors and chain

original bronze by Henry B. Nevins

- All winches are the

Specification

MECHANICAL ELECTRICAL AND TANKAGE

- Westerbeke 55D-four 2003

- 30-40 US Gallon fuel tank

- Offset feathering propeller

- 20 US Gallon fresh water tank

- 12 V Electronics

- 15 US Gallon holding tank

- Pumped fresh water

Specification

NAVIGATION, COMMUNICATIONS AND ELECTRONICS

- Magnetic steering compass

- GPS

- VHF radio

Specification

SAFETY

- Fixed fire system in engine space

- 16 adult PFDs and 2 child PFD's

- 10 to 12 person flotation life raft

- 2 man overboard life rings

Specification

RESTORATION AND REFIT

1984 -1986

- Robert Tiedemann purchased NORTHERN LIGHT in her sunken condition and raised her

- Removed the mast and stabilized her on land

- Replaced the steel floors with bronze

- Re planked areas of the hull bottom

- Rebuilt the rudder.

1999

- Modified ring frames installed

2002

- Forward section each side of the hull bottom refastened with bronze fastenings

2003

- Bottom refastening completed

2013

- Rudder post area rebuilt

- New gudgeon shoe cast and installed

- Rudder stripped and faired

2017

- Some topside planks replaced in addition to two hundred fasteners

- Topsides faired and primed for painting this year

Disclaimer

These particulars have been prepared from information provided by the vendors and are intended as a general guide. The purchaser should confirm details of concern to them by survey or engineers inspection. The purchaser should also ensure that the purchase contract properly reflects their concerns and specifies details on which they wish to rely.

SPARKMAN & STEPHENS 12 METRE SLOOP 1938

Specification
GALLERY

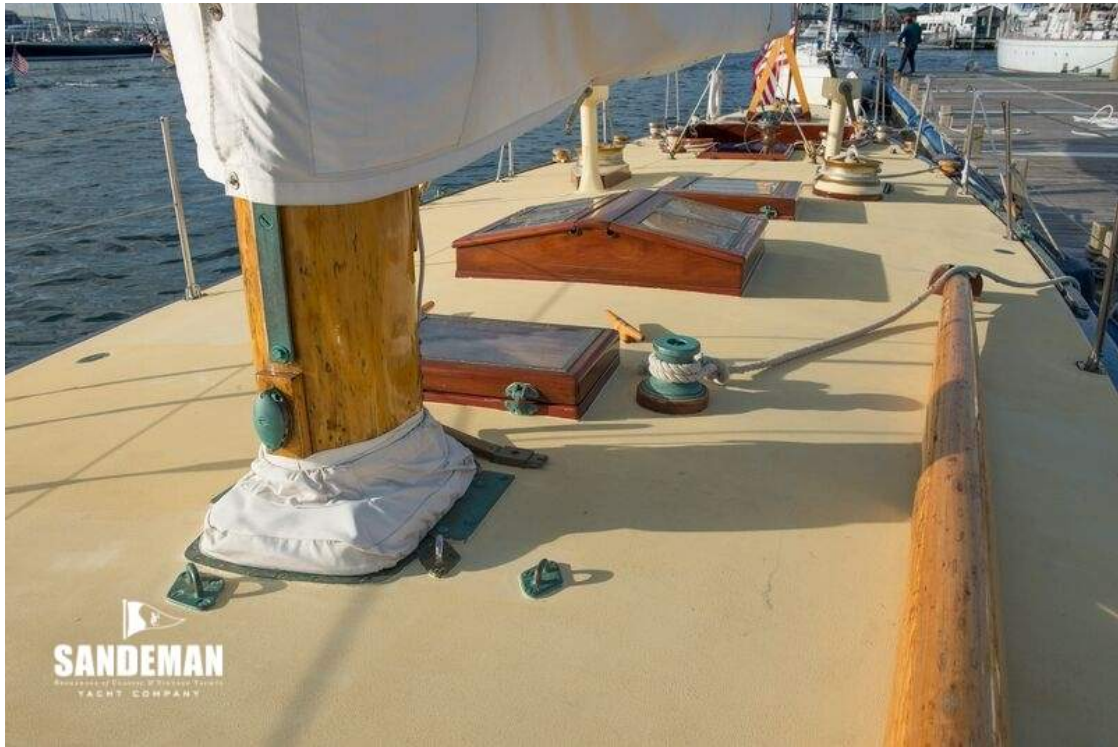




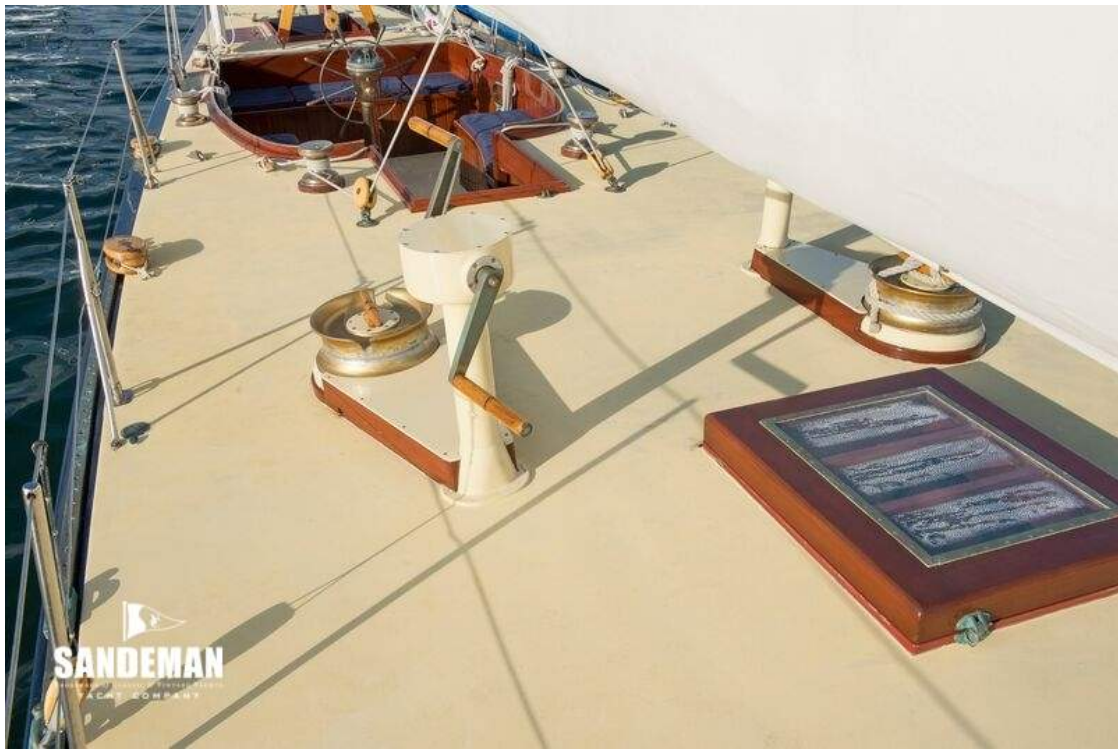


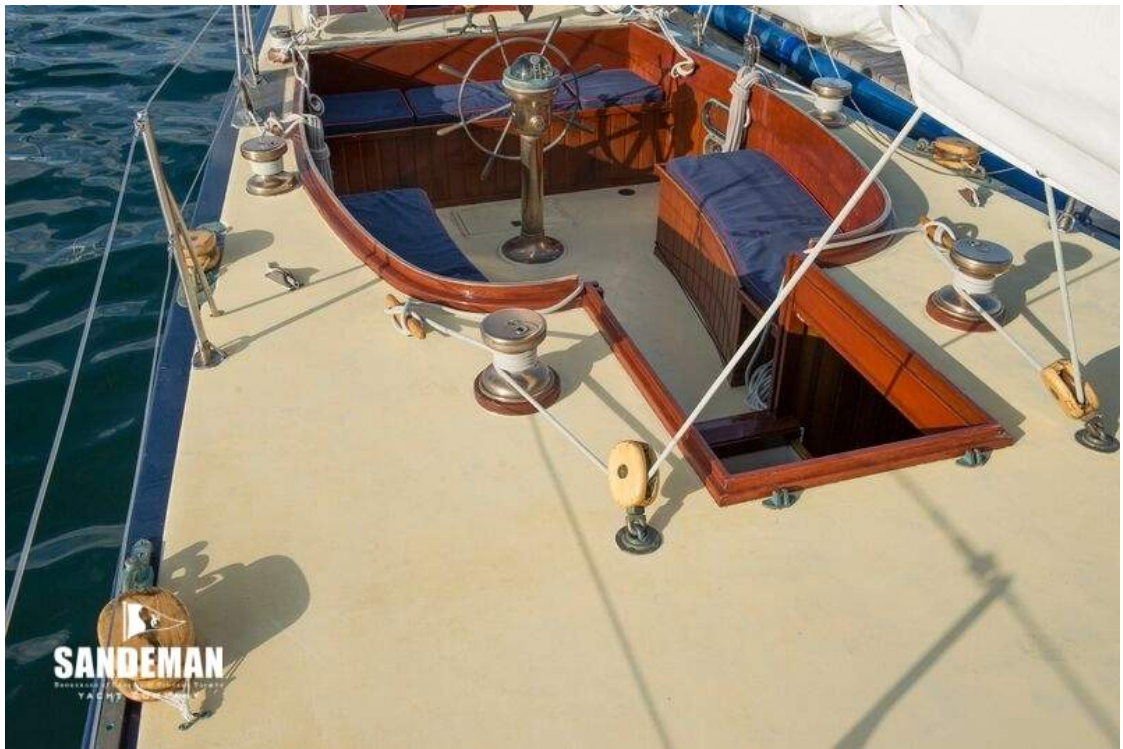








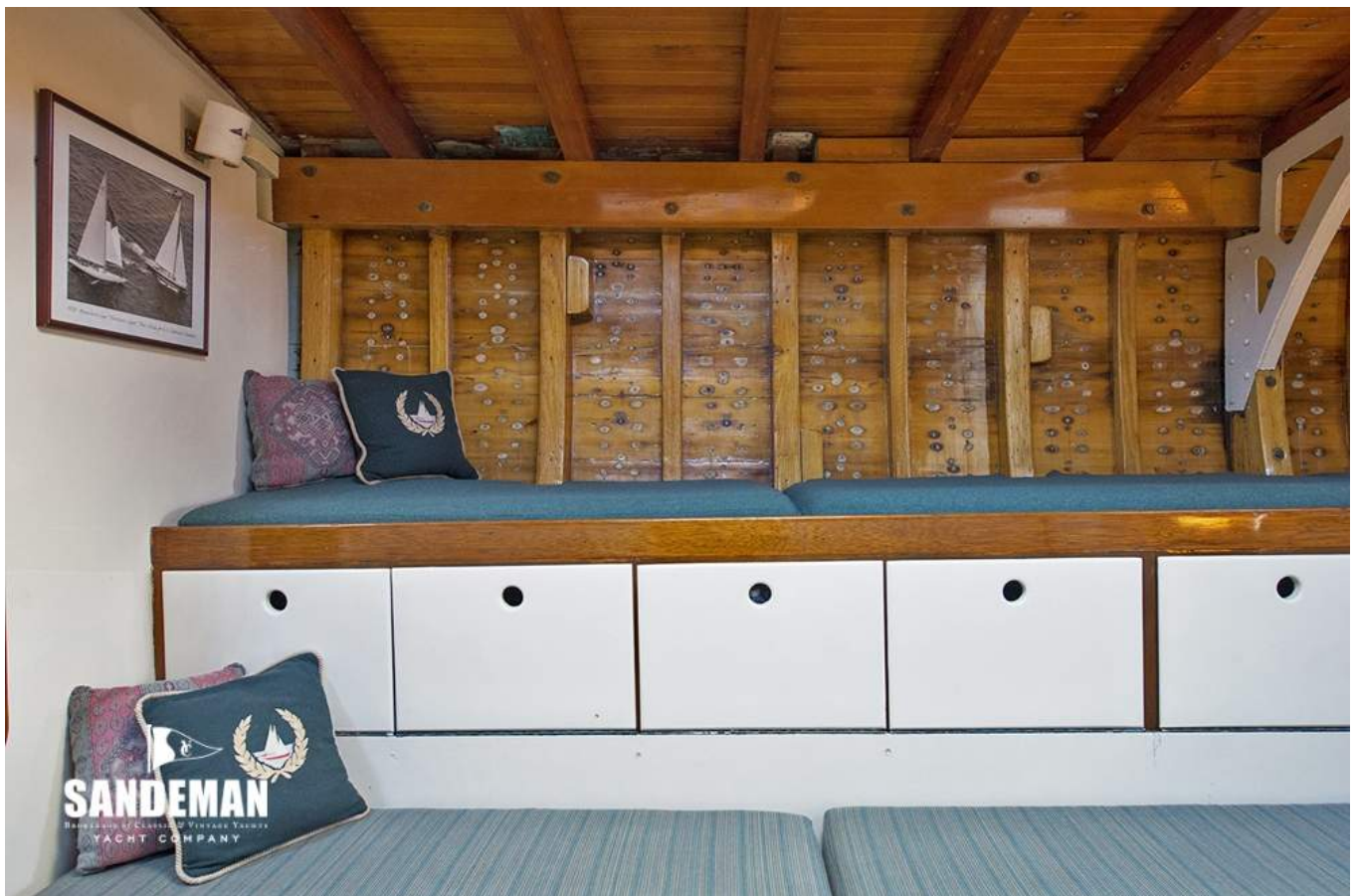
















SANDEMAN
YACHT COMPANY



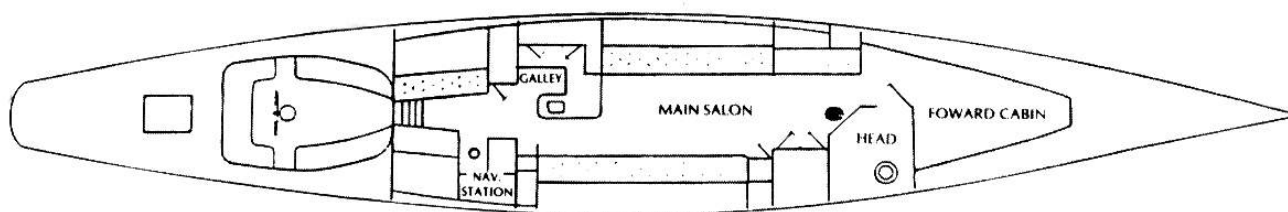

SANDEMAN
SANDERS OF CLASSIC & MODERN YACHTS
YACHT COMPANY



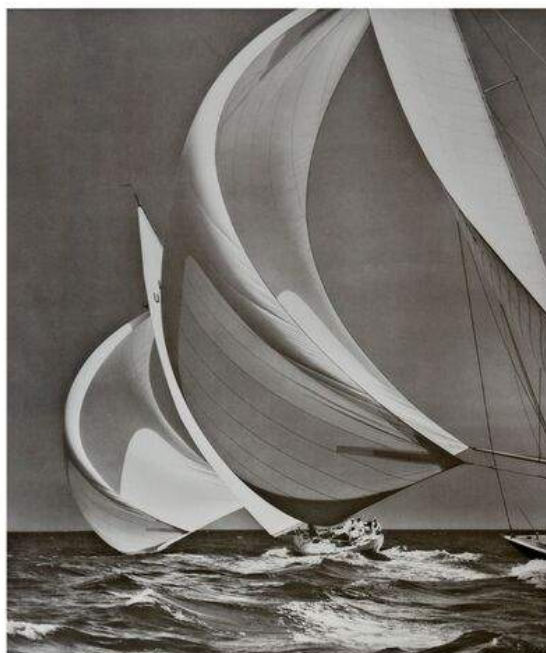








NORTHERN LIGHT



FLYING SPINNAKERS - 1939

Gleam & Northern Light

"Off to Sea Under Sail" Morris and Stanley Rosenfeld, Photographers

