

SPARKMAN & STEPHENS 39 FT SLOOP 1961 - SOLD



Specification

NOVA

SPARKMAN & STEPHENS 39 FT SLOOP 1961

Designer	Sparkman & Stephens	Length waterline	27 ft 3 in / 8.3 m	Engine	Universal M-25 in line 3 cylinder 25 HP Diesel
Builder	Driscoll Custom Boats San Diego CA	Beam	9 ft 10 in / 3 m	Location	USA
Date	1961	Draft	5 ft 11 in / 1.8 m	Price	Sold
Length overall	40 ft 0 in / 12.2 m	Displacement	9.4 Tonnes		
Length deck	39 ft 1 in / 11.9 m	Construction	Carvel mahogany planking on laminated mahogany frames		

These details are provisional and may be amended

Specification

BROKER'S COMMENTS

NOVA presents in impressive structural and cosmetic condition already stored inside and ready for the 2018 season - this is a turnkey option and perhaps the ideal size for an easily sailed family classic yacht with a wonderful pedigree. NOVA is not hard to sail single handed for all those times when you want to be at one with your boat!



• SANDEMAN YACHT COMPANY •
• Brokerage Of Classic & Vintage
Yachts •

www.sandemanyachtcompany.co.uk

SPARKMAN & STEPHENS 39 FT SLOOP 1961

Specification
VAT UNPAID

VAT is unpaid on

this yacht

Specification
HISTORICAL NOTE

NOVA was built by famed San Diego sailor and a Lipton Challenge cup contender Gerald Driscoll as his personal yacht in the 1960s. He sailed out of the San Diego yacht club community to race against such characters as Lowell North (North sails), Skip Caulking, (designer of the 1959 Honolulu race winner LEGEND, also built by Driscoll Boat Works) and Paul Kettenburg's (K-40 TOMBOY II. Kettenburg's yard was adjacent to Driscoll's yard in Shelter Island, San Diego).

While not a lot of historical information is available on NOVA, she did have a near identical sister vessel named GAMIN commissioned by Richard Lerner of Newport Beach in 1960.

"Sea and Pacific Motorboat Magazine" wrote in September 1962 ".....In brief NOVA and GAMIN are 38 ft 11 inches overall with a beam of 10 ft and a sail area of 678 ft². The design is by Sparkman and Stephens. The interiors are beautifully finished."

GAMIN was lost on a reef near Cape San Lazzaro, Mexico during the 1961 Los Angeles to Mazatlan, Mexico race.

Specification
CONSTRUCTION

- Carvel mahogany planking over mahogany laminated frames
- Full length shear clamp
- Oak floor timbers
- Bronze welded grid, strapping supporting the mast step compression
- Chain plate tensioners, mechanically fastened to the frames and floor timbers
- Bronze keel bolts bearing on bronze channels serving as backing plates
- Cast bronze stem fitting supports the forestay loads fastened through the stem and sheer clamp

- Externally bolted lead ballast
- Keel hung wooden plank rudder with bronze hangers, strapping & sheathed trailing edge and shoe
- Cockpit and cabin structures in Honduras mahogany planking
- Coach roof plywood substrate over mahogany frames, with a fibreglass overlay
- Solid teak deck planking on plywood sub deck over mahogany frames with glue edge seams

Specification
ACCOMMODATION AND DOMESTIC EQUIPMENT

- Accommodation for four sleeping in a two-cabin layout
- Interior liners, joinery and cushions meticulously restored
- Access is by sliding hatch and companionway steps down
- Main saloon has a galley to port
- Galley has 2 burner LPG hob and oven
- Adler Barbour 12 V air cooled fridge
- Stainless steel sink and pumped fresh water tap
- Lockers above outboard to port, abaft and below
- Navigation area and pilot berth to starboard

- L shaped dinette forward
- Settee berths port and stbd lockers outboard and under both sides
- Drop leaf table offset to port
- Corridor forward
- Doorway to enclosed head to port with Raritan manual WC and stainless steel basin
- Fore cabin with twin vee berth
- Holmes portable AC heater
- Clarion CMD6 marine stereo
- 2 x Bose cabin speakers

Specification
RIG, SPARS, SAILS AND CANVAS

- Painted aluminium, keel stepped, single spreader mast
- Painted aluminium boom with end boom sheeting
- 1 x 19 stainless steel cable standing rigging with toggled jaw-to-swage turnbuckles
- Schafer System 2 1000 roller furler

- Assorted Garhauer jib lead blocks

Sails

- Pineapple Dacron fully battened mainsail with batt cars
- Pineapple roller furling Dacron jib

- Hall Quick vang
- Assorted sheets
- Wichard pelican hook / rigging screw

- Canvas
- Full boat cover
- Mainsail cover
- 2 x Hatch ventilation hoods
- 2 x Storage bags

Specification

DECK LAYOUT EQUIPMENT AND GROUND TACKLE

From Bow

- Single rail stainless steel pulpit and pushpit
- Double 1 x 19 x 5/32 inch stainless steel lifelines
- Flush fore, side and aft decks
- 2 x Chromed bronze 12 inch bow mooring cleats
- c 200 ft three strand nylon, 1/2 inch anchor rode
- 2 x Stainless steel rail mounted jib tracks with Garhauer leads
- Raised trunk cabin
- 3 x Dorade vents
- Garhauer adjustable mainsheet traveller
- Mechanical backstay adjuster
- 2 x Stainless steel turning blocks
- 2 x Chromed bronze 10 inch stern mooring cleats
- 2 x Stern mooring line chocks

- 2 x Barient #20 single speed halyard
- 1 x Barient #10 single speed halyard
- 1 x Lewmar #30 two-speed self tailing (ST) halyard
- 2 x Andersen #46 two-speed ST cockpit primaries
- 2 x Barient #16 single-speed cockpit secondaries
- 1 x Andersen #40 two-speed ST mainsheet
- Titan plastic 10 inch locking winch handle
- Titan plastic 8 inch locking winch handle

Winches

Bridge deck

- Self-bailing cockpit protected by coamings
- Tiller steering
- Shurflo M/N 4901-4282 deck wash down pump
- Assorted fenders & dock lines
- Mahogany staff with ensign

Specification

MECHANICAL ELECTRICAL AND TANKAGE

- Universal M-25 in line 3 cylinder 25 HP water cooled Diesel @ c 27 hrs
- Spinlock single lever engine control to solid push pull cables
- Universal panel; tachometer, oil pressure, water temp,
- High water temp & low oil pressure alarms, hour metre
- Hurth transmission
- Stainless steel 1 1/8th inch diameter shaft
- Bronze two bladed 15 x 13 inch right-handed propeller
- Sleeve cutlass bearing
- 3 x 12 V Hamilton AGM batteries new 2015

- VAC 125 AC power
- Resettable circuit breakers in panel
- Engine mounted alternator
- Xantrex True Charge 40 + charger
- 30 A shore power
- 1 x 15 gallon Monel fuel tank under cockpit sole
- Stainless steel fresh water tank
- Shurflo house water pressure pump
- Jabsco M/N 18590-2002 holding tank macerator pump
- Type III 8 gallon plastic marine sanitation tank

Specification

NAVIGATION, COMMUNICATIONS AND ELECTRONICS

- B & G Hydra 3000 instrument processor
- B & G Hydra 3000 multi-function display
- B & G Hydra 3000 analogue wind point
- B & G Hydra 3000 analogue wind speed
- B & G Hydra 3000 analogue depth sounder
- Garmin 5208 Map / GPS radar / chart plotter

- Garmin GPS / Map 3206 radar/chart plotter
- Garmin radar scanner
- ICOM IC-M502 VHF radio with cockpit remote
- Bulkhead mounted magnetic compass
- 2 Inclinometers
- Weems Plath 4" clock/barometer set
- Windex masthead wind indicator

Specification

SAFETY

- Kidde ABC chemical fire extinguisher
- 5 USCG Type II universal adult life jackets
- USCG Type IV boat cushion
- West Marine handheld bilge pump

- Whale Gusher 10 manual bilge pump
- Johnson remote 12 volt bilge pump
- Rule 2000 submersible bilge pump with float switch

- 2 x Whale MK IV foot pumps

Specification

MISCELLANEOUS EQUIPMENT

- Guest handheld 12-volt spotlight
- Plastic toolbox with spares

- 2 x Canvas tool bags with miscellaneous hand tools
-

Specification

RESTORATION AND REFIT

2010 Refit included

- Hull work
- Complete paint
- All electronics and wiring
- Main engine,

- 5 x Strakes on starboard side and 12 on port side replaced
- Wooded the bottom, inspected for any rotten planking
- New Hamilton AGM series batteries installed
- Thru-hull fittings serviced
- Threads on engine for transmission dipstick reamed and re-tapped
- A vent slot in the access panel of propane locker created.
- Hatch checks and breakages replaced
- Any lifting paintwork on cabin house removed and repainted
- Any old varnish lifting above decks scraped back; new coats built up
- One full maintenance coat applied over all bright work
- New paint applied on top, bottom and boot
- New bilge drain plug installed

2011 Restoration

- Restoration of hull, deck, rigging and finishes by Keefe Kaplan Maritime, Inc. Richmond CA
- Refinished with linear polyurethane marine enamel, maintaining much of original gloss

2012 New sails

2015 Refitting and maintenance in

- Large section of stem replaced, stepping back layers from the stem head almost to water line
 - Frame ends sistered and or repaired; two abaft engine and some around the mast step
 - Planking softened by grounding strap electrolysis from chain-plates to the mast step; replaced
-

Disclaimer

These particulars have been prepared from information provided by the vendors and are intended as a general guide. The purchaser should confirm details of concern to them by survey or engineers inspection. The purchaser should also ensure that the purchase contract properly reflects their concerns and specifies details on which they wish to rely.

SPARKMAN & STEPHENS 39 FT SLOOP 1961

Specification
GALLERY









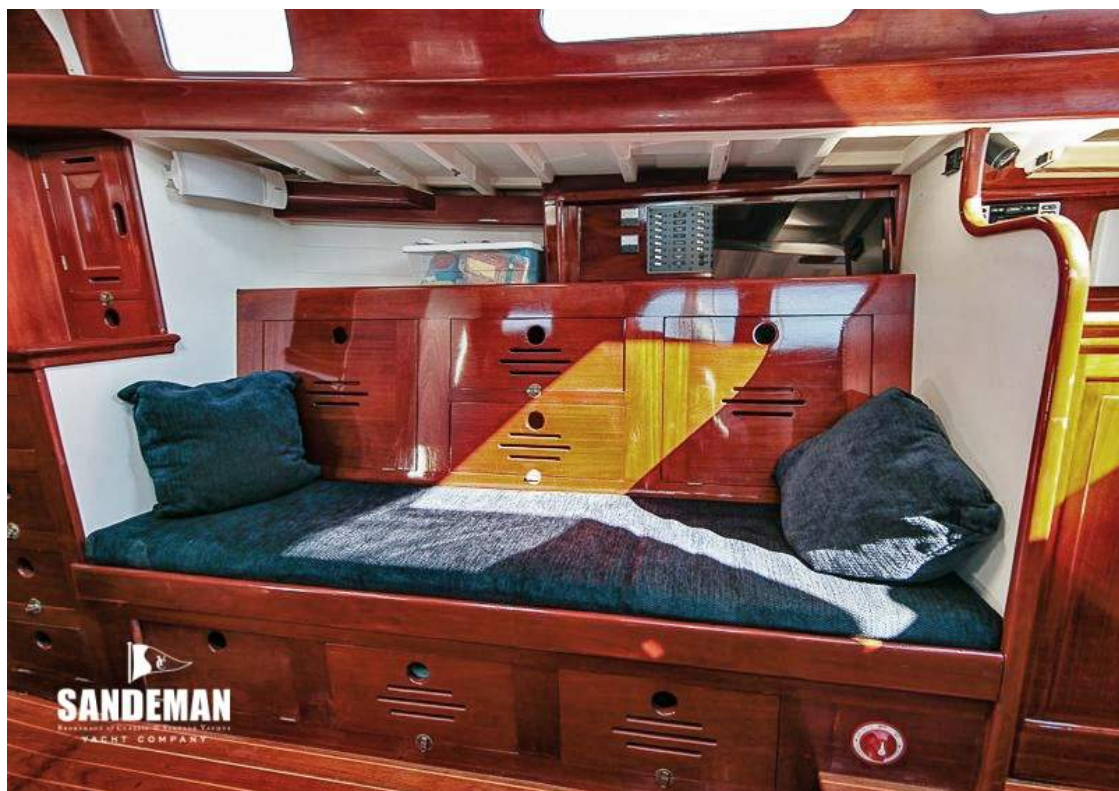






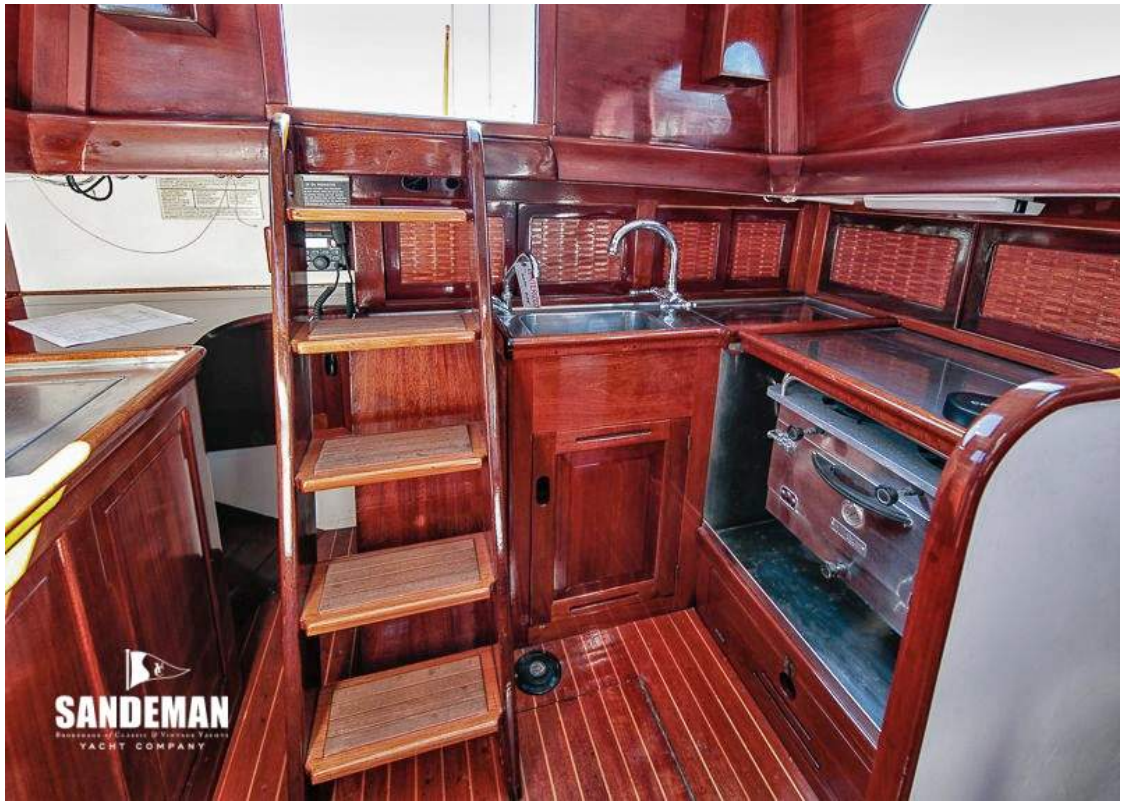
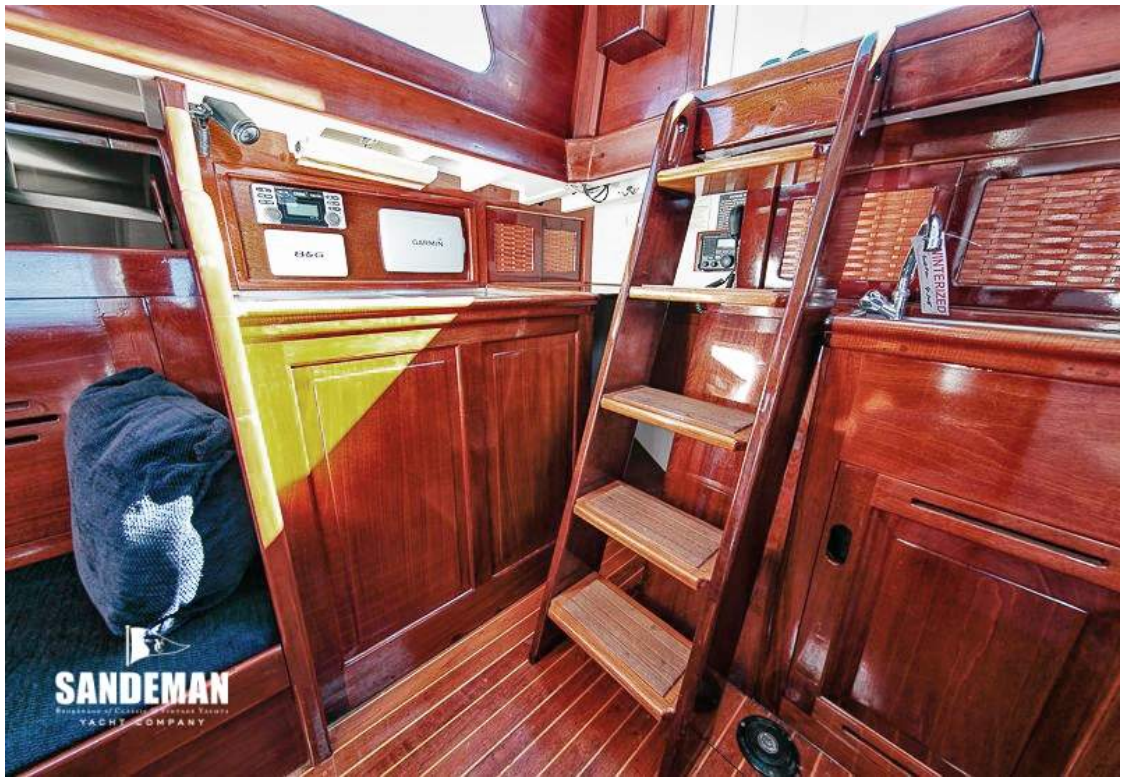


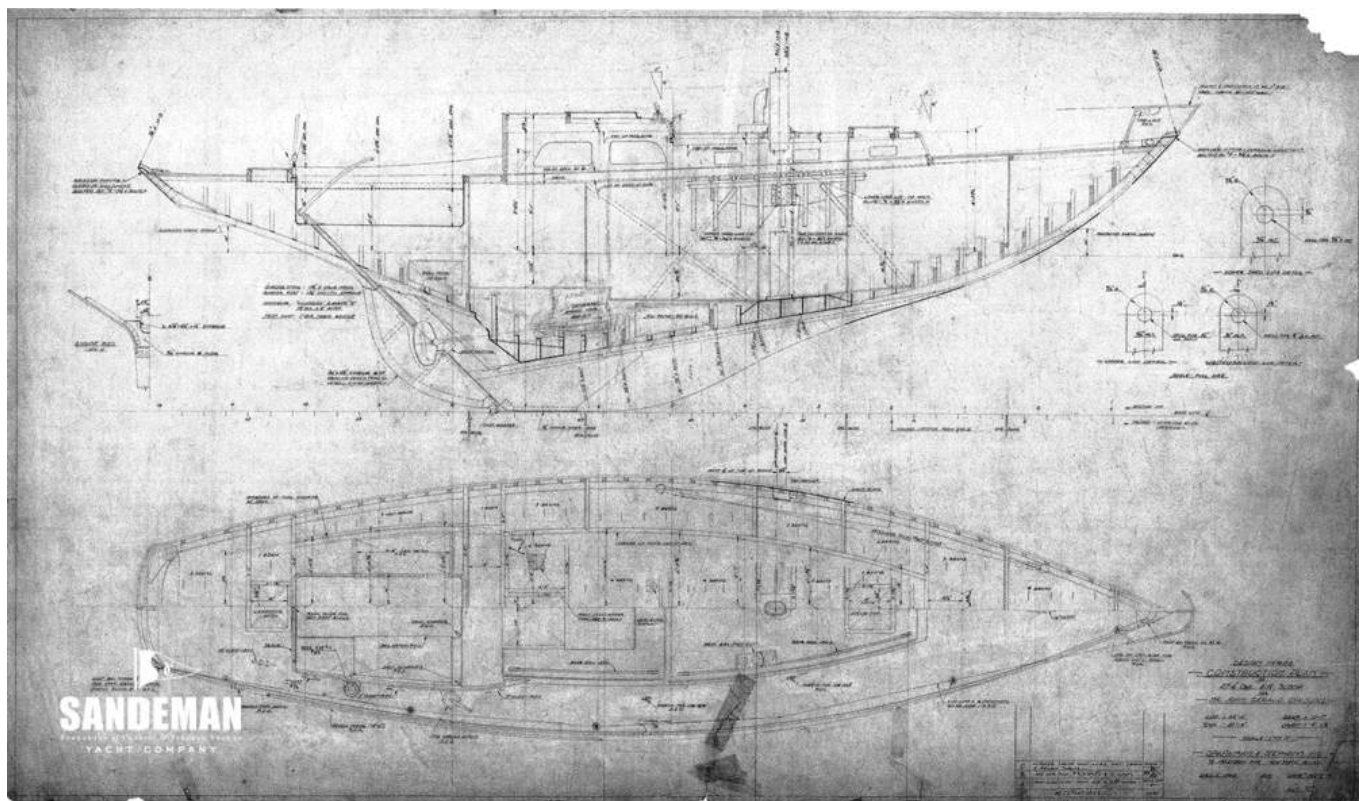


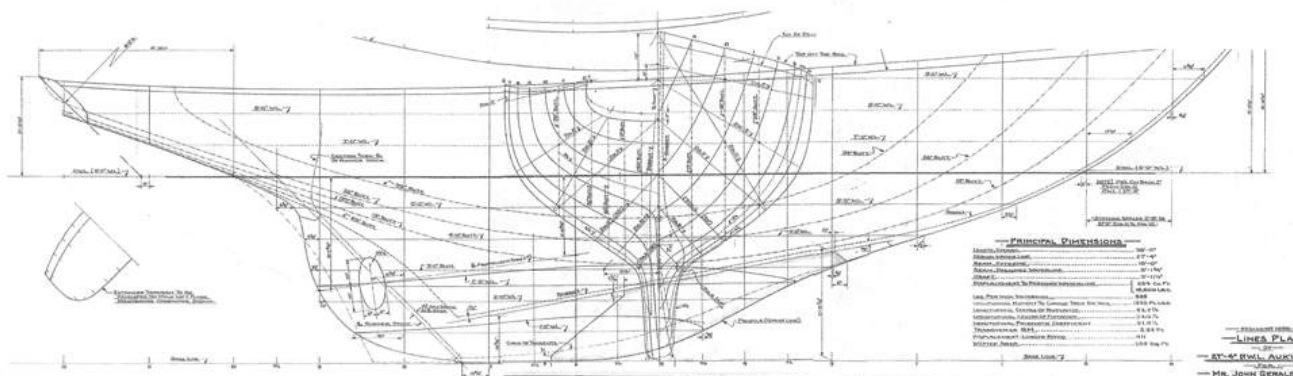
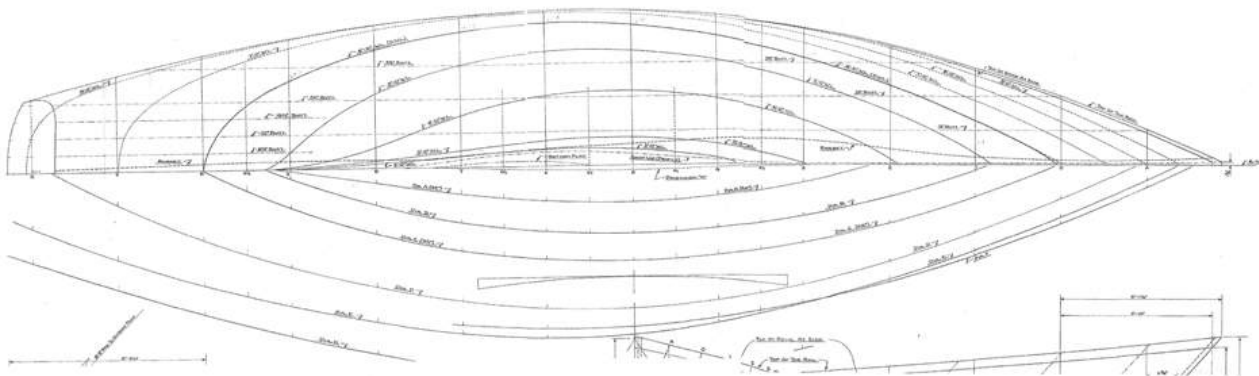












Copyright (C) Sparkman & Stephens, Inc.

PRINCIPAL DIMENSIONS

Length Overall	100'-0"
Length Between Perches	80'-0"
Beam	12'-0"
Depth	10'-0"
Displacement	1000 tons
Speed	10 knots
Range	1000 miles
Consumption	10 tons per day
Armament	10 guns
Complement	100 men
Cost	10 million dollars

— DRAWING NO. —
— LINE PLAN —
— BY JOHN SCOTT & CO. —

