

74 FT ANDERSEN STAYSAIL SCHOONER 1937 - SOLD



Specification

ORIANDA

74 FT ANDERSEN STAYSAIL SCHOONER 1937

Designer	Carl Andersen	Length waterline	0 ft 0 in / 0 m	Engine	Cummins BTA 5.9 M1
Builder	Rasmus Moller, Faaborg, Denmark	Beam	16 ft 5 in / 5 m	Location	Spain
Date	1937	Draft	9 ft 6 in / 2.9 m	Price	Sold
Length overall	85 ft 0 in / 25.9 m	Displacement	46.6 Tonnes		
Length deck	74 ft 2 in / 22.6 m	Construction	Carvel oak plank and frames		

These details are provisional and may be amended

Specification

BROKER'S COMMENTS

Built for the Danish Royal family, but perhaps more treasured in her current ownership than ever before, ORIANDA, is still the perfect family yacht.

Massively built, her interior volume is large for a yacht from this period; 3 double cabins and separate crew cabin; vast space on deck for dining (and sailing!) a classic vessel optimised to stay out of port and large enough to make this an option is a rare thing. She is a beautifully winning combination of

European elegance and strength. Attention to detail aboard means the beauty of varnished wood and polished brass, comfortable, immaculate accommodation and even bespoke dinnerware. Created in the waning days of a bygone era, when elegance was an integral part of the supreme adventure under sail ORIANDA has nonetheless been cared for lovingly by her subsequent owners including an English family for 5 years and for the last 15 years; a family in Spain



• SANDEMAN YACHT COMPANY •
• Brokerage Of Classic & Vintage
Yachts •

www.sandemanyachtcompany.co.uk

74 FT ANDERSEN STAYSAIL SCHOONER 1937

Specification CONSTRUCTION

The carvel hull is built of oak planking on oak frames and a cast iron long keel. The decks are caulked

teak planking and superstructure is of mahogany and teak. Both masts are of rolled steel.

Specification DECK LAYOUT

From the open cockpit aft with its impressive wheel housing and external conning position move forward to the enclosed dog house; a spacious navigation position a higher visibility vantage point. Forward and offset to starboard is the companionway access down steps to the accommodation below. Wide and uncluttered decks either side provide

ample space, whether for handling sail under way or for entertainment. The main saloon skylight roof folds out as a magnificent table for al fresco dining. Three further skylights amidships leave space between and to the sides for sun loungers. Just aft the foremast is another companionway access down to the for'ard accommodation.

Specification ACCOMMODATION

As well as on deck, ORIANDA provides supreme comfort in luxury surroundings below. Spacious accommodation comprises a master / owner double berth cabin, two guest cabins with berths for six guests and a separate cabin for a crew of 3.

Forward of the saloon are the two guest cabins, each with upper and lower berths and beyond those the galley to port with small crew mess opposite. The fore peak accommodation comprises 3 single berths and head.

The master cabin with single berths either side is situated aft with its own en suite bathroom for'ard to port. There's a day head opposite before the saloon.

The Main Saloon retains all of its original character - overhead deck beams, skylight with its beautiful polished mahogany panelling and furniture, nevertheless decorated in contrasting fabric in keeping with the style give a light but warm ambience. Concessions to the modern age provide the comfort of air-conditioning and entertainment facilities including LCD-television system, music and DVD; all wonderfully concealed however unless actually in use. All staterooms have fan coils, plus opening deck hatches for light and ventilation.

Specification DOMESTIC EQUIPMENT

- 3 x Refrigerators (Edesa, Liebherr)
- Freezer (Edesa)
- Oven; Microwave (Sanyo)
- 2 x Burners- electric (Teka)

- Icemaker (U-Line Automatic)
 - TV; LCD Loewe
 - DVD; Yamaha
 - Music System; Yamaha (main saloon and on deck)
-

Specification RIG, SPARS AND SAILS

- Marconi rig
- Two steel masts and three wooden spars last refitted & painted in 2007
- Standing rigging in stainless steel

- Running rigging in nylon
 - Mainsail, headsail, foresail; all by Quantum sails; new from 2005
 - Genoa
 - Genniker
-

Specification DECK EQUIPMENT AND GROUND TACKLE

- 2 x anchors (150 lbs QRC; new in 2005 and 75 lbs)
- 100 m x 20mm Chain
- Windlasses electric
- 4 x manual davits
- 1 x capstan
- 8 manual winches (1 steel, 7 bronze; all re chromed since 2005)
- Side boarding swimming ladder
- Passarelle; teak and stainless steel
- Sun awning in three sections
- Winter covers; full covers throughout
- Deck shower
- Search light & Horn

Specification

MECHANICAL ELECTRICAL AND TANKAGE

- Single Cummins BTA 5.9 M1 diesel engine with 64 HP (224 kW)
- Two fuel filters
- Gear boxes: reduction gear 2.3:1
- Single 3 bladed 660 mm propeller; new 2005
- Steering positions and engine controls integrated in the autopilot
- Max speed 9 Kts, cruising speed 6 kts @ 2,000 rpm
- Consumption at cruising speed; 40 ltr
- 2 x generators: 1 Onan (7 kW), 1 Fisherpanda (3,5 kW)
- Two Power converters Voltage: 220 V, 24 V, 12 V
- 220 V AC shore power
- 2 x 12 V batteries
- Mastervolt battery charger
- Condaria air conditioning with independent fan coils in each cabin
- Electric water heating for 100 ltr
- Ecosystem water maker 120 LPH
- Condaria heating with independent fan coils in each cabin
- Electrical sanitary system from Jabsco
- 5 x stainless steel fuel tanks total 3,000 ltr
- 3 x stainless steel fresh water tanks total 2,500 ltr
- 1 x stainless steel grey water tank; 1,000 ltr

Specification

NAVIGATION AND COMMUNICATIONS

- Autopilot - Detrec
- Plotter - Navionic
- Radar - Foruno
- GPS - Shinmade
- Depth sounder - B & G
- Wind instruments - B & G
- Compasses - Plastimo
- Rudder indicator integrated in the autopilot
- Sailor VHF with GMDSS compliant integrated
- 2 x Handheld Raymarine VHF

Specification

SAFETY

- 2 x Liferafts from Zodiac for 10 people each
- Fire extinguishers
- Bilge pumps 3 + 3 Jabsco (+1 manual of 220v)
- E.P.I.R.B.406

Specification

MISCELLANEOUS EQUIPMENT

- ORIANDA has undergone a significant refit since 2005. Wherever work has been done the owners have insisted on the highest possible workmanship and standards. In addition to any items already mentioned the key works undertaken include:
- Removal and replacement of all planking above and below the waterline
 - All frames and fastenings checked and where necessary replaced
 - Stem post replaced
 - All keel bolts checked and where necessary removed and replaced; all treated
 - The teak deck planks re caulked
 - Caprail, renewed where necessary and re varnished
 - Bow net renewed
 - All varnished wood sanded back and multi coat re varnished
 - Both masts unstepped and checked
 - The step for the main mast reworked
 - All standing rigging renewed
 - Electric wiring stripped and renewed with new points and lights
 - Most electrical, electronics and safety equipment renewed
 - Plumbing checked throughout and where necessary replaced

Disclaimer

These particulars have been prepared from information provided by the vendors and are intended as a general guide. The purchaser should confirm details of concern to them by survey or engineers inspection. The purchaser should also ensure that the purchase contract properly reflects their concerns and specifies details on which they wish to rely.

74 FT ANDERSEN STAYSAIL SCHOONER 1937

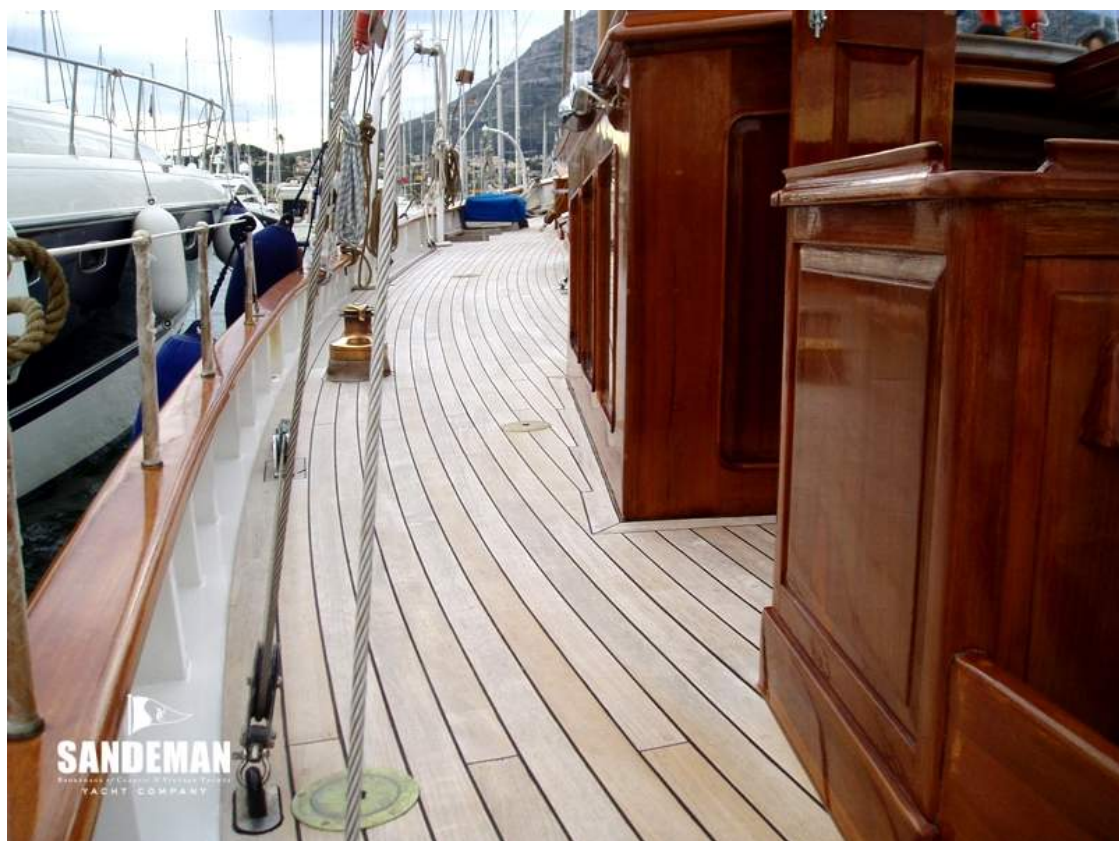
Specification
GALLERY









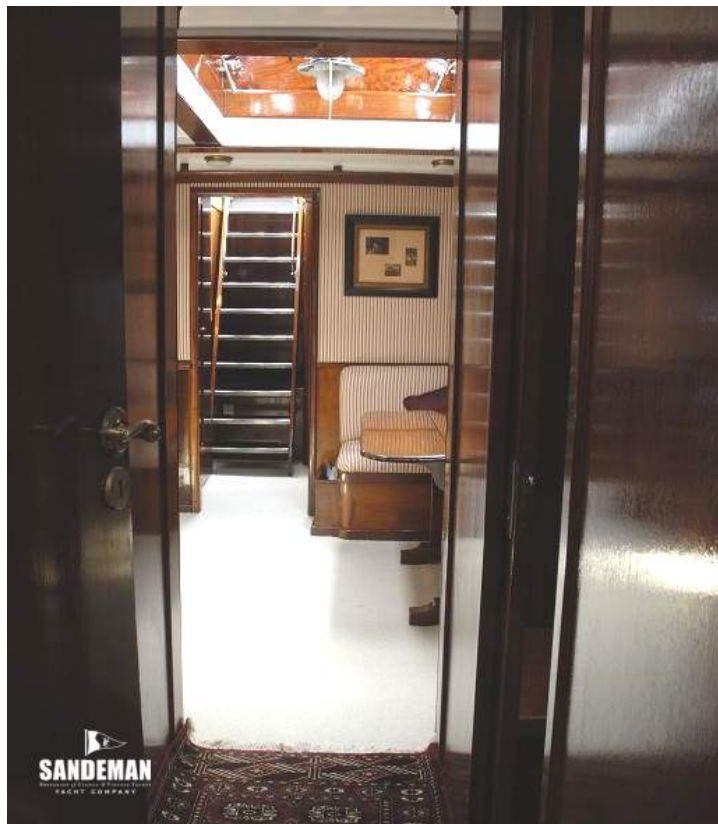


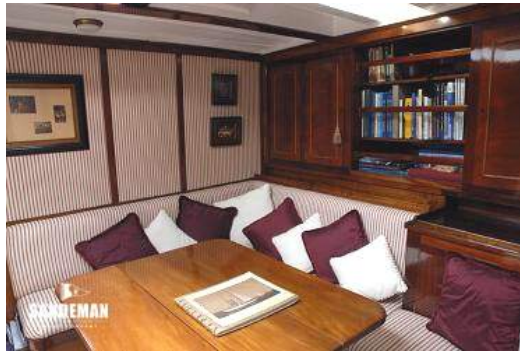
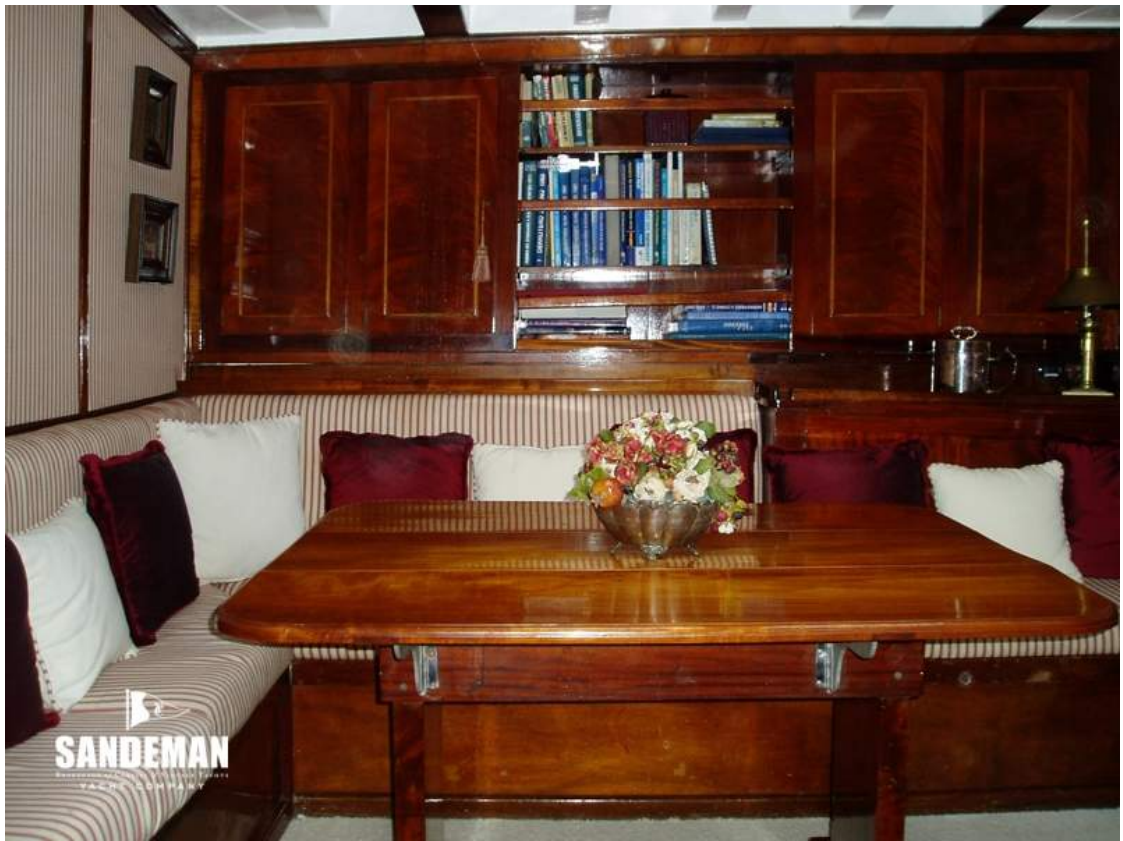


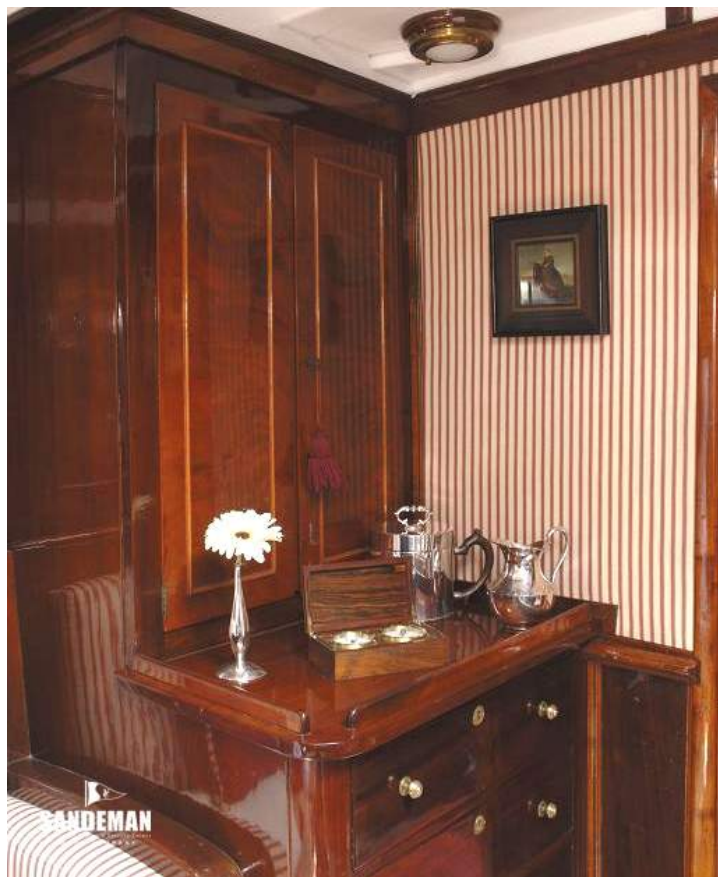






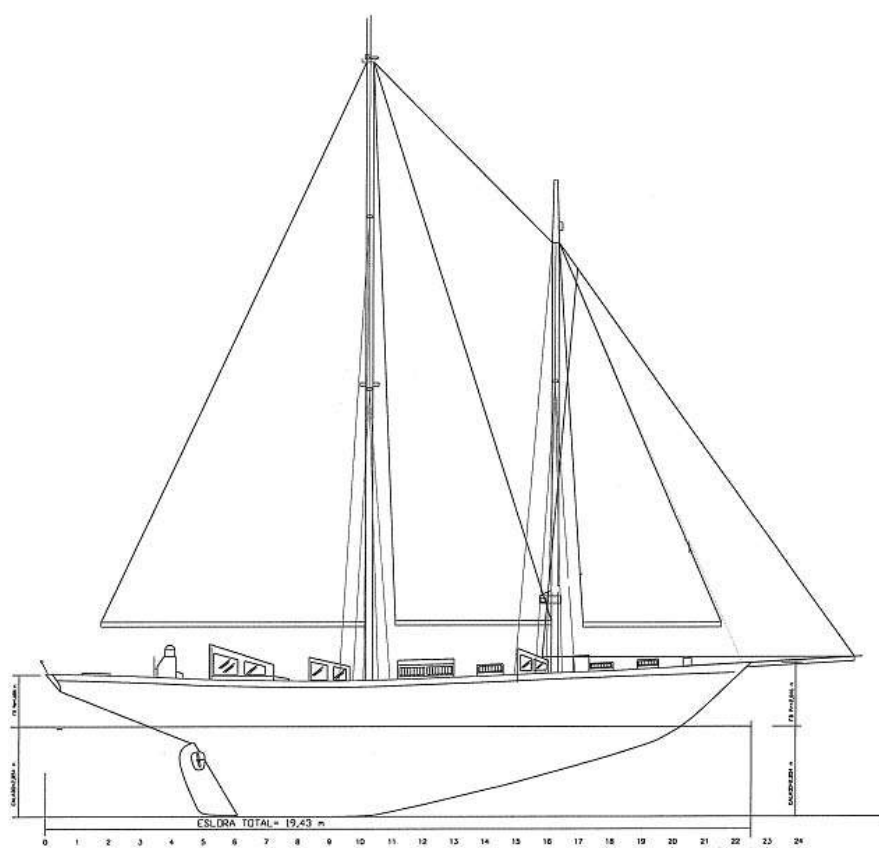






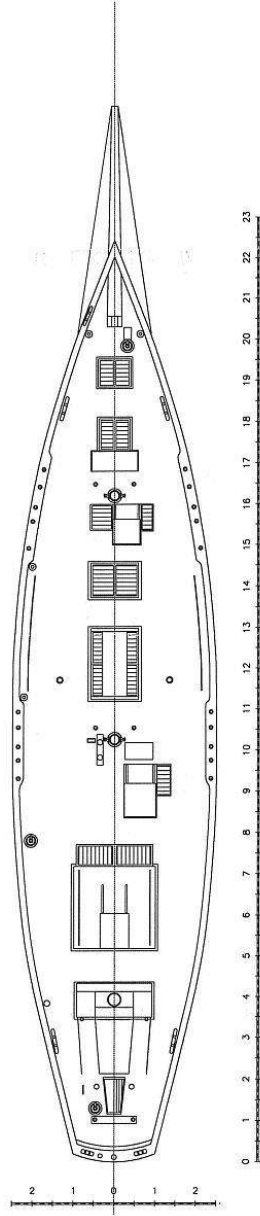






DIMENSIONES PRINCIPALES

ESLORA TOTAL	22,48	M
MANGA	5,01	M
PUNTAL	3,97	M
CALADO	2,85	M



ORIANDA

NOMBRE DEL BUQUE:	---	TIPO:	GOLETA DE STAY
MARCA:	---	PLANO:	CUBIERTA
FECHA:	07/06/79	DELUADO:	
ESCALA:	1:50	APROBADO:	

NOMBRE DEL BUQUE:		ORIONDA	
MARCA:	TIPO:	GOLETA DE STAY	
FECHA:		PLANTAS:	
ESCALA:	01/04/79	1:200/3	
		DIBUJADO: 	
		APROBADO: 	



