

KNUD REIMERS 82 FT YAWL 1950 - SOLD



Specification

AGNETA

KNUD REIMERS 82 FT YAWL 1950

Designer	Knud Reimers	Length waterline	65 ft 7 in / 20 m	Engine	Iveco 6 cyl 200 HP Turbo Diesel
Builder	Plym Stockholm	Beam	13 ft 9 in / 4.2 m	Location	France
Date	1950	Draft	9 ft 7 in / 2.93 m	Price	Sold
Length overall	82 ft 0 in / 25 m	Displacement	37.5 Tonnes		
Length deck	82 ft 0 in / 25 m	Construction	Mahogany planking on laminated oak frames		

These details are provisional and may be amended

Specification

BROKER'S COMMENTS

AGNETA has many features of the Square Metre boats for which her designer Knud Reimers became famous – but combined with those of fast ocean racers of the period making her perhaps an early version of today's “mini maxis”. Having one of his designs described by Uffa Fox “.....as near to perfection as it is possible to get in this imperfect World” Reimers\ AGNETA surely qualifies ! It is probably not surprising with his lust for beautiful things and enthusiasm for the sport, that Gianni Agnelli was to become AGNETA's owner. More recently her light displacement and awesome performance has brought her wins in the Vintage classes of Mediterranean Classic regattas. AGNETA is offered in impressive condition and absolutely ready to Classic race or cruise in comfort.



• SANDEMAN YACHT COMPANY •
• Brokerage Of Classic & Vintage
Yachts •

www.sandemanyachtcompany.co.uk

KNUD REIMERS 82 FT YAWL 1950

Specification
HISTORY

Original owner Mr. Wiberg kept the boat until 1959 when she was purchased by Mr. Gianni Agnelli, known as an admirer of beautiful and fast yachts. Mr Agnelli took AGNETA to The Mediterranean where she still lies, drawing admirers in every harbour she graces. A keen yachtsman, Fiat Chairman Gianni Agnelli enjoyed more than 25 years of cruising and racing on this distinctive varnished hull yawl with her maroon sails. A paragon of beauty, and as a (light displacement) performer in on the Mediterranean Classic Yacht regatta racing circuit, she became very well known.

Guiseppe Antolini, her next owner, had the yawl thoroughly overhauled at Carlini Yard in 1987. Following the wishes of his wife Raffaella, the interior was redesigned and lavishly rebuilt using rare woods. Together with helmsman Flavio Scala, a well known Italian Olympic sailor, AGNETA was a very successful regatta boat. Her next owner from 1999 Mr. Peter Engels, completely refitted the yacht taking into careful consideration her history and original design. He regarded her as a piece of art, a historical monument of classic yacht construction.

Specification
CONSTRUCTION

- Varnished Honduras mahogany planking on laminated oak frames, copper riveted.
 - Oak backbone
 - Teak deck, coachroof, cockpit
 - Mahogany superstructure
-

Specification
ACCOMMODATION AND DOMESTIC EQUIPMENT

- 6 -7 owner and guest berths in 3 cabins plus crew quarters for 2/3
 - Varnished mahogany interior furnishing with ash cabin soles with mahogany inlays
 - Sliding hatch and companionway steps down from fwd cockpit
 - Top loading deep freeze (refit 2012)
 - TV, DVD, Sound System 2012
 - Laptop work station
 - Table and settee to starboard, stowage under
 - Seating upholstery new in 2012
 - Air conditioning
 - Corridor forward
- From aft Cabin
- 2 x single berths and chart table between
- Guest cabin to port
- 1 Pullman berth and another single berth below
 - 2 x ports; one opening
 - Hanging locker reading and deck head lights
 - En suite head with Sanimarin Comfort Plus WC new 2012
 - Shower and basin
 - Vent to cockpit and light by lemon squeezer in deck
- Guest cabin to starboard
- 1 Pullman berth and another single berth below
 - 2 x ports; one opening
 - Hanging locker reading and deck head lights
 - En suite head with electric electric Sanimarin Comfort Plus WC new 2012
 - Shower and basin
 - Vent to cockpit and light by lemon squeezer in deck
- Saloon with extended butterfly hatch over refitted 2012
- Large cabinet to port and crockery cupboards both sides
- Galley to port fully equipped and modified 2012
- Large stainless steel work surface and sink
 - Brandt 2 burner hob, grill and oven
 - Microwave
 - Fridge (refit 2012)
- Spacious Owner's double stateroom to starboard newly equipped 2012
- Forward part of butterfly hatch over
 - Marble fireplace and en-suite bathroom
 - Large double berth to starboard
 - 4 x drawers below
 - 2 x large hanging lockers
 - Numerous small lockers
 - En suite head with Sanimarin 35 WC – new 2012, wash basin, large shower and cupboards
 - Air conditioning
- Foc'sle cabin
- Fore deck hatch way access to crew quarters
 - 2 x berths
 - Head with shower and Sanimarin Comfort Plus WC new in 2012
 - Stowage forward for misc stores and anchor chain locker
-

RIG SPARS AND SAILS

- Marconi Bermudan Yawl
 - Canadian silver spruce main mast 2004, mizzen mast and booms 2001
 - Spinnaker pole
 - Jockey pole
 - Stainless steel standing and mixed fibre running rigging (2003 / 2004 / 2009)
 - Demountable stay sail stays
 - New main and genoa sheets 2012
 - Reckman genoa furling 2011/12 incl new cable forestay
 - 2 x New Spectra A headsail halyards (2009)
 - Dynema mainsail halyard new 2012
 - Mainsheet blocks are wooden checked with Harken working parts
 - Mainsail / Mizzen & genoa sheets new 2012
- All sails are tan coloured Dacron from Polyant Dimension except spinnaker, gennaker and mizzen staysails (white Nylon)
- 2 x Mainsails (1 cruising, 1 racing) (2006)
 - Genoa 130 % (2004)
 - Genoa 150 % racing (2008)
 - Yankee 1 (2005)
 - Yankee 2 (2003)
 - Stay sail (2005)
 - Mizzen (2002)
 - Spinnaker (2002)
 - Asymmetric spinnaker heavy (2002)
 - Asymmetric spinnaker light (2009)
 - Mizzen stay-sail
-

Specification

DECK LAYOUT, EQUIPMENT AND GROUND TACKLE

- Deck layout from aft
- Very wide and clear side decks and spacious aft deck
 - Demountable pushpit
 - 2 x Teak mooring cleats
 - Chromed mushroom vent
 - Large hatchway abaft mizzen mast to large lazarette (houses aircon compressor etc)
 - Raised trunk cabin forward of mizzen houses navigation station aft end of cockpit
 - 2 x single guest / pilot berths
 - Chart table with large drawers for charts
 - Sliding hatchway access forward to helm position in after cockpit
 - Teak seating and sole in both cockpits
 - Bridge deck divides aft from forward cockpit with instrument displays housed therein
 - Port side instruments: depth and engine alerts; rpm, Volt, temp, oil pressure, nav lights
 - Starboard: compass, windage, wind speed boat speed
 - Chrome genoa tracks on cap rail
 - Chrome (uprights) and teak cross bar boom galleys
 - 2 x Lemon squeezer decklights by fwd cockpit
 - Doghouse with handrails along coach roof
 - 2 x Dorade boxes by main mast
 - Chromed pin rail at base of main mast
 - Butterfly hatch and sliding hatch forward
 - 3 x deck light prisms in decks forward
- Winches - all self-tailing
- 2 x Andersen 2 speed stainless-steel 78 (genoa and spinnaker) aft deck
 - 2 x Andersen 2 speed stainless-steel 68 (main sail), each side of cockpit
 - 2 x Andersen 2 speed stainless-steel 52 (staysail) fwd doghouse
 - 3 x Andersen 2 speed stainless-steel 46 (main mast)
 - 1 x Andersen 2 speed stainless-steel 46 electric main sail hoist on deck 2012
 - 1 x Andersen 2 speed stainless-steel 46 on deck by main mast 2012
 - Maxwell 4000 W Windlass refit incl wood base and deck installation 2012
 - 2 x anchors, 100m chain and lines
 - Anchor rollers, cleats
 - Demountable pulpit
- Miscellaneous deck equipment
- Fenders, mooring lines
 - Avon 4.2m semi rigid tender+ Mercury 25 HP outboard
 - Nav lights in wooden casing
 - Complete set of winter storage covers
 - Large awnings forward + deck
 - Cockpit table
 - Cockpit light
 - Boarding ladder
 - Snorkelling equipment
-

Specification

MECHANICAL, ELECTRICAL AND TANKAGE

- Iveco 6 cyl 200 8001 series Diesel engine 2001
- Cruising 8 knots max speed 10 knots
- Max prop 3 blade feathering propeller
- Chromed helm wheel to cable steering
- Kohler 6 KW Generator, 1500rpm 220 V / 50 Hz (2001)
- Service alternator 100 Ah new 2012
- Engine alternator 70 Ah new 2012
- 220 V / 50 Hz Shore power or generator power
- 24 V DC Service batteries
- 600 Ah Sonnenschein gel service batteries 24 V (2004)
- 220 V AC / 24 V DC Electric isolator panel in Nav station
- Sea Recovery 150 Lph Water maker (service 2012)
- Climma CWS Air conditioning in accommodation (refit 2012)
- Compressor and evaporators for fridges and freezer new 2012
- 2 z Gianceschi and Ramachioti Fresh water pump (service 2012)
- 2 x ATI Boilers (service 2012)
- Fuel capacity 700 Litre / circa 154 US gallons in 8 x stainless tanks
- Easy flow fuel gauge system – gauge on each tank
- Manual pump transfer to day tank
- Tecnicomar water maker 150 Litre per hour / 33 gallon per hour

- 2 x 12 V Engine batteries (2008)
 - Separate windlass Gel 24 V batteries (2005)
 - Victron Skylaa 24 V 80 Ah service battery charger (2012)
 - Mastervolt windlass battery charger 24/75
 - 24 / 220 V Inverter for computer / TV
 - Water Capacity 450 Litre / circa 100 US gallons in 4 x tanks
-

Specification

NAVIGATION COMMUNICATIONS AND ELECTRONICS

- B&G Hydra 2000 hydraulic auto pilot 2012
 - Raymarine C80 chart plotter
 - B&G instruments as detailed under cockpit bridge deck
 - B&G processor 2012
 - New B&G wind sensor + base
 - New Furuno 32GPS
 - JRC GPS 100
 - Icom IC 401Fixed VHF
 - Portable VHF ICOM
 - Raymarine C series chart plotter display
-

Specification

SAFETY

- Engine driven bilge pump
 - Electric bilge pump new (2012)
 - Manual bilge pump
 - Mc Murdo EPIRB
-

Specification

REFITS

- New deck from 2001 - Burma Teak over 100 A4 marine plywood sub deck
 - All spars renewed from Canadian Silver Spruce as indicated above
 - All standing and running rigging new 2003 and updated as shown since
 - 2011 - 2012 Major refit both external and interior covering all aspects - details available
 - 2011 - 2012 Substantial re varnishing of all bright work
-

Disclaimer

These particulars have been prepared from information provided by the vendors and are intended as a general guide. The purchaser should confirm details of concern to them by survey or engineers inspection. The purchaser should also ensure that the purchase contract properly reflects their concerns and specifies details on which they wish to rely.

KNUD REIMERS 82 FT YAWL 1950

Specification
GALLERY












SANDEMAN
HANDMADE OF CLASSIC & VINTAGE YACHTS
YACHT COMPANY












SANDEMAN
MAKERS OF CLASSIC & MODERN YACHTS
A YACHT COMPANY








SANDEMAN
Restoration Center & Motor Yacht
YACHT COMPANY




SANDEMAN
A Division of Sandeman Yacht Company
YACHT COMPANY












SANDEMAN
BASED ON CUSTOMER FEEDBACK
YACHT COMPANY

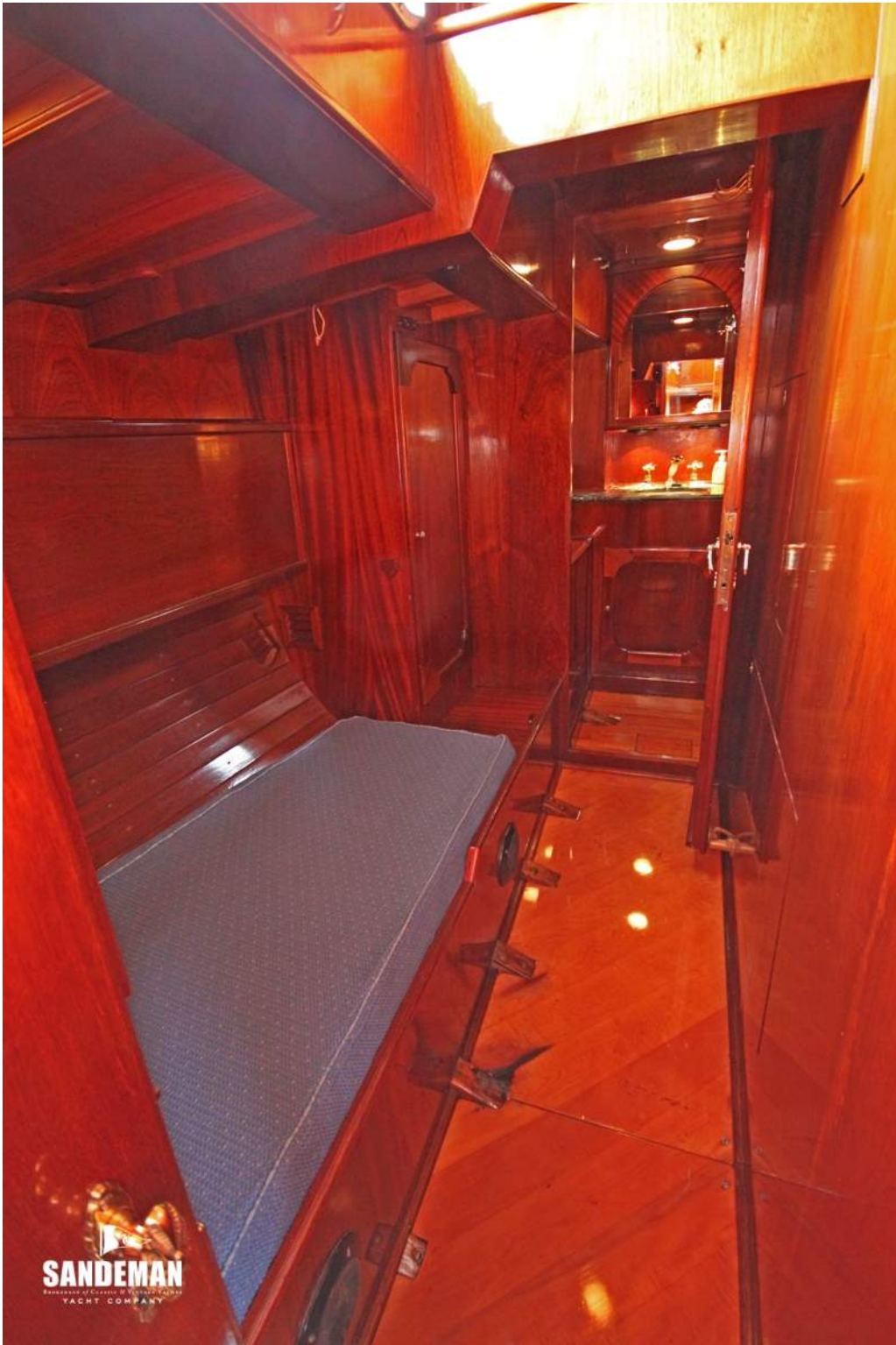



SANDEMAN
SANDERSONS OF CANADA & SYDNEY YACHTS
YACHT COMPANY



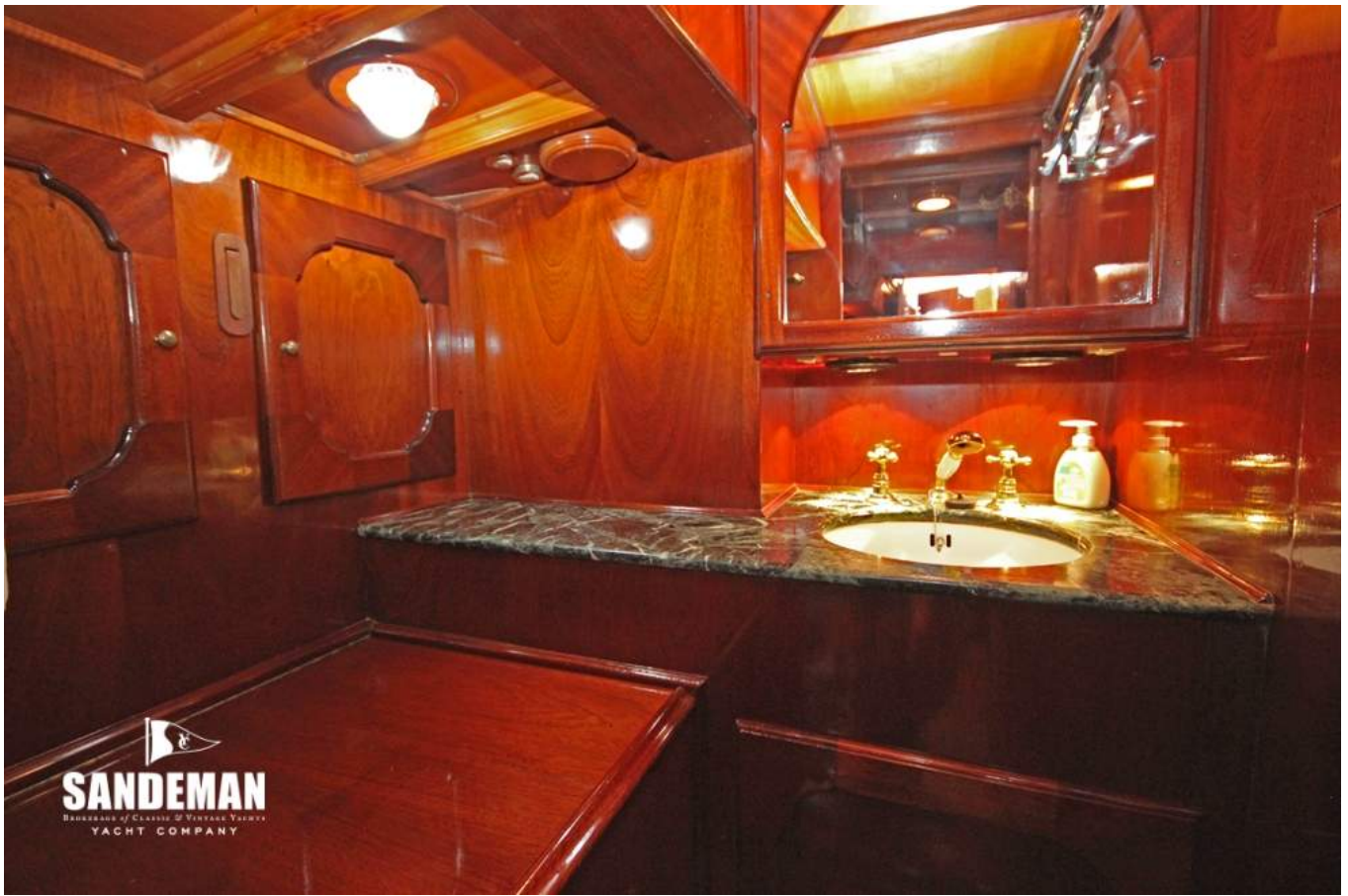






SANDEMAN
BROKERAGE OF CRAFTED & CUSTOMER YACHTS
YACHT COMPANY









24,8 m Havskryssare

O. R. Wiberg

Skala 1:50

AGNETE

Part	Area	Volume	Weight	Material
Skrovet	11,30	11,30	4,30	
Styrbord	11,30	11,30	4,30	
Styrbord	11,30	11,30	4,30	
Styrbord	11,30	11,30	4,30	
Styrbord	11,30	11,30	4,30	
Styrbord	11,30	11,30	4,30	
Styrbord	11,30	11,30	4,30	
Styrbord	11,30	11,30	4,30	
Styrbord	11,30	11,30	4,30	
Styrbord	11,30	11,30	4,30	

VIKINGEN MÄTTNING

GRÄNSLINJE	11,30	120	11,30	120
MECAN	11,30	350	11,30	350
FRONT	11,30	570	11,30	570
REAR	11,30	570	11,30	570

