

BILL TRIPP JR / ABEKING & RASMUSSEN 55 FT BERMUDAN CUTTER 1965/2023



Specification

DANCER (EX AVENIR)

BILL TRIPP JR / ABEKING & RASMUSSEN 55 FT BERMUDAN CUTTER 1965/2023

Designer	William H. Tripp, Jr.	Length waterline	39 ft 0 in / 11.89 m	Engine	Beta Marine 60 hp Diesel
Builder	Abeking & Rasmussen	Beam	13 ft 9 in / 4.2 m	Location	Spain
Date	1965	Draft	8 ft 6 in / 2.6 m	Price	EUR 475,000
Length overall	55 ft 0 in / 16.76 m	Displacement	22 Tonnes		
Length deck	55 ft 0 in / 16.76 m	Construction	Welded 5054 aluminium		

These details are provisional and may be amended

Specification

BROKER'S COMMENTS

DANCER has Bill Tripp Jr's distinctive and very attractive style written all over. His name means that sailing performance comes guaranteed; after all, she's a slightly smaller design sister to Huey Long's incredibly successful ONDINE II, also built by master yacht builders Abeking & Rasmussen in aluminium. In recent decades blue water performance cruising has been DANCER's calling, and she does this with comfortable aplomb. Always well maintained and upgraded during 35 years of previous ownership, DANCER's current owner since 2022 has fastidiously refitted the aluminium sloop to the extent that very few items of systems and equipment date from earlier than 2023. DANCER is well set for many more miles of ocean voyaging and/or family cruising and classic racing.



• SANDEMAN YACHT COMPANY •
• Brokerage Of Classic & Vintage
Yachts •

www.sandemanyachtcompany.co.uk

BILL TRIPP JR / ABEKING & RASMUSSEN 55 FT BERMUDAN CUTTER 1965/2023

Specification

REFITS

2023

- Deck sanded, repainted and 2 coats of KiwiGrip
- Hull abraided, 3 x coats of primer and repainted 3 x white AWL CRAFT
- New boot stripe Gold
- A&R side lines repainted Gold
- Name repainted Gold
- Boom repainted white AWL CRAFT
- Welding and installation of aluminum tube for Bow thruster
- Welding and installation of new transducer bases
- Welding and installation of new anchor chain box
- Welding and installation of reinforced windlass plate
- New supporting plates for 24 V alternator
- New housings for stainless steel Bimini structure
- New stainless steel Mantus anchor support
- Polishing of all stainless steel
- Pulpit dismounted, restored and buffed and polished

- Wind generator pole sand blasted, primed, painted with 2 coats of AWL CRAFT
- All winches maintained and greased
- All deck wood elements restored and varnished with 8 coats of AWL WOOD
- New Stainless steel Bimini top structure with Sunbrella cover
- All new standing and running rigging
- All new electrical systems
- All new navigation systems
- All new memory foam and upholstery for berths and settees
- All new memory foam and Sunbrella covers for cockpit cushions
- All remaining equipment new in 2023 is marked thus below

2014

- Re-engined with current unit
- Hull refinishing
- Many equipment upgrades

Specification

HISTORY

ABEKING & RASMUSSEN BUILD NO. 6057

DANCER's first owner, Pauline Seipp Goltra/ Armstrong, was a veteran of the Chicago-Mackinac Race from the late 1930s together with her first husband, foundry entrepreneur Bill Goltra who died in 1960. She had expected to cross the July 1964 race start line with her shiny new AVENIR (II) - now DANCER - but for some reason, despite being documented by US Coast Guard in 1964, the boat was delivered late; very late: in fact, not until 1965. Luckily this rather remarkable lady for the time - whose 1987 Chicago Tribune obituary headline was "Pauline Armstrong, foundry operator and yacht skipper" - still had the previous AVENIR, a 41 ft Rhodes Bounty, for the Lake Michigan classic.

Given the unprecedented success of Bill Tripp Jr's 1957 ONDINE II design for Sumner "Huey" Long - Yachting magazine editor Bill Robinson described her as, "the sailingest yacht in the world... in a hurry to get places ever since she was launched." - it might seem a no-brainer to commission a slightly shorter copy, but there was of course plenty of designer choice. Thank goodness Mrs Goltra at design commission, Mrs Armstrong at delivery, chose Bill Tripp Jr; the result is a superb boat.

In 1973 Pauline Armstrong donated AVENIR (II) to Kings Point Merchant Marine Academy as a training vessel and seemingly retired from yachting. She was sold by the Academy after about three years, and during the remainder of the 1970s and to 1986 passed through a number of short-term ownerships, and name changes: CAPTIVE, AVENIT, SEQUOYAH, SLOW DANCER.

From December 1986, as DANCER, the long period of stable ownership that every yacht benefits from began. Jeanette Denby and Jim Forrest cruised DANCER extensively - over 125,000 miles just two-up, the last twenty years in the Pacific - always attending to her maintenance and upgrade needs, until they laid her up in New Zealand during the Covid pandemic, with transfer to current ownership taking place in 2022.

©2025 Iain McAllister/ Sandeman Yacht Company Ltd.

Specification

CONSTRUCTION

- Welded 5054 aluminium hull
- Keel 3/8 in (9 mm)
- Hull and deck 5/16 in (8 mm)
- Cockpit; teak carpentry and decking (all new 2002/ 2023)
- Teak capped toerails
- All fasteners isolated from hull

Specification

DECK LAYOUT, EQUIPMENT, AND GROUND TACKLE

SUMMARY

- 'KiwiGrip' painted deck
- Varnished teak caprails, stowage boxes, and trim
- Chromed stanchions

FROM AFT

AFT DECK

- Chromed custom fairleads port and starboard
- Fairleads have eyes for block attachment
- Associated A&R pattern chromed mooring cleats
- Liferaft at pushpit in new custom stainless steel mount
- Painted aluminium wind generator pole
- Raised, varnish framed lazarette hatch; solar vent
- 2 x Barient 30 stainless steel runner winches on stainless steel plinths
- Associated A&R pattern chromed cleats at aft cockpit coaming

COCKPIT

- Deep with after part dedicated to helm
- Raw teak grating sole
 - Aluminium varnished teak capped coamings
 - Teak laid helm seats port and starboard aft
 - Lockers within
 - Kobelt throttle in aft bulkhead (new cables 2023)
 - Chromed Edson steering pedestal and binnacle
 - Console for nav displays and bowthruster control
 - Wide 44 in diameter stainless steel wheel
 - Athwartships teak laid platform bench, open under aft
 - Harken mainsheet blocks
 - Chromed Barient 27 ST mainsheet winch
 - Associated A&R pattern chromed cleats
 - Fore and aft teak laid benches; stowage under
 - Heavy duty stainless steel bimini frame over
 - Sunbrella bimini
 - Beta engine panel
 - Shore power sockets
- Barient stainless steel sheet inwches outboard of cockpit coaming
- 2 x 36 self-tailing primaries [size similar to Harken 65]

- 2 x 32 secondary
- 1 x 21 self-tailing genoa furling (to starboard)

PILOT HOUSE WITH HARD DODGER

- Varnished teak trim
- Main companionway
- Folding glazed door
- Sliding hatch
- B&G repeaters port and starboard at bulkhead
- Foam core epoxy/glass companionway hood with Lexan window
- Chromed mushroom vent port aft
- Chromed dorade vent starboard forward
- Stainless steel/ chromed handrails port and starboard
- Stainless steel boom gallows
- 5 x Opening bronze port lights

SIDE/ MID DECKS

- Custom 1½ in stainless steel genoa tracks port and starboard
- Internal scupper drains with gratings
- Varnished stowage and gas bottle locker boxes
- Custom stainless steel cradle for hard bottom tender
- 2 x Chromed ventilators
- 4 x Deck prisms

MAST BASE

- 2 x Barient 27
- 1 x Barient 21
- 1 x Selden main halyard electric winch (2023)

FOREDECK

- Spinnaker pole stowage to port
- Deck prism
- Raised wooden forehatch
- Sliding hatch
- Hard spray hood/ wind scoop
- 2 x Mooring cleats on centreline
- Staysail furler
- Jib furler
- 2 x Bow rollers
- Stainless steel fairleads port and starboard
- Stainless steel pulpit

GROUND TACKLE

- Italwinch 24 V 1500 anchor windlass (2023)
- Switches by winch and in cockpit
- 1 x Chain gipsy; 1 x warping drum
- 100 m of 10 mm anchor chain (2023)
- Mantus 2 39 kg Bower anchor stowed fwd of stemhead (2023)

Specification

ACCOMMODATION AND DOMESTIC EQUIPMENT

GENERAL

- Sleeps 7 (2 x double; 3 x single)
- or 5 x singles
- Solid teak sole
- Sole covering Italian woven vinyl 3mm (also offers sound insulation)
- Lift out panels for complete access to bilges and tank clean-out ports
- LED lighting throughout (2023)

FROM AFT

- Fold-up extra work surface/ chopping board (2023)
- 5 x Opening ports
- 5 x Deck head lights

DOWN 2 x STEPS FROM PILOT HOUSE

SALOON TO PORT

- L-shape sofa
- A&R Gimballed drop leaf table
- 2 x Bulkhead lights

PILOT HOUSE

- 3 x Steps down from companionway to sole
- 5 x Opening ports
- 5 x Deck head lights

To Starboard

- Beta Marine engine instrumentation
- Weems & Plath barometer
- 2 x Ship's electrical panels
- Quarter berth
- Comfortable chair
- Pull out, gimballed tray for a laptop
- Navigator's stool
- Forward facing chart table
- B&G GPS Plotter
- TankTender gauge
- Victron energy monitor
- B&G VHF Radio
- Weems & Plath clock
- Furuno GPS
- Vespermarine AIS

To Port

- Galley
- Custom stainless steel counter top surfaces
- Force 10 gimballed 3 x burner hob with oven (2023)
- All gas pipes new 2023
- Safety bar
- 2 x Deep stainless steel sinks
- Food, pot and utensil lockers (new fire proof doors 2023)
- Top loading fridge freezer
- 2 x Independent Sea Frost 12 V units
- with SS evaporator plates
- Cold water tap built into refrigerator

- 1 x Deckhead light
- 2 x Opening ports

DOUBLE CABIN TO STARBOARD

- Double berth; lockers under
- Hanging locker
- 3 x Lockers
- Upholstered banquette
- Provision for a cot berth (not fitted)
- 1 x Bulkhead lights
- 1 x Deckhead light
- Deck prism in deckhead

WC COMPARTMENT TO STARBOARD

- Blakes manual sea toilet
- Sink
- Mixer tap
- Shower with teak sole grating
- Lockers
- 2 x Bulkhead lights
- 1 x Deckhead light
- 1 x Deck prism in deckhead

FORWARD TO PASSAGE CABIN

- Large double berth to starboard; lockers under
- Sofa berth and pilot berth to port; lockers under
- Book cases
- Large lockers port and starboard
- 2 x Bulkhead lights
- 1 x Deckhead light

WATERTIGHT DOOR TO FO'C'SLE

- Tool locker to starboard
- Sail bin to port
- 2 x Deckhead lights
- Large single berth to port; lockers under
- Large, well lit sliding forehatch in deckhead
- Access forward to chain locker

Specification

RIG, SAILS, AND CANVASWORK

RIG

- Aluminium mast by C&C (1968)
- Double spreader, tapered, air draft 75 ft / 23 m
- Selden 24 V electric halyard winch (2023)
- Winch switches at mast base and at cockpit
- Custom aluminium boom
- Sunbrella lazy bag (2023)
- Southern Spars carbon spinnaker pole 2000
- Profurl N-52 furler for genoa
- Harken MK4 furler for staysail (2014)
- Harken Main and Spinnaker track (2007)
- Harken mainsail luff cars (2023)
- Standing and running rigging all new 2023
- Navtech-22 Hydraulic backstay tension adjusters (2020)
- Spectra running backstays (2023)

- Lazy jacks (2023)

SAILS

- Mainsail: Dimension Polyant Hydranet tri-radial (2015)
- Staysail: Dimension-Polyant Hydra Net (2014)
- Genoa: Maine Sailing Partners Hydranet 115% tri-radial (2005)
- Spinnaker: Maine Sailing Partners 1.5 oz tri-radial symmetrical; ATN sock (1997)
- Spinnaker: 3/4 oz crosscut symmetrical (may require repair)
- Hood multi purpose genoa (Code 0) with sock
- Storm trysail (never used)

CANVASWORK

- Sunbrella bimini (2023)
- Sunbrella awnings attachable to boom (2023)

Specification

MECHANICAL, ELECTRICAL, AND TANKAGE

MECHANICAL

- Victron SmartShunt battery monitor 500 Ah

Propulsion

- Beta Marine 60 diesel engine 56 hp (2014)
- Borg Warner 2.5:1 velvet drive gear box
- Aqua Drive CVA flexible drive coupling
- Aquamet 22 1½ in / 38 mm shaft
- PYI shaft seal
- 3-Bladed feathering propeller
- Spur line cutters
- Racor 2 micron filter
- Remote oil filter and 1 micron bypass oil filter
- Prelube and oil change pump

Generator

- Kubota 16 hp diesel driving 12 V generator (2012)
- 10 Gal/m hydraulic pump and 120 A alternator with Balmar regulator
- 2 x Spare alternators for Kubota
- Racor 2 micron filter for Kubota

ELECTRICAL

- All new in 2023
- 12 V and 24 V DC systems
- Flexible Enacom solar panels on bimini; total power 320 W
- Associated electrical connections and regulator
- Silent Wind PRO wind generator 12 V 420 W
- Associated electrical connections and WiFi regulator
- 6 x Mastervolt batteries 6 V 260 Ah; all new cables and connections
- 50 Ah Engine start battery
- 24 V Batteries for electric winch, windlass and bow thruster
- Victron SmartSolar MPPT 15070 charge controller

- Victron Phoenix Smart battery charger
- Victron Cerbo GX processor
- Victron GX Touch with direct cable
- 12 V Alternator regulator
- Digital voltmeter 24 V
- Victron Phoenix inverter 1200/2400 W
- 3 x 220 V sockets

TANKAGE AND ASSOCIATED

Fuel

- 6 US Gallon 23 L fuel day tank with 30 micron Racor filter
- Electric pump for fuel polishing
- 130 Gal / 492 L fuel tank integral in keel

Water

- 300 Gal / 1136 L fresh water in 2 x tanks integral in keel
- FDA approved coating for potable water
- Spectra 18 Gal/ 68 L / hour 12 V watermaker new Shurflo pumps (2017)
- Clark watermaker (pump rebuilt 2021)

Hot Water

- 20 L Boiler 750w with blending valve (2023)

Associated

- Viking Power 12 V sump pump
- New sump macerator pump with spare

OTHER

- 24 V Bow thruster (2023)
- Webasto SOD TT-EVO Boat 12v Diesel heater (2023)
- 3 x Webasto Sydney 12 V blower heaters (2023)
- Webasto controller (2023)
- 8 x Caframo scirocco cabin air circulation fans

Specification

NAVIGATION AND COMMUNICATIONS

NAVIGATION

- White magnetic steering compass
- #### Full Simrad Suite (2023)
- 2 x Zeus 3s, cabin and cockpit
 - 2 x Triton 2 Digital displays
 - 1 x Triton2 Speed/Depth/Wind pack
 - ZG Antenna
 - Triton pilot controller
 - WR Wireless autopilot control

- NAC-3 autopilot core pack
- HALO20+ Radar
- Forward scan transducer kit
- All New cables, ports, expansion kits for NMA 2000, AIS ecc.
- Mediterranean charts

COMMUNICATIONS

- New B&G V60-B marine VHF (2023)
- Navico 1720 VHF antenna (2023)

Specification

SAFETY

- Seago Sea Master 6-Person canister liferaft (2023)
- 11 steps emergency ladder
- Electric horn (2023)
- LED tricolor and running lights
- Halon automatic fire extinguisher in engine compartment

Specification

OTHER EQUIPMENT

- 3D 270 tender; hyphalon with aluminium hull (2023)
- Tohatsu MFS 9.9/15 hp modified outboard motor (2023)
- Tender secured upright on stainless steel rack mid deck
- (Can be deflated, turned and lashed to rack for low profile stowage when offshore)
- Bauer Dive compressor, hydraulic drive
- Raritan ElectroScan waste water treatment system (2015)
- Awnings and rain catchers
- Spares
- Rocket stand-up inflatable paddle board & paddle (2019)

Disclaimer

These particulars have been prepared from information provided by the vendors and are intended as a general guide. The purchaser should confirm details

of concern to them by survey or engineers inspection. The purchaser should also ensure that the purchase contract properly reflects their concerns and specifies details on which they wish to rely.

BILL TRIPP JR / ABEKING & RASMUSSEN 55 FT BERMUDAN CUTTER 1965/2023

Specification
GALLERY































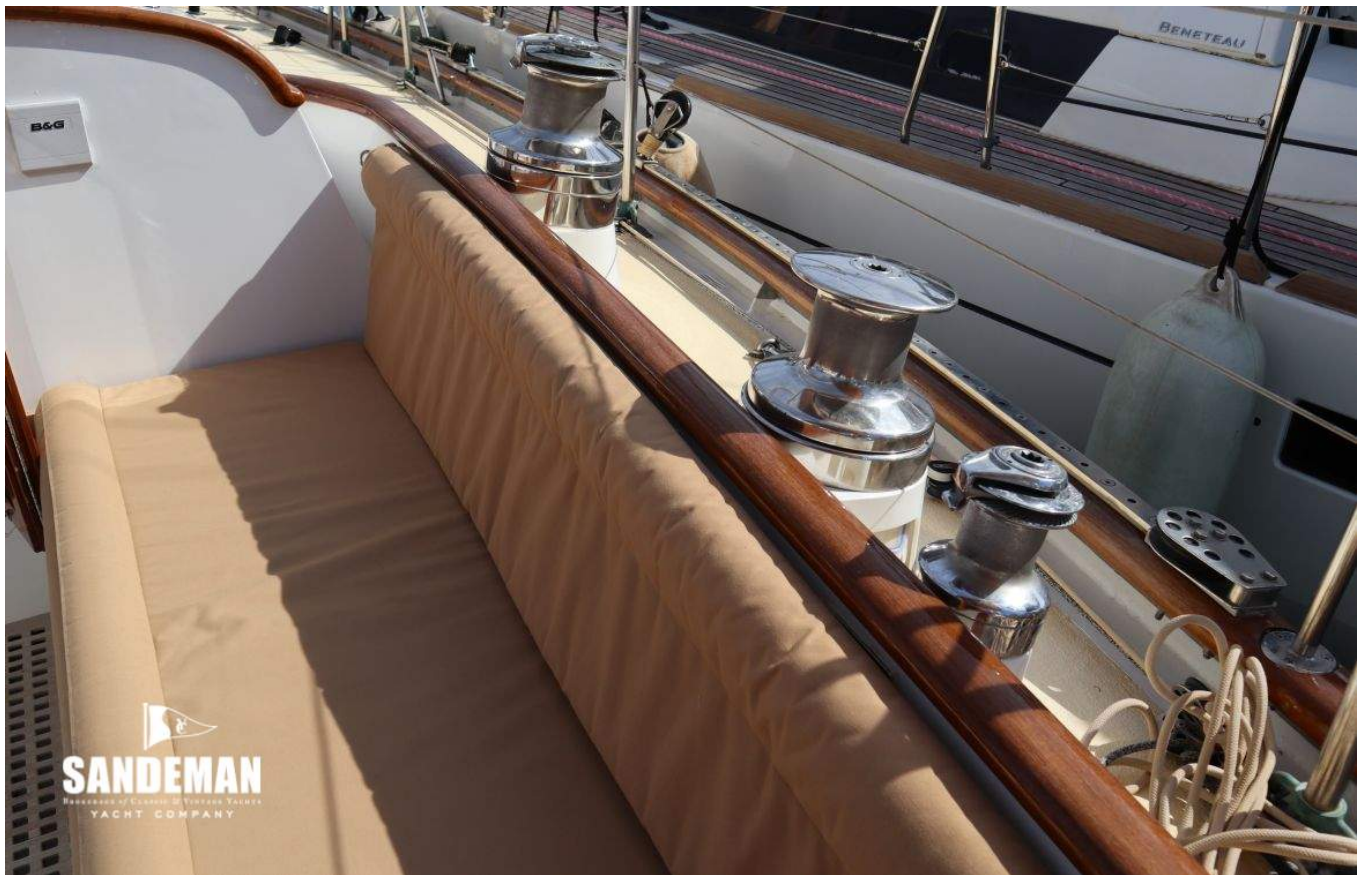









SANDEMAN
SANDERSON & CLARKE'S YACHTS
YACHT COMPANY






SANDEMAN
BROKERAGE OF CLASSIC & VINTAGE YACHTS
YACHT COMPANY




SANDEMAN
SANDERSON OF LONDON & BOSTON YACHTS
YACHT COMPANY














SANDEMAN
SALES & SERVICE OF LUXURY YACHTS
YACHT COMPANY















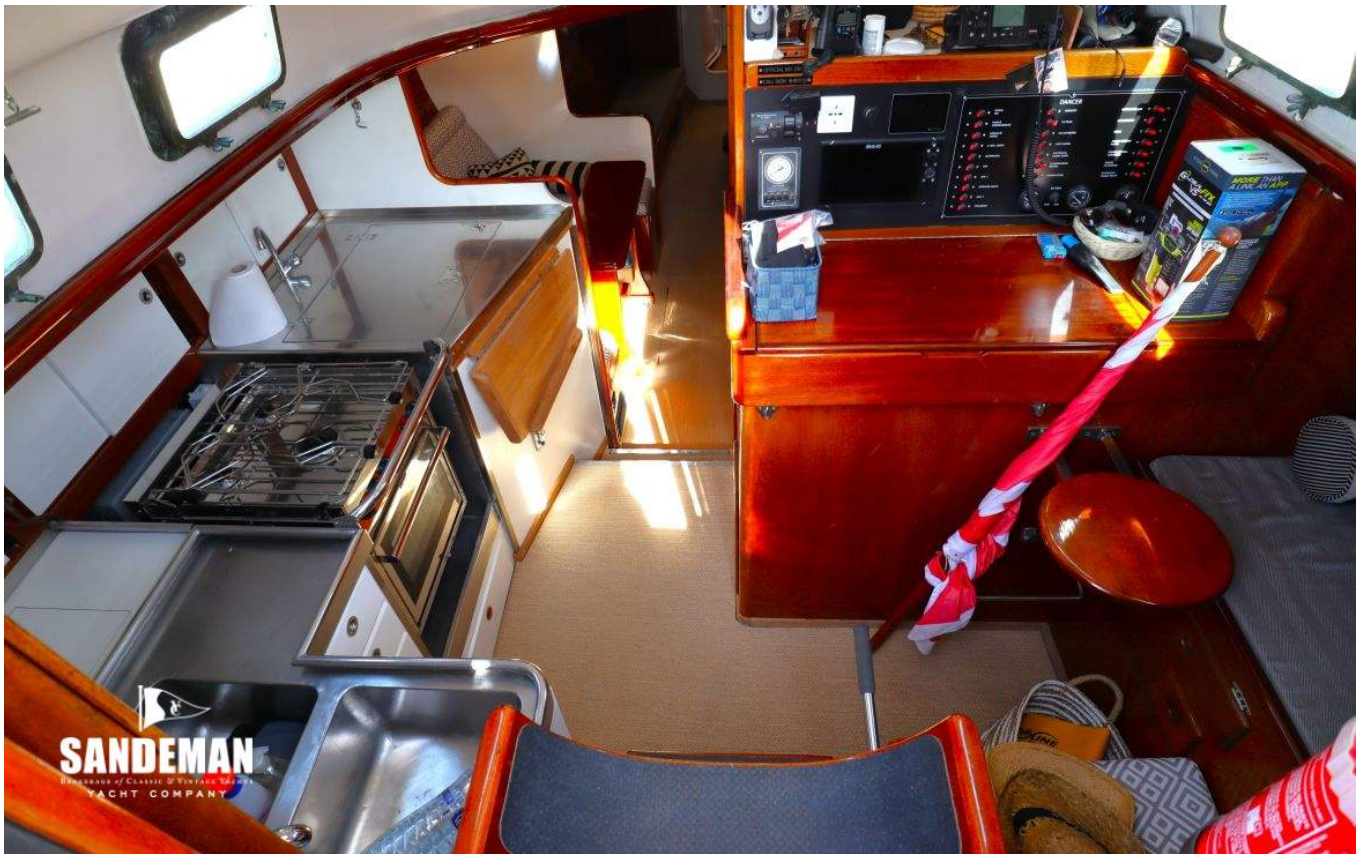



SANDEMAN
SANDERSON OF CLASSIC & RACING YACHTS
YACHT COMPANY






SANDEMAN
YACHT COMPANY






SANDEMAN
HANDS ON CLASSIC & VINTAGE YACHTS
YACHT COMPANY










SANDEMAN
BOATWORKS • CRAFTSMAN • YACHTS • INTERIORS
YACHT COMPANY



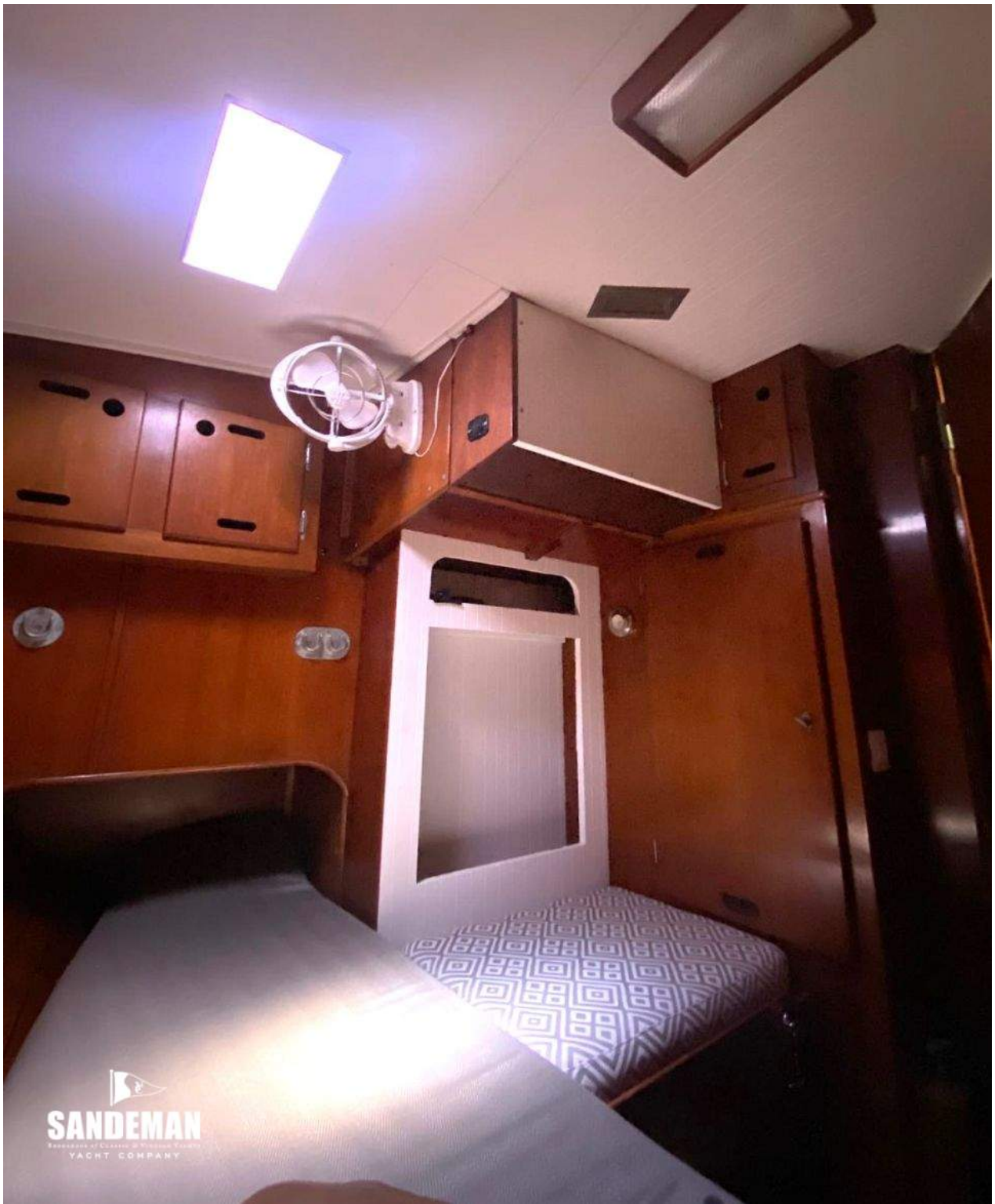


SANDEMAN
BOATWORKS LTD. 1000 W. 10th Ave. Suite 100
CALGARY, ALBERTA T2P 1C1
T402T COMPANY





SANDEMAN
HANDCRAFTED CLASSIC & LUXURY YACHTS
YACHT COMPANY




SANDEMAN
SANDERSON OF CLASSIC & MODERN YACHTS
YACHT COMPANY



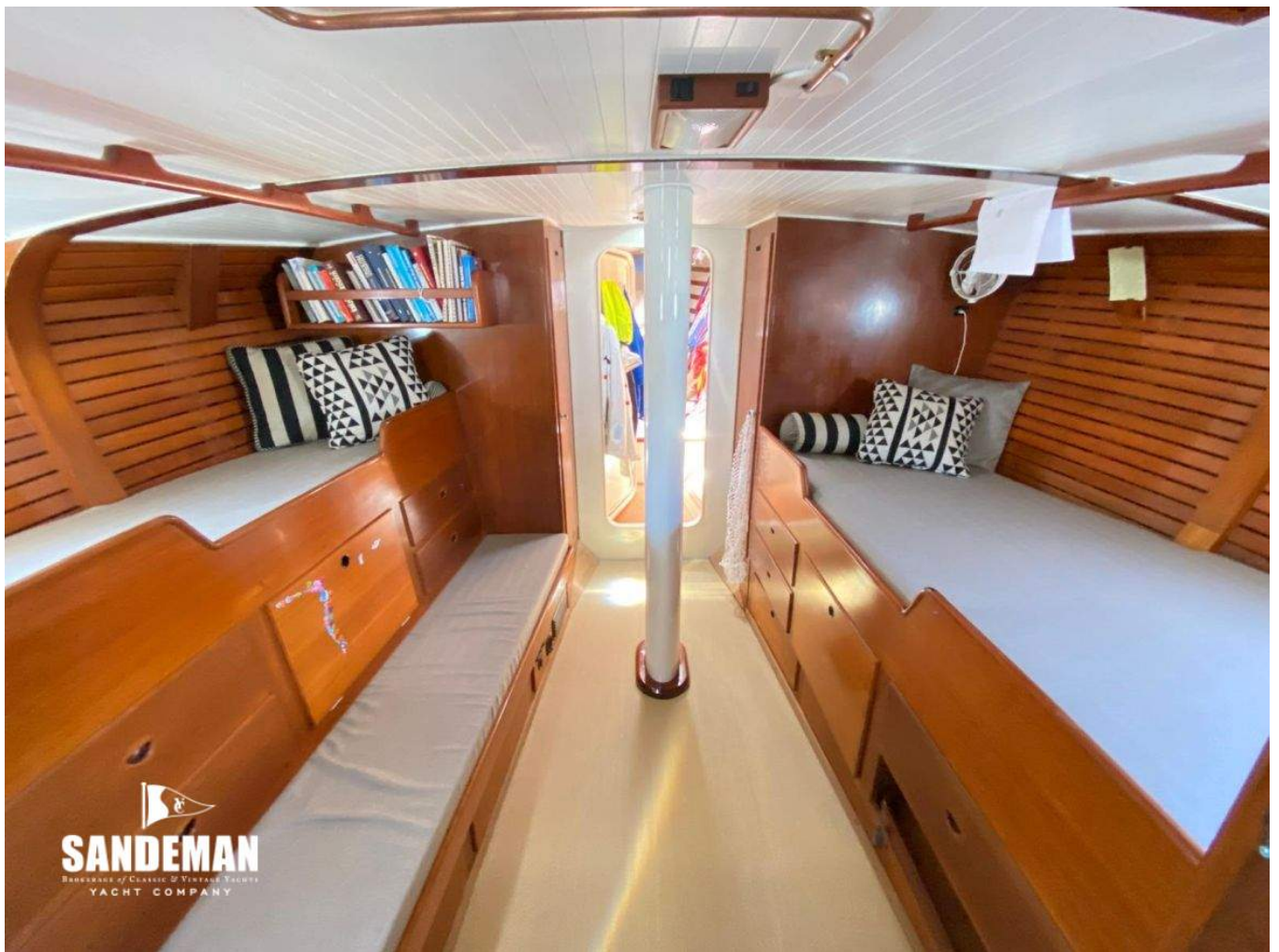

SANDEMAN
BASEBORN • CLASSIC • FINEBOAT YACHTS
YACHT COMPANY











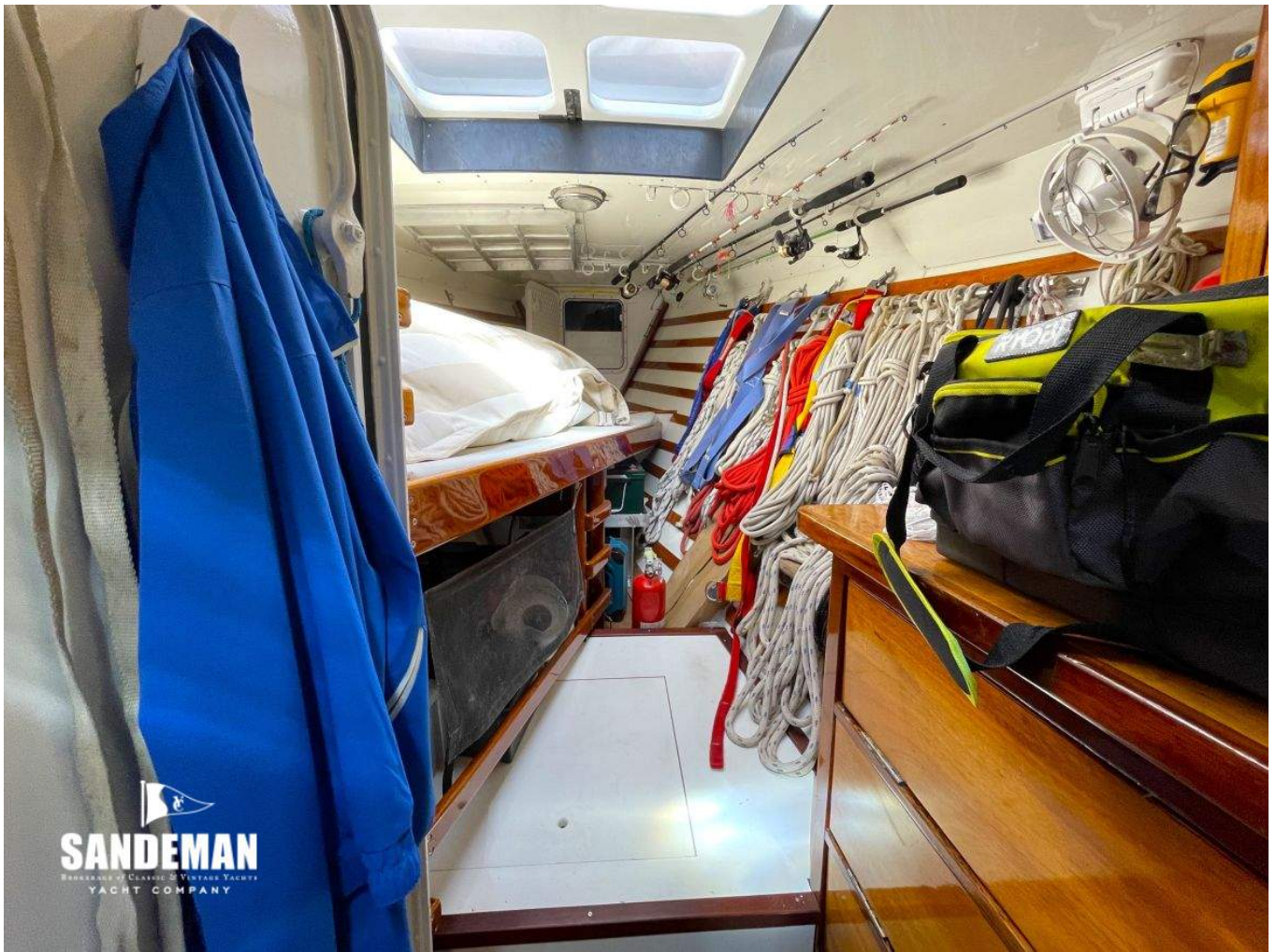



SANDEMAN
BROKERAGE OF CLASSIC & VINTAGE YACHTS
YACHT COMPANY




SANDEMAN
BROKERAGE OF CLASSIC & VINTAGE YACHTS
YACHT COMPANY





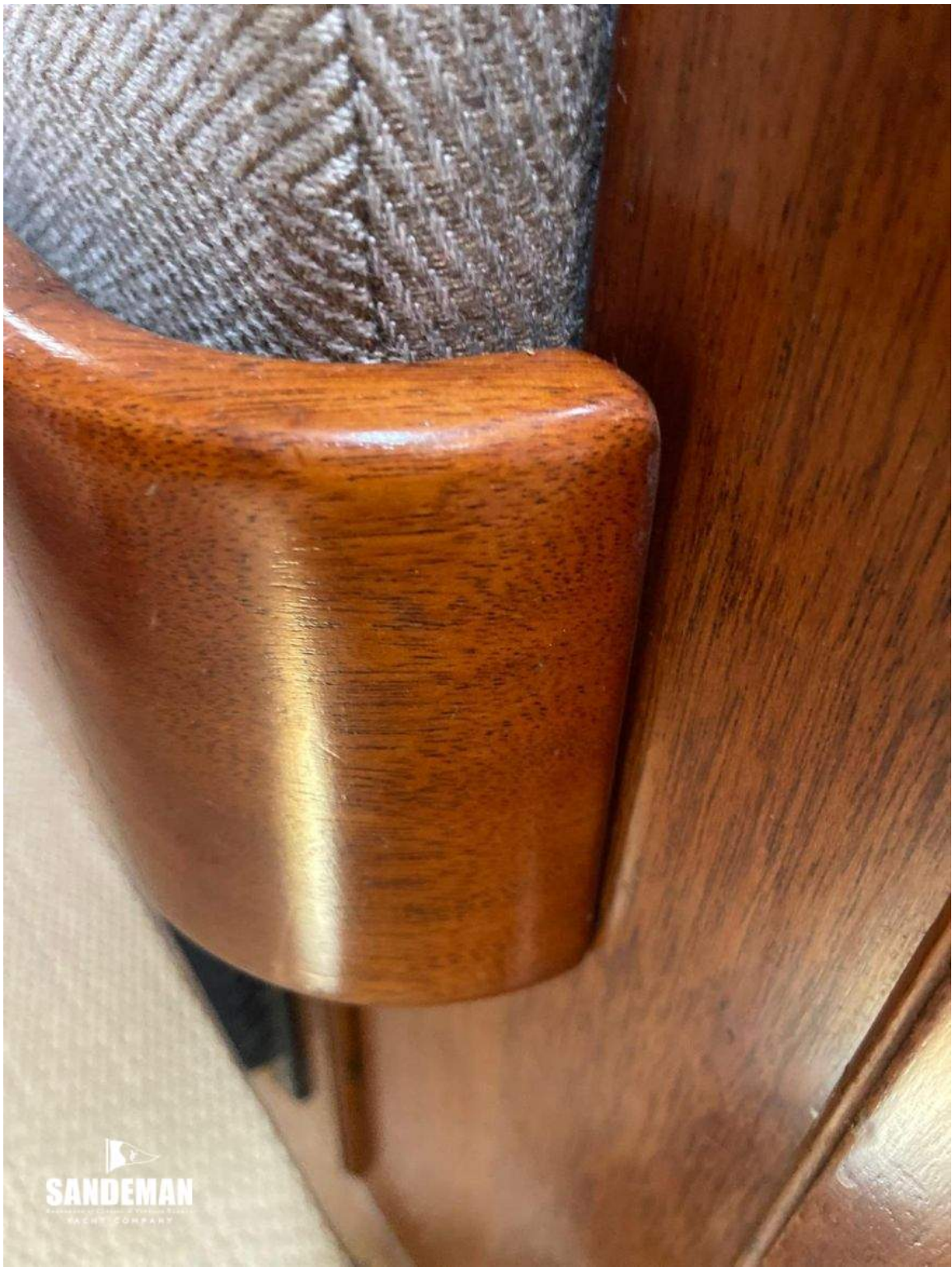

SANDEMAN
BOATWORKS & CLASSIC & VINTAGE YACHTS
YACHT COMPANY

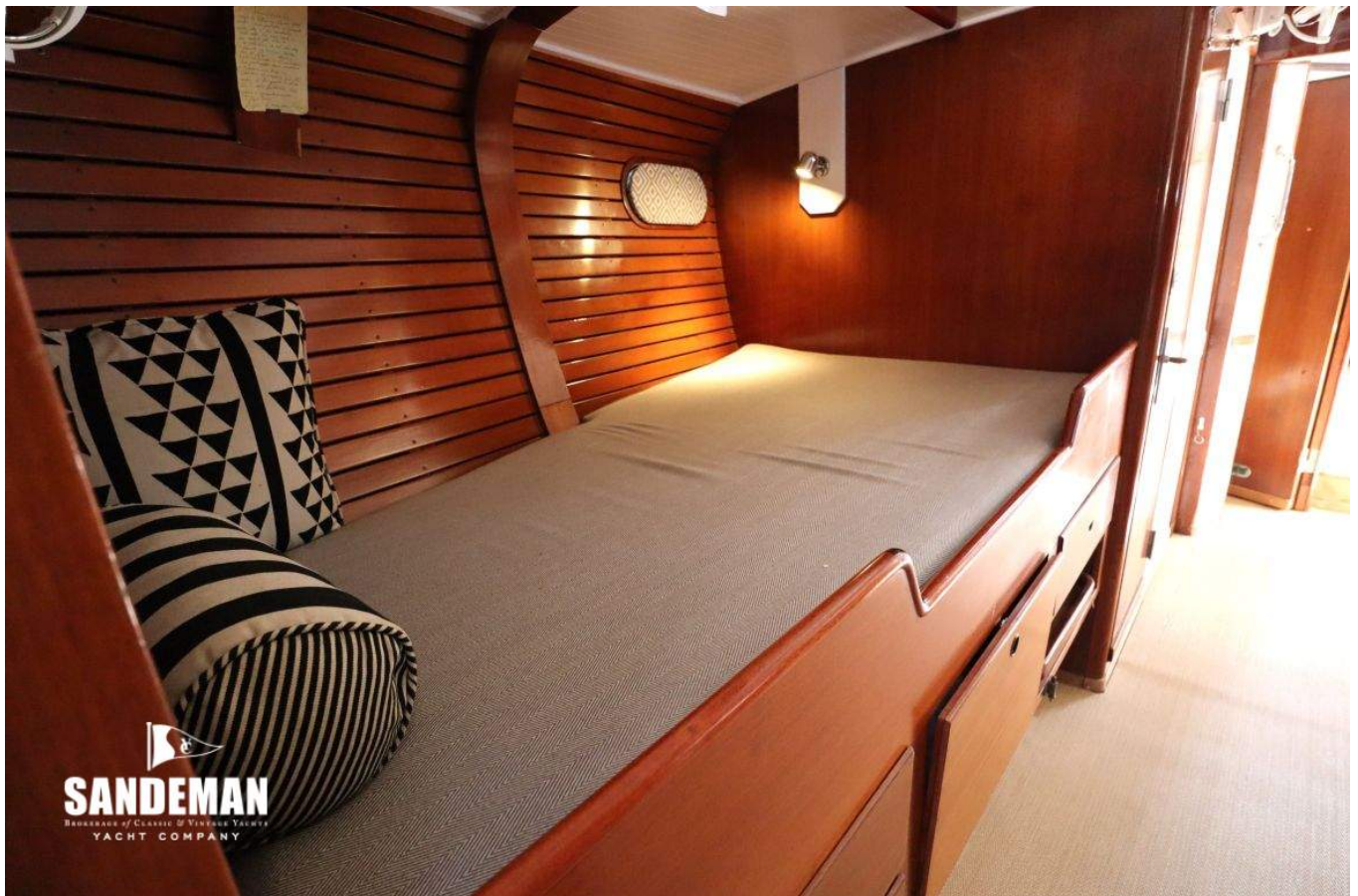



SANDEMAN
DESIGNER & CUSTOMER SERVICE
YACHT COMPANY




SANDEMAN
RENEWERS OF CLASSIC & VINTAGE YACHTS
YACHT COMPANY












SANDEMAN
REGENERATION OF CANADIAN & YACHTING TRADITION
YACHT COMPANY






SANDEMAN
BOATMAKERS OF CLASSIC & VINTAGE YACHTS
YACHT COMPANY



SANDEMAN
SALES & SERVICE
YACHT COMPANY



