

JOHAN ANKER 46 FT GAFF RIGGED 9 METRE R 1907 - SOLD



Specification

PANDORA

JOHAN ANKER 46 FT GAFF RIGGED 9 METRE R 1907

Designer	Johan Anker	Length waterline	32 ft 5 in / 9.89 m	Engine	Vetus 3.28 Diesel 2012
Builder	Anker & Jensen # 52	Beam	9 ft 5 in / 2.88 m	Location	Norway
Date	1907	Draft	6 ft 7 in / 2 m	Price	Sold
Length overall	52 ft 6 in / 16 m	Displacement	11 Tonnes		
Length deck	45 ft 11 in / 13.99 m	Construction	Carvel mahogany on oak frames		

These details are provisional and may be amended

Specification

BROKER'S COMMENTS

PANDORA is probably the only gaff-rigged 9mR now in existence. Designed by Johan Anker and built by the famous Anker Jensen yard, she remains impressively original. Of all the famous designers of his era Anker was probably the best helmsman. It would seem his understanding of what was needed to make a boat go fast and his preoccupation with the subtle beauty of lines revealed a purity - rather understated, which nevertheless can take your breath away. With short Nordic 5 months seasons and wintering in tented storage she has been very well looked after and as important, is a most beautiful classic yacht to the eye of any beholder – and a dream to sail. Her current owner - for eight seasons - has carried out extensive works; all major repairs having been done by a professional boatyard. She has moreover been maintained to a high standard, especially the hull, bright work and woodwork.



• SANDEMAN YACHT COMPANY •  
• Brokerage Of Classic & Vintage  
Yachts •

[www.sandemanyachtcompany.co.uk](http://www.sandemanyachtcompany.co.uk)

JOHAN ANKER 46 FT GAFF RIGGED 9 METRE R 1907

---

Specification  
VAT UNPAID

VAT is unpaid on

this yacht

---

Specification  
HISTORY

PANDORA is probably the first R boat in the World, built to the first R Rule of 1907. Johan Anker was one of the architects behind this rule, which was agreed upon in London in late 1906 and operating from 1907. During the winter 1906 / 07 the Anker & Jensen shipyard in Norway had 11 big boats built; 8 of them to the new rule. PANDORA was also the first to be completed and was launched in February 1907. During her 100 year – nay 108 year history she has only had 8 owners; one of whom was for 30 years and

another for 28 ! This is probably one of the reasons why she is still very original and in great shape. She was originally gaff rigged, but then rigged as a Bermuda in 1921, and stayed that way for about 80 years, winning several races meanwhile. In 2001 she was re rigged back to gaff, and awarded the special prize for “Best sailing yacht” at Risør woodenboatfestival in 2007. Full historical information including the identities of all her owners, is available as well as historic photographs of the boat.

---

Specification  
CONSTRUCTION

Carvel mahogany on grown oak frames (retaining c 80% of original hull frames and planking)

Teak deck planking 10 mm thick on double plywood, new in 1985, mostly on original deck frames

---

Specification  
ACCOMMODATION AND DOMESTIC EQUIPMENT

The partly original interior from 1907 is of mahogany and Japanese hardwood. Modifications were made in the 1960s. She has accommodation for 6. She has accommodation for 6.

Entering via the cockpit through double opening doors the saloon with single settee berths each side and drop leaf dining table between, lies forward. Aft to port and starboard are single pilot berths. Forward to port is the galley with Techimpex gimballled 2 top burner gas hob and oven (new 2008) to port, Fridge and sink to starboard, also with cupboard stowage. Forward to port is the head - refitted from 2008 in the style of original. A corridor leads forward to the fore cabin with single Vee berths and chain locker beyond.

---

Specification  
RIG, SPARS, SAILS AND CANVAS

- In 2003 converted back to gaff rig, although boom slightly shorter than the original
- All wire, rigging details, wood blocks and ropes new
- Original (hollow) mast from 1912 reshaped and restored
- New boom and gaff boom
- New booms for topsail and balloon sail
- All rigging wires / ropes maintained and changed when worn

- Sails by Quantum Sails 2002 / 3, maintained and repaired when necessary
- Large jib on roller by Tarpon Seil AS, new 2013, replaces staysail and old jib
- Staysail on roller by Tarpon Seil AS, new 2014
- New sail covers for all sails, also new covers for butterfly hatch skylight 2007

---

Specification  
DECK EQUIPMENT AND GROUND TACKLE

- Original style bronze windlass, new 2008
- Bruce anchor

- 50 metre galvanised 10mm anchor chain

---

Specification

## MECHANICAL ELECTRICAL AND TANKAGE

- Vetus M 3.28 3 cylinder 28 HP, new under warranty for 1 year from 1st Qtr 2012
- Double battery bank
- Start battery
- Bronze 3 bladed propellor and stainless steel shaft new 2008
- Syrefast stainless steel fuel tanks c 90 litre (2003)
- Electric cabling, fuse box, lamps new from 2006

---

Specification

## NAVIGATION COMMUNICATIONS AND ELECTRONICS

- GPS / chart plotter / depth sounder, new 2010

---

Specification

## SAFETY

- 2 x Separate electric bilge pump systems
- Manual bilge pump new 2009

---

Specification

## REFIT AND RESTORATION

- 2003
  - Stern / aft restored to original shape and length
- 2006 / 7
  - New wooden keel and keel bolts
  - Lower parts of 4 sets of frames in area of mast renewed
  - Mast foot
  - Wooden structures
  - Floors over wooden keel; stainless (Syrefast) flat steel from frames to structures / floors
  - 2 bottom planks each side towards wooden keel
- 2008
  - New knee and part of stern
- 2010
  - 3 Planks on port side when new fittings for axle and propeller installed
  - Part of fore stem changed and 2 planks on starboard side.
  - Deck restored and caulked
- 2013
  - Stern / transom restored to original shape and length

---

Specification

## VIDEO OF PANDORA

[To see this video please click here](#)

---

Disclaimer

These particulars have been prepared from information provided by the vendors and are intended as a general guide. The purchaser should confirm details of concern to them by survey or engineers inspection. The purchaser should also ensure that the purchase contract properly reflects their concerns and specifies details on which they wish to rely.

---

JOHAN ANKER 46 FT GAFF RIGGED 9 METRE R 1907

Specification  
GALLERY







**SANDEMAN**  
HONOLULU • GLENNVILLE • VENEZIA • YACHTS  
YACHT COMPANY









  
**SANDEMAN**  
MANUFACTURERS OF CLASSIC & VINTAGE YACHTS  
YACHT COMPANY



**SANDEMAN**  
ESTABLISHED IN 1954  
YACHT COMPANY







**SANDEMAN**  
BOOKERS OF CLASSIC & VINTAGE SALES  
YACHT COMPANY





**SANDEMAN**  
YACHT COMPANY













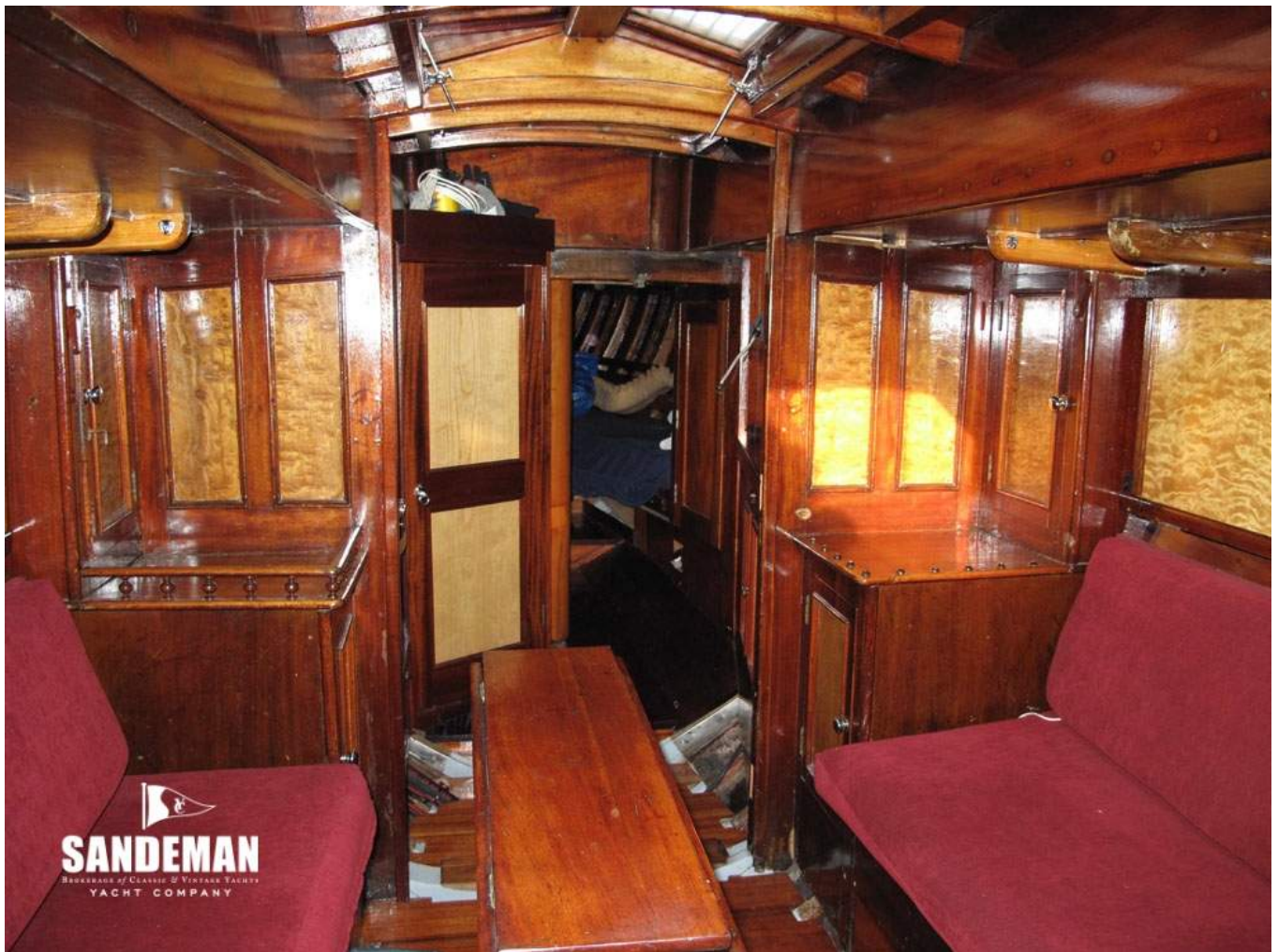




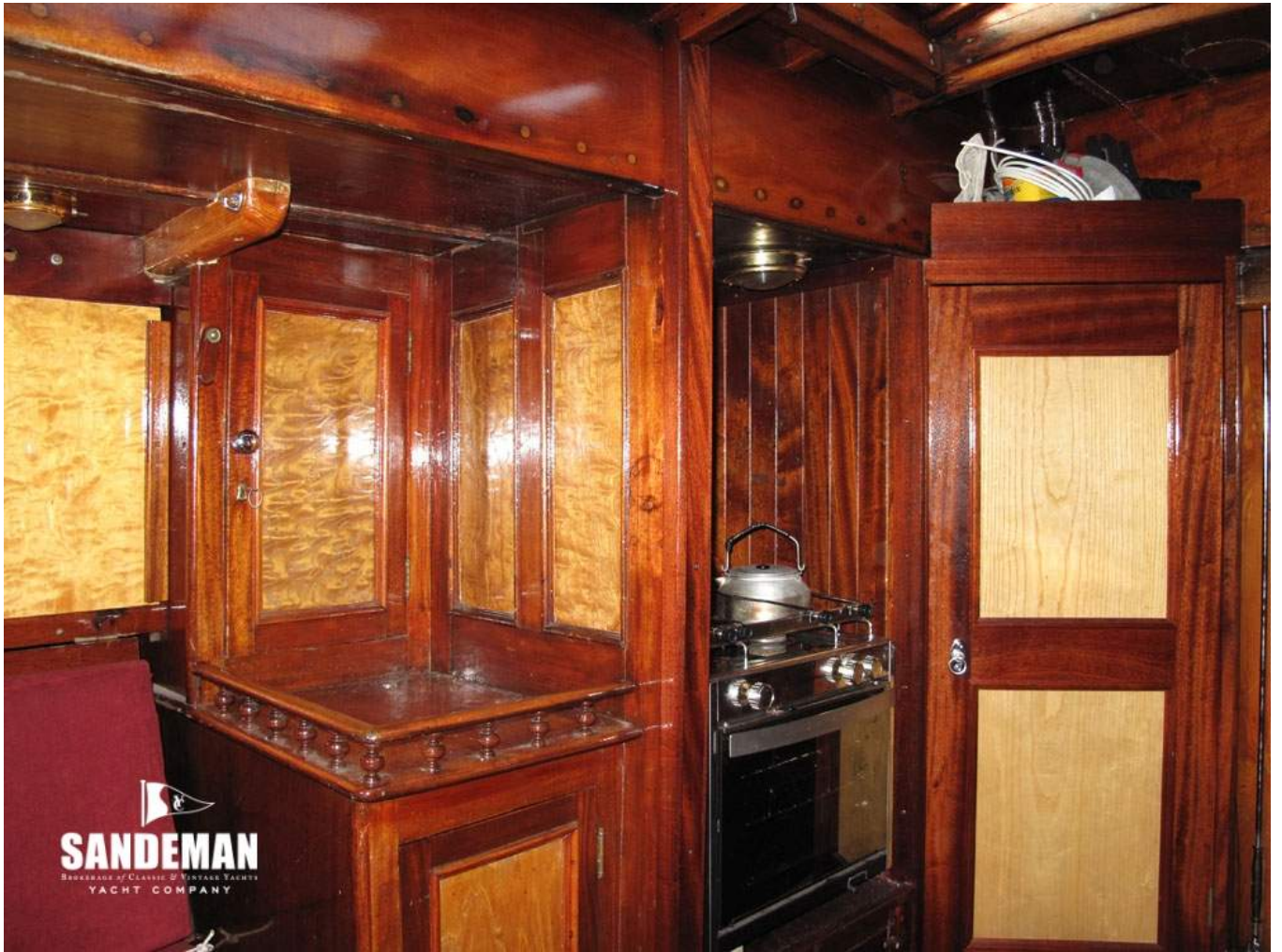
  
**SANDEMAN**  
BROKERAGE OF CLASSIC & VINTAGE YACHTS  
YACHT COMPANY











  
**SANDEMAN**  
DEALER OF CLASSIC & MODERN YACHTS  
YACHT COMPANY



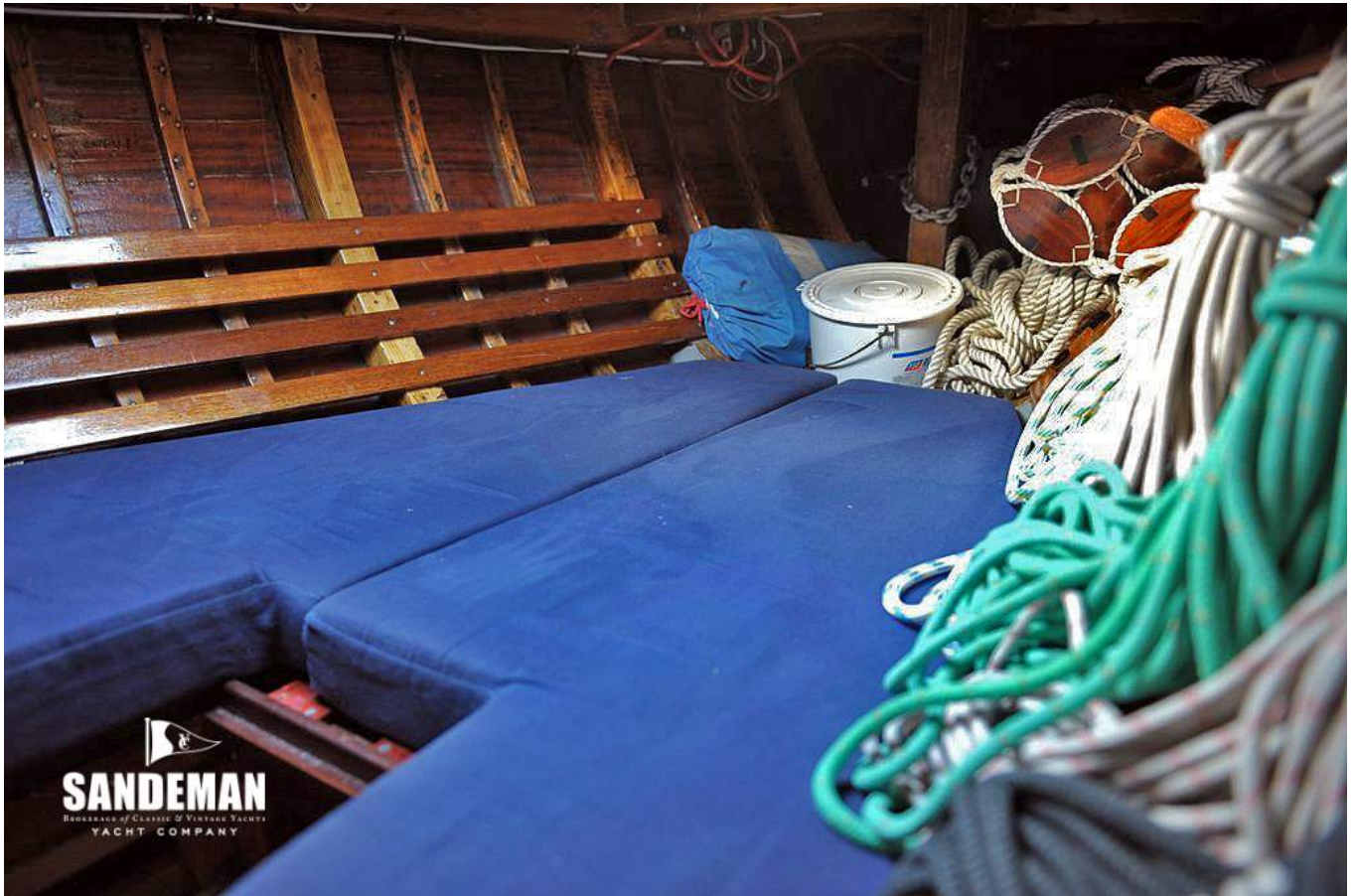
**SANDEMAN**  
BASEBORNEN 17 • CUNEIFO 18 • HONOLULU YACHTS  
YACHT COMPANY





  
**SANDEMAN**  
BASEBORN • CRAFTED • FINEST QUALITY  
YACHT COMPANY





  
**SANDEMAN**  
BOOKERS OF CLASSIC & VINTAGE YACHTS  
YACHT COMPANY



  
**SANDEMAN**  
BOOKERS OF CLASSIC & VINTAGE YACHTS  
YACHT COMPANY









  
**SANDEMAN**  
HERITAGE OF CLASSIC & VINTAGE YACHTS  
YACHT COMPANY



  
**SANDEMAN**  
HERITAGE OF CLASSIC & VINTAGE YACHTS  
YACHT COMPANY







