

LAURENT GILES/ BELTRAMI 60 FT BERMUDAN CUTTER 1956



Specification

PAZIENZA

LAURENT GILES/ BELTRAMI 60 FT BERMUDAN CUTTER 1956

Designer	Jack Laurent Giles	Length waterline	45 ft 0 in / 13.71 m	Engine	Perkins M135 C 135 HP Diesel 2007
Builder	Cantiere Navale V Beltrami Genoa	Beam	14 ft 0 in / 4.27 m	Location	United Kingdom
Date	1956	Draft	9 ft 6 in / 2.9 m	Price	GBP 425,000
Length overall	60 ft 7 in / 18.47 m	Displacement	27 Tonnes		
Length deck	60 ft 0 in / 18.29 m	Construction	Carvel teak planking on acacia frames		

These details are provisional and may be amended

Specification

BROKER'S COMMENTS

Laurent Giles seemed to achieve a seamless transition between traditional and modern styling - it is not surprising that PAZIENZA with her handsome sheer and understated English good looks was down to the last two nominees for the most beautiful boat in France in 2010. In his design philosophy, Giles considered that a yacht should have 'the utmost docility and sureness of manoeuvring at sea, in good or bad weather.' Thus his boats were designed to maintain a steady course with minimal action by the helmsman, yet to respond instantly to the helm if the need arose. He identified PAZIENZA as a 'good example of a comfortable shorthanded cruising boat with a first class performance under power yet able to take part successfully in ocean races. Yachting World in 1957 described her as 'a large cutter into which a great deal of thought has been given to comfort and convenience.' The current owner and family have successfully cruised and raced in Europe and the Caribbean and PAZIENZA is just one of those boats that once seen – she will always stay with you!



• SANDEMAN YACHT COMPANY •  
• Brokerage Of Classic & Vintage  
Yachts •

[www.sandemanyachtcompany.co.uk](http://www.sandemanyachtcompany.co.uk)

LAURENT GILES/ BELTRAMI 60 FT BERMUDAN CUTTER 1956

Specification

2024 REFIT

Topsides repainted

- Hard sand back
- 2 x Undercoat
- 3 x 50/50 Gloss
- 2 x Spray finish topcoat

Undersides

- Hard sand back to remove old anti-foul
- 2 x Underwater primer
- 2 x Antifouling
- Prop repolished
- Keel fridge anodes removed
- Skin fittings replaced
- New anodes and new anode pads on hull

Deck

- Deck fittings removed, restored with new pads and refitted
- Underside stainless fittings to deck fittings removed and repainted
- Aft stay fittings removed and refurbished
- All brightwork varnished - 12 coats

Hull

- All metal stringers wire brushed and repainted
- Lazarette and Lockers repainted
- All metal stringers rubbed back to bare metal and repainted

Systems

- Galley Sink
- Midship bilge outlet
- Forward heads inlet and outlet
- Generator inlet
- Engine inlet
- Aft head inlet and outlet
- Steering removed and serviced

Rig/ sails

- New spreaders made by Noble masts with new stainless fittings
- Mast revarnished - awl grip
- Booms revarnished - awl grip
- New radial cut jib ordered

Accommodation

- Interior redecoration

Specification

HISTORY

It is known that PAZIENZA raced regularly in the Mediterranean in the late 1950s, winning the Giraglia in 1959 with Andrea Giuseppe "Beppe" Croce at the helm. In 1960 she was used as an official yacht to transport important personalities during the Rome Olympics including; it is rumoured the future President Kennedy and his wife Jackie.

Her tall powerful rig makes her ideally suited for both light Mediterranean airs as well as effortless ocean crossings. Since the 1960s PAZIENZA has been raced and sailed

far and wide; winning ocean races as well as classic regattas in the UK and the Caribbean. Her previous owners included Pete Townshend who won Falmouth Classics on a number of occasions. Her present owners since 2004 have raced and cruised extensively, including the inaugural Transat Classique in 2008/9, taking line honours on the leg to Agadir and podium position on the Atlantic leg. PAZIENZA is currently moored on a tranquil berth on the River Dart and is lovingly maintained to the highest standards.

Specification

CONSTRUCTION

- Teak planking on acacia frames with 2 x bentwood frames between each.
- Sawn and bentwood frames throughout fastened
- Acacia principal deck beams with spruce intermediate deck beams
- New plywood sub deck, overlaid with teak planking in 1996
- Decks re caulked 2010
- Teak superstructure; coamings, hatches, bulwark capping, gas locker box and dorade boxes

- Single traditional lead keel of approximately 10 tons, bolted on
- Keel hung rudder, new bearings 2007
- Mahogany and rosewood interior joinery with marine ply bulkheads
- Teak cabin soles
- Stainless steel galley, aft and midships head compartments

Specification

DECK LAYOUT, EQUIPMENT, AND GROUND TACKLE

FROM AFT

- Varnished toe rail

- Deck house trunk cabin
- Navigation instruments mounted on deckhouse bulkhead, Raymarine i70 x

- Stainless steel pushpit with opener for rear access when moored stern to
- Stainless steel stanchions in chromed bronze bases (currently removed for racing)
- Stainless steel lifelines running forward with opening gates on each side (currently removed for racing)

#### AFT DECK AND COCKPIT

- Chromed fairleads to port and starboard
- Raw teak and chromed cleats
- Deck prism inboard on each side
- Round lazarette hatch
- Mainsheet horse
- High coaming
- Self draining cockpit with raw grated teak sole
- Seating for helmsman behind wheel
- Wheel to quadrant steering fully refurbished 2010
- Steering compass in binnacle
- Bench seating over lockers to port and starboard
- Engine controls and instruments
- Demountable teak cockpit table
- Teak boom gallows

#### AFT WINCHES

- All Anderson in stainless steel
- 2 x Electric / manual 66 ST genoa/yankee sheet outboard
- On pedestals to the sides of the cockpit locker benches
- 2 x 56 ST spinnaker sheets outboard on pedestals
- 1 x 56 ST main sheet on centreline of bridge deck
- 2 x Stainless steel genoa tracks on bulwark capping and 4 x Lewmar adjustable cars

#### BRIDGE DECK AND FORWARD

- Butterfly skylight over aft cabin
- Dorade vents to each side

4

- 3 x handrails on coach roof - 1 x aft 1 x port 1 x starboard
- Access to deckhouse and below decks to port
- Laurent Giles Highfield levers and backstay tension tackle on each side
- Windows to each side of pilot house and to front and rear

#### MAST AND FITTINGS

- 2 x 2 rope clutches forward
- 2 x 3 Spinlock XX0812 rope clutches port and starboard 2016
- Anderson stainless steel ST winches; main, genoa, staysail, spinnaker halyards

#### ON DECK

- 2 x Anderson 46 ST spinnaker downhauls by mast
- Chromed bronze Lewmar staysail track forward of mast
- Butterfly skylight hatch
- 2 x Dorade vents
- Chocks for holding spinnaker poles to port and starboard
- Gas locker; 2 bottles with switchable valve
- Butterfly skylight hatch
- 2 x Dorade vents
- Fore hatch
- Lofrans Tigres 24 V windlass with 10 mm DIN gypsy 2016, 100 m of chain
- Chrome and raw teak cleats to port and starboard
- Chocks on foredeck to stow hard dinghy or inflatable
- Chocks for holding spinnaker poles to port and starboard
- Stainless steel pulpit
- Stainless steel stem head fitting with cleats and bow roller
- 32 kg CQR anchor and 100 m chain new 2007

### Specification

## ACCOMMODATION AND DOMESTIC EQUIPMENT

#### FROM FT ON DECK

- Very large lazarette
- Generous cockpit with deep lockers below
- Seating to port and starboard and demountable folding table

#### GOING BELOW

- Pilot house, with leather seating on both sides
- Navigation station and chart table aft
- Instruments aft, forward and to port
- Stowage to port and starboard under seats
- Flag storage beneath port seat
- Companionway leads forward and down steps to:

#### Main accommodation

- Head and shower compartment in stainless steel with electric WC to port
- Single midship berth to starboard
- Storage unit comprising 3 cupboards

#### SALOON

- Central table with side leaves opening to seat 8
- Wine stowage under and 3 drawers forward for stowage
- Bench seating to port with infill to provide double berth
- Stowage beneath and behind
- Bench seating to starboard providing single berth

- 2 x Sorenson stainless steel gimbalbed paraffin lamps on fwd bulkhead augment night light

#### STAINLESS STEEL GALLEY

- Butterfly hatch skylight
- GN Espace Levante 3 gimbalbed three burner stove with oven and grill to port
- Stainless steel sink, mixer tap and draining board plus fold down drainer / shelf to port
- Cupboard below sink
- Large keel cooled fridge and keel cooled fridge/freezer to starboard
- 4 x Stainless drawers above worktop over fridges and 2 x cupboards below

#### FOREPEAK

- Berth to port and stowage under in 2 lockers
- Anchor chain locker
- Housing for Bamar furling gear

#### COMING AFT AGAIN THROUGH THE SALOON

- Up into pilot house, steps lead down to
- Companionway / lobby with bench seat and 3 x large cupboards to starboard
- Main electrics panel to starboard
- Doorway aft

- Single bunk berth above, stowage behind bench
- Bookcase to port
- Cupboards with drawers
- Large opening butterfly skylight
- Portholes to port and starboard
- 4 x deck head lights

#### OWNER'S CABIN

- Double berth to port and single berth to starboard
- Butterfly hatch
- Good stowage under and aft in cupboards and drawers
- Large stainless steel en suite with electric WC, shower and cupboards

---

#### Specification

### RIG, SAILS, AND CANVASWORK

#### RIG & SPARS

- Bermuda cutter rig with stainless steel standing rigging
- Twin head / forestay
- New Douglas fir mast by Noble Masts of Bristol 2015
- 2 x Aqualuma LED spreader lights 2015
- Spruce boom new 2008
- 2 x Alloy spinnaker poles stowed on deck
- Twin running backstays on Laurent Giles levers with dyneema runners
- Bamar MEJ 102 electric jib furler controlled from the cockpit and by remote
- Stainless steel mast fittings including 4 reefing points for the mainsail
- Spinlock levers on mast and boom for reefing lines and outhaul

#### SAILS

- Mainsail by Doyles 2008
- Yankee by Doyles 2008 on furler
- Staysail
- Yankee by Hood - hank on
- 150% Genoa by Hood on furler
- Spinnaker in red, white and green

#### CANVASWORK

- Main and staysail covers in beige
- Spray dodger over companionway entrance to pilot house
- Aft deck bimini with zip on side panels
- Foredeck sun cover
- Overall winter cover
- Steering wheel cover
- Hatch covers
- Dorade and winch covers

---

#### Specification

### MECHANICAL, ELECTRICAL, AND TANKAGE

#### MECHANICAL

- Perkins M135 C 135 HP Diesel new 2007 consumes approx. 6L per hour at 7.5 knots
- Borg Warner 1.91:1 gearbox refurbished 2007
- Morse controls new 2009
- Variprop 3 blade feathering propellor, new in 2010
- Fischer Panda P8000 generator

- 2 x Engine start batteries new 2010

- 1 x Generator battery new 2010
- 2 x Electric automatic bilge pumps with sensors in main and engine bilge
- 1 x Manual Whale in cockpit for main bilge
- 1 x Scavenger pump engine driven

#### ELECTRICAL

- BEP Marine DC motor monitoring bilges
- Victron Phoenix control panel 2016 (in aft corridor)
- Victron Phoenix 24 / 3000 / 70 Charger & Inverter new 2016
- Victron 12V Charger new 2016
- 8 x Numax 135 domestic batteries new 2010

#### TANKAGE

- Fuel 120 gallon / 545 Litre in 2 stainless steel tanks
- Water 140 gallon / 636 Litre in 3 stainless steel tanks
- Grey water tank with electric pump
- Black water tank with electric pump (currently in store)

---

#### Specification

### NAVIGATION AND COMMUNICATIONS

#### NAVIGATION

- Raymarine ST6001 autopilot at helm
- Raymarine 4 x i70 displays 2015
- Raymarine c125 MFD chart plotter 2015
- Raymarine Digital HD radome 2015

- Windvane

#### COMMUNICATIONS

- Icom ICM 601 VHF radio
- Aerial for sat phone (in store)

---

#### Specification

### SAFETY

- EPIRB
- Ocean Safety 6V ISO 9650 six person life raft in valise 2015

- Danbuoy
  - 2 x Horseshoe life rings
  - Emergency Tiller
-



Specification

DINGHY

- Fully restored clinker built dinghy

and varnished deck mountings

---

Specification

OTHER EQUIPMENT

- Teak passarelle for access

ashore when moored stern-to

---

Specification

IMAGE CREDIT

- #2 & #3: Mike Wynne-Powell

Jonty Sherwill/ Hamble Classics

- #5:

---

Disclaimer

These particulars have been prepared from information provided by the vendors and are intended as a general guide. The purchaser should confirm details of concern to them by survey or engineers inspection. The purchaser should also ensure that the purchase contract properly reflects their concerns and specifies details on which they wish to rely.

---

LAURENT GILES/ BELTRAMI 60 FT BERMUDAN CUTTER 1956

Specification  
GALLERY



















  
**SANDEMAN**  
BOOKINGS OF CLASSIC & VINTAGE YACHTS  
YACHT COMPANY





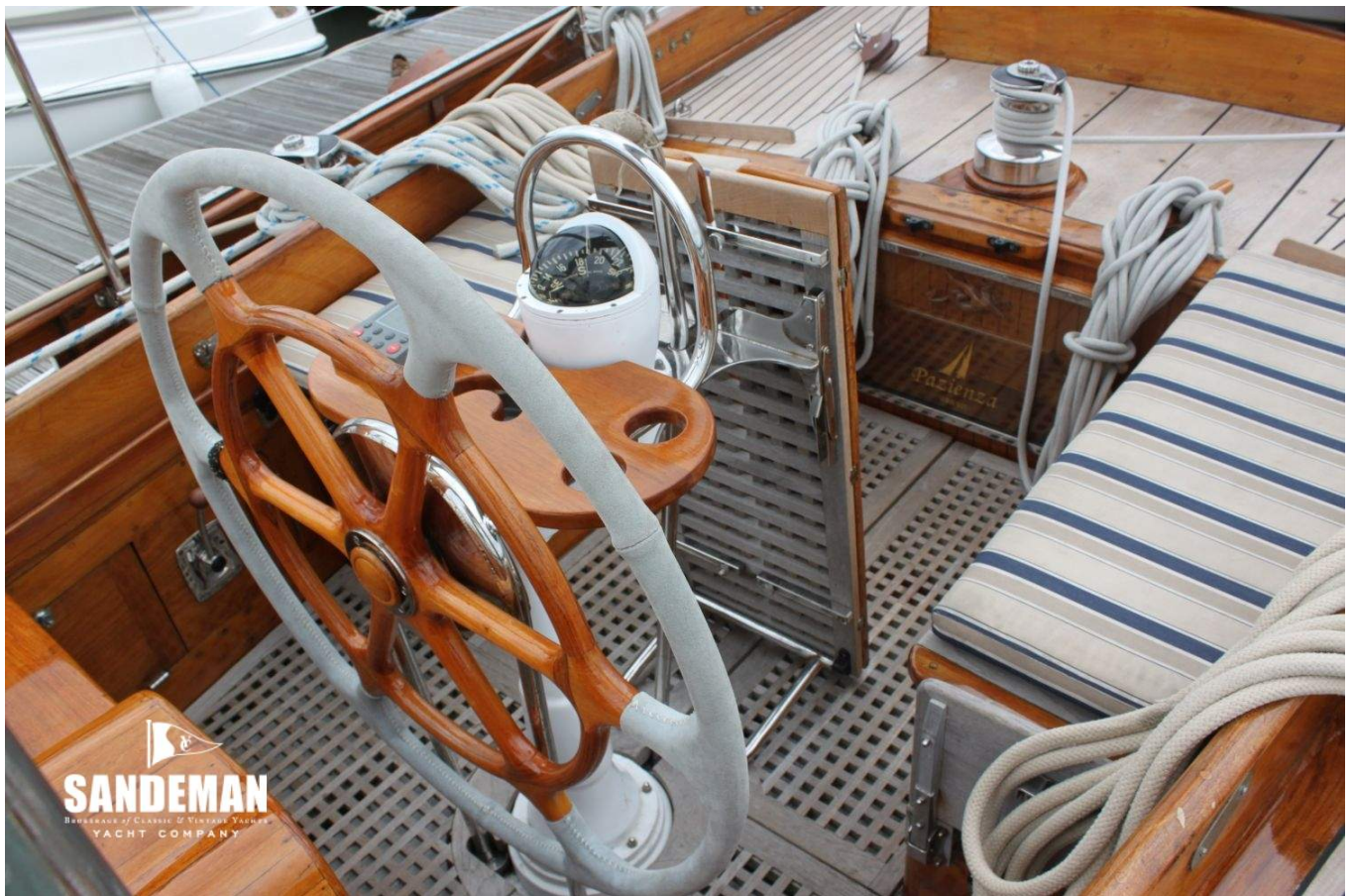


















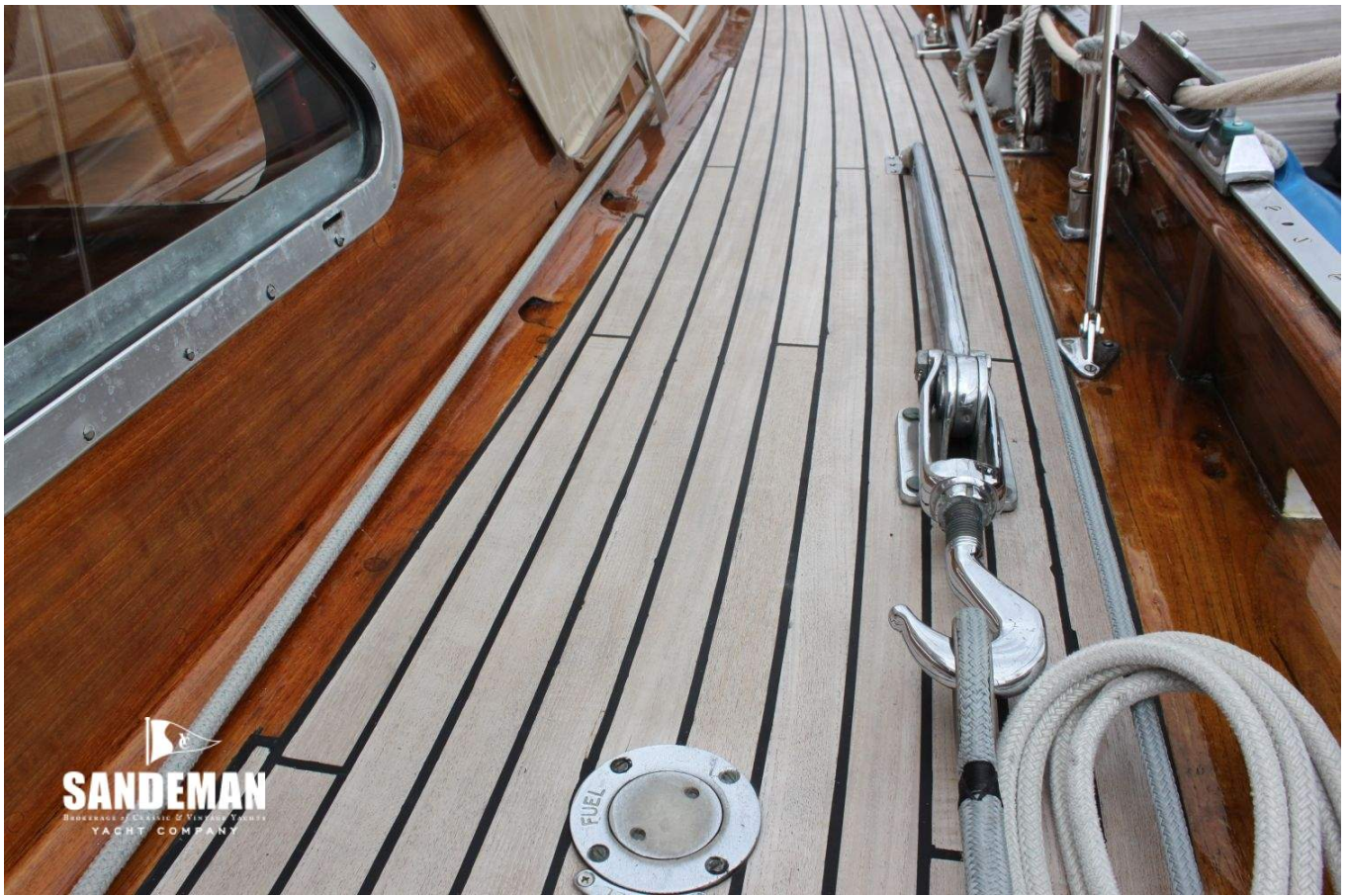


  
**SANDEMAN**  
BOOKERS OF CLASSIC & VINTAGE YACHTS  
YACHT COMPANY



  
**SANDEMAN**  
BOOKERS OF CLASSIC & VINTAGE YACHTS  
YACHT COMPANY









  
**SANDEMAN**  
BOATLAND OF CLASSIC & VINTAGE YACHTS  
YACHT COMPANY



  
**SANDEMAN**  
BOARDSHIP OF CLASSIC & VINTAGE YACHTS  
YACHT COMPANY





  
**SANDEMAN**  
BOATWORKS OF COASTAL & OFFSHORE TRADING  
YACHT COMPANY







  
**SANDEMAN**  
BOATERS ALL OF CLASSIC & VINTAGE BOATS  
YACHT COMPANY







  
**SANDEMAN**  
HARBORERS OF QUALITY & CUSTOM YACHTS  
YACHT COMPANY









  
**SANDEMAN**  
BORDERLAND OF CLASSIC & VINTAGE YACHTS  
YACHT COMPANY



  
**SANDEMAN**  
BORDERLAND OF CLASSIC & VINTAGE YACHTS  
YACHT COMPANY





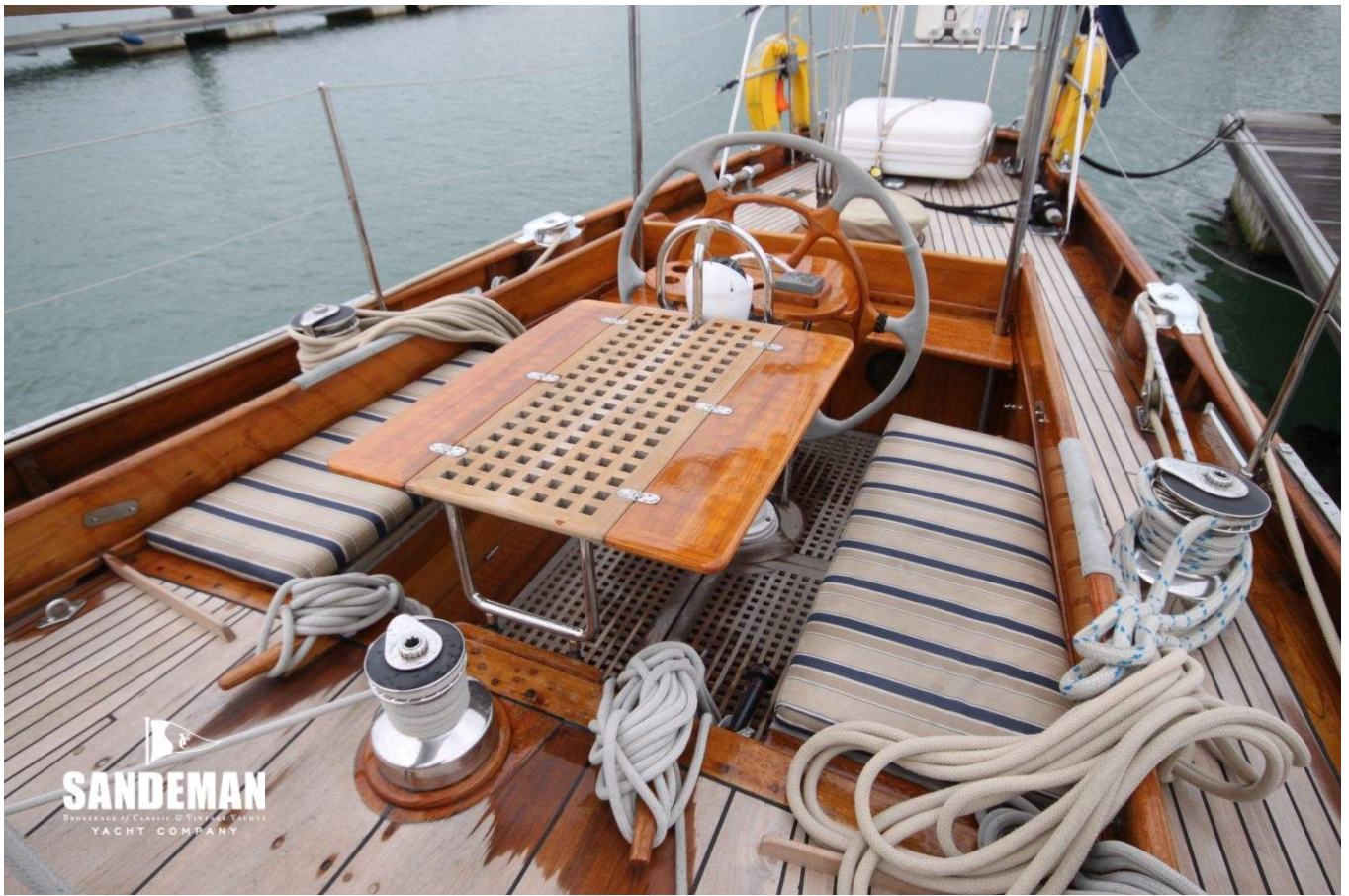




























  
**SANDEMAN**  
DEALER OF CLASSIC & VINTAGE YACHTS  
YACHT COMPANY

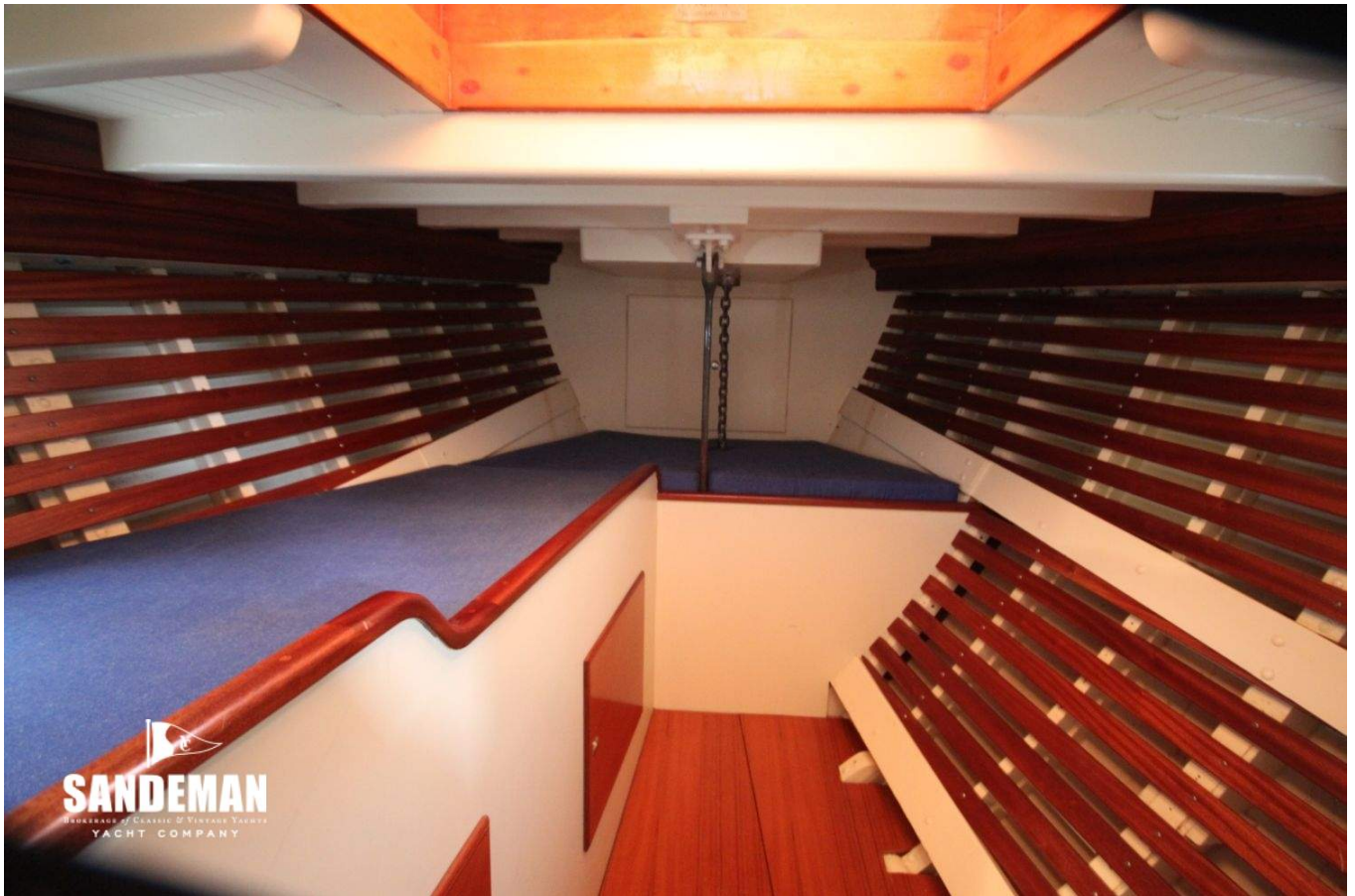


  
**SANDEMAN**  
BRIDGE OF CLASSIC & VINTAGE YACHTS  
YACHT COMPANY





























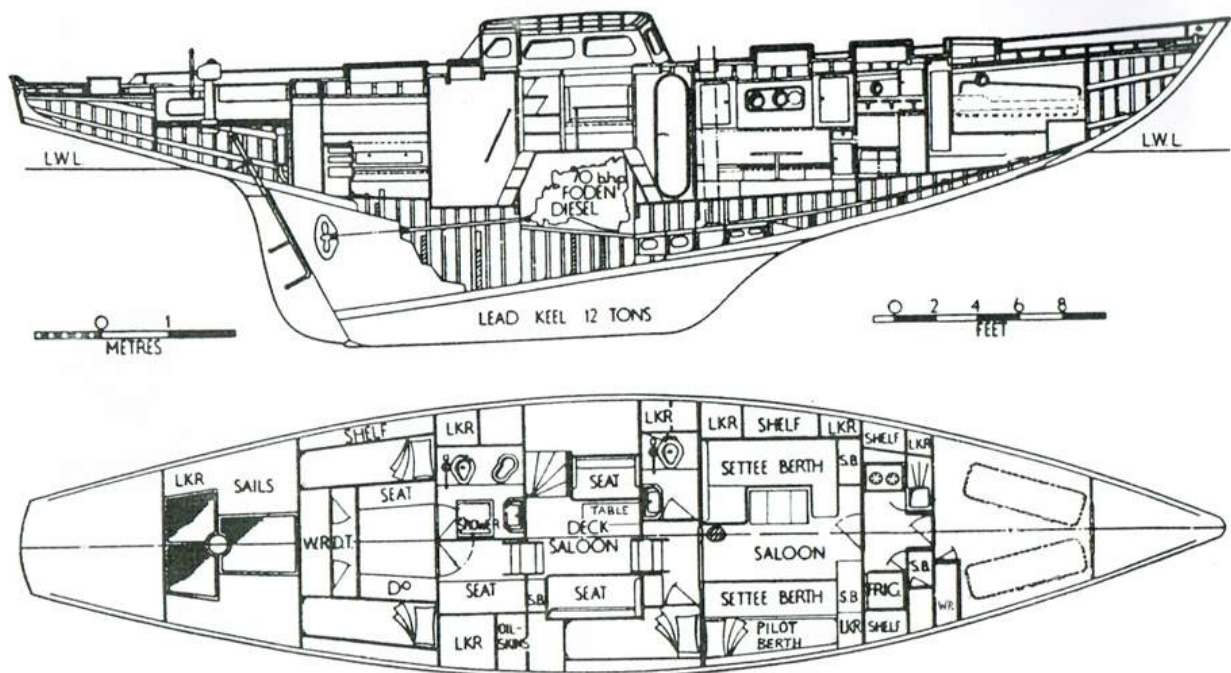












**PAZIENZA**





  
**SANDEMAN**  
DEALER OF CLASSIC & VINTAGE YACHTS  
YACHT COMPANY

