

JOHN BAIN ORMIDALE TSDY 1959 - SOLD



Specification

SEA CREST

JOHN BAIN ORMIDALE TSDY 1959

Designer	John Bain	Length waterline	0 ft 0 in / 0 m	Engine	2 x Gardner 94 HP Diesel
Builder	J.N. Miller & Sons, St. Monans, Fife	Beam	14 ft 7 in / 4.44 m	Location	Italy
Date	1959	Draft	5 ft 3 in / 1.6 m	Price	Sold
Length overall	58 ft 11 in / 17.95 m	Displacement	30 Tonnes		
Length deck	58 ft 11 in / 17.95 m	Construction	Teak		

These details are provisional and may be amended

Specification

BROKER'S COMMENTS

One of the best known and sought after classes of motor yachts designed by John Bain; the first of her type was winner of the 1948 second post-war, Pavilion D\or Boat race. SEA CREST was built by JN Miller & Sons. Purchased by her current Italian owners over ten years ago and sailed from Scotland to the Mediterranean, she has undergone an important refit at the fabled classic yacht yard Cantieri del Argentario, making her structurally sound while also maintaining – indeed enhancing her charm in understated good taste. A fully seaworthy family boat ideal for extended cruising, this classic motor yacht has moreover been very well maintained by her current owner – SEA CREST has to be a match for any villa by the sea !



• SANDEMAN YACHT COMPANY •
• Brokerage Of Classic & Vintage
Yachts •

www.sandemanyachtcompany.co.uk

JOHN BAIN ORMIDALE TSDY 1959

Specification
CONSTRUCTION

- Teak hull painted white and superstructure
 - Teak & mahogany deck
-

Specification
ACCOMMODATION AND DOMESTIC EQUIPMENT

- Chart table and stowage
 - Accommodation for 7 in 3 double cabins
 - 3 head / bathrooms all with electric WC, 2 with showers and 1 with bath
 - Access by companionway steps forward to saloon, galley and fore cabin suite
 - Mahogany interior finish
 - Large saloon seating for 7
 - Elegant blue velour settee cushions and table
 - Side boards and lockers
 - Steps down forward
 - Galley with 3 burner gas hob with gas oven and grill
 - 75 litre fridge 2001
 - 36 litre freezer 2003
 - Stainless steel double sink
 - Doorway to fore cabin and forward head
 - From Deckhouse steps down to aft corridor
 - Utility with washing machine and facility controls
 - Twin berth guest cabin port side
 - Heads and bath room starboard
 - Owners double suite aft
 - Pressurised hot water system
 - Caloriferi 220 V heating in aft cabins
 - Idromar NC2J 135 Litre per hour water maker 2002
-

Specification
DECK EQUIPMENT AND GROUND TACKLE

- 1 x 110kg Flagship type anchor
 - 1 x 60 kg Core Delta anchor
 - 110 m x 22 mm chain
 - Orvea Model 720 24 V 3,500 W windlass reconditioned 2008
 - Orvea Model 731 24 V 700 W warping winch reconditioned 2006
 - Original wooden dinghy
 - Aft deck sun awning
 - 3 m Teak passarelle
 - Deck shower
 - Complete winter covers
 - Deck chairs
 - On deck barbecue
-

Specification
MECHANICAL, ELECTRICAL AND TANKAGE

- 2 x Gardner 6 LW / 94 HP sea water cooled Diesel engines and gearbox 1959
 - New injectors, valve seats & cylinder head in 2002
 - Annually serviced
 - 3 bladed bronze propeller
 - c 1,350 n miles range
 - Cruising speed 9 knots at 1,250 rpm
 - Consumption 11 Litre per hour
 - 8 x 240 A 6 V service batteries 2008
 - 4 x 100 A 12 V starter batteries 2008
 - 1 x 100 A 12 V generator battery 2006
 - 2 x 100 A 12 V warping winch batteries 2006
 - Shore power
 - Master volt 50 A battery charger 2008
 - Inverter 2001
 - Kohler 9EFOZ 7.4 KW Generator 2004
 - Nav lights Deck lights
 - 3,300 litres / 726 gallons fuel in 3 tanks
 - 1,100 litres / 242 gallons Fresh water in 4 tanks
-

Specification
NAVIGATION COMMUNICATIONS AND ELECTRONICS

- Compass
 - Furuno depth sounder 2004
 - Speed
 - Neco original autopilot:
 - Furuno GPS+ plotter+ c-maps Carte Mediterraneo 2004
 - VHF Sailor
 - Furuno Mark 2 radar 1998
 - Barometer
 - Clock
-

SAFETY

- 8 person life raft
 - 8 x Life jackets
 - 1 Lifebuoy complete with signal light
 - 5 x Electric bilge pumps
 - 6 x Fire extinguisher
 - 1 x Fire blanket
-

Specification

REFIT

Over the years 2001 to 2006 an important refit was carried out by Cantiere Argentario of Porto Santo Stefano in Italy respecting the origins and character of the boat. Details of the refit, documents and pictures are available. The galley and forward cabin were refurbished in 2009.

Disclaimer

These particulars have been prepared from information provided by the vendors and are intended as a general guide. The purchaser should confirm details of concern to them by survey or engineers inspection. The purchaser should also ensure that the purchase contract properly reflects their concerns and specifies details on which they wish to rely.

JOHN BAIN ORMIDALE TSDY 1959

Specification
GALLERY







SANDEMAN
BANKERS OF CLASSIC & MODERN YACHTS
YACHT COMPANY




SANDEMAN
SPECIALISTS IN THE CARE & RESTORATION OF CLASSIC YACHTS
YACHT COMPANY












SANDEMAN
HANDMADE AND CUSTOMER SERVICE YACHTS
YACHT COMPANY




SANDEMAN
BOATWORKS OF CLASSIC & YACHTING YACHTS
YACHT COMPANY




SANDEMAN
BOATWORKS OF CLASSIC & YACHTING YACHTS
YACHT COMPANY





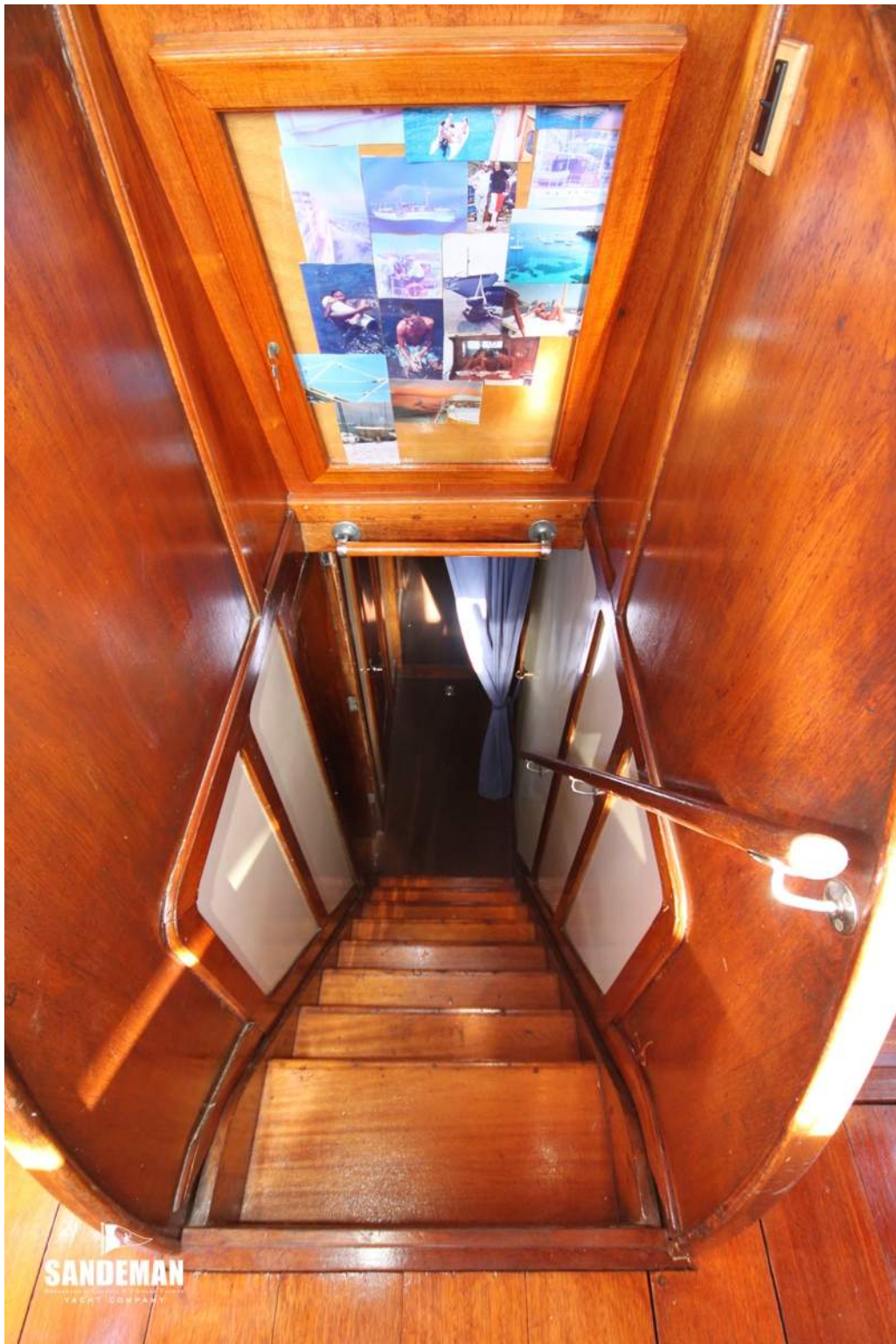






SANDEMAN
SANDERSON OF CANADA & YACHTS YACHTS
YACHT COMPANY



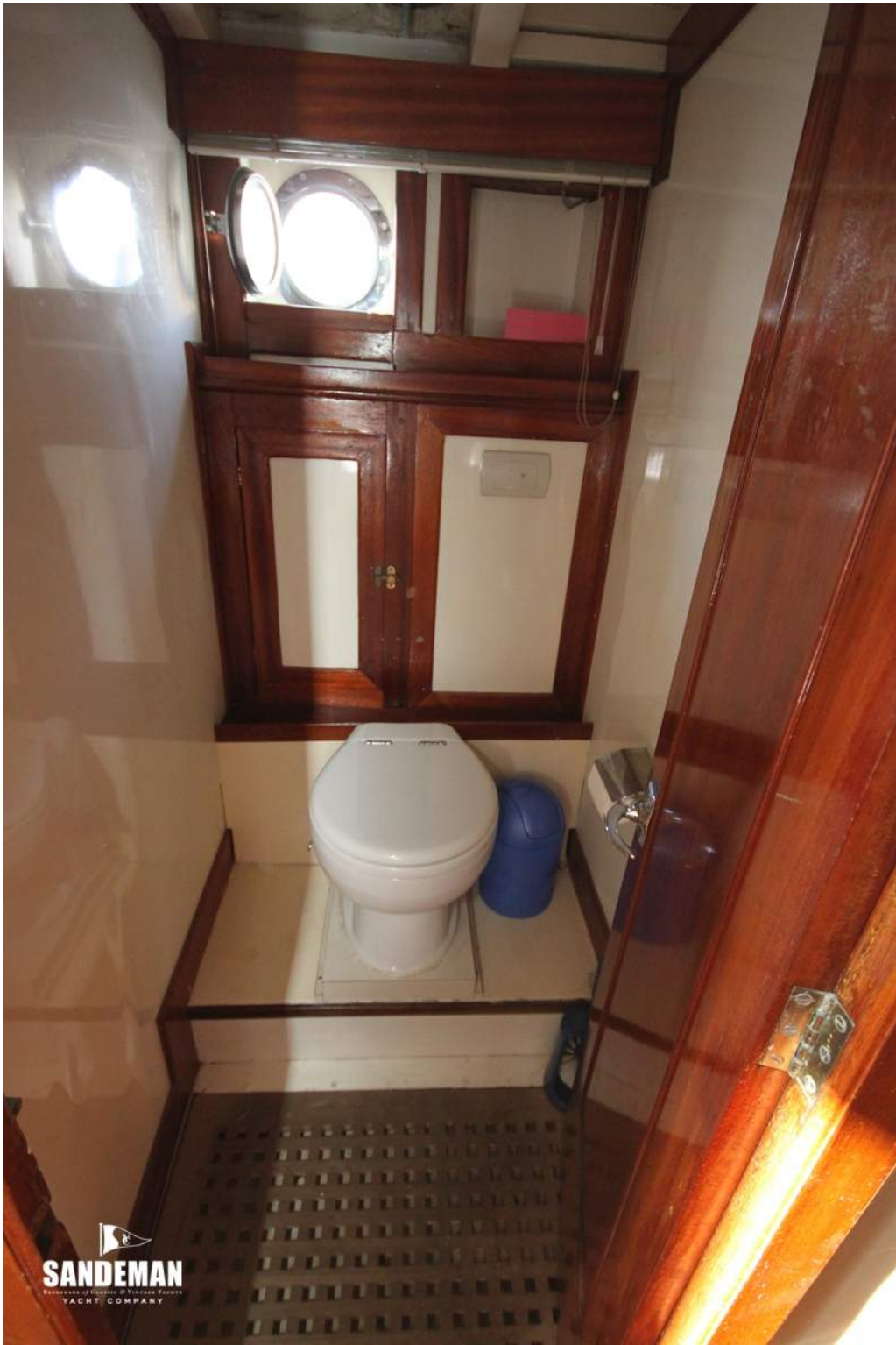


SANDEMAN
YACHT COMPANY






SANDEMAN
BOUTIQUE OF CLASSIC & VINTAGE YACHTS
YACHT COMPANY




SANDEMAN
SPECIALISTS OF CLASSIC & MODERN YACHTS
YACHT COMPANY






SANDEMAN
DEALER OF CLASSIC & VINTAGE YACHTS
YACHT COMPANY




SANDEMAN
BOUTIQUE OF CLASSIC & VINTAGE YACHTS
YACHT COMPANY



